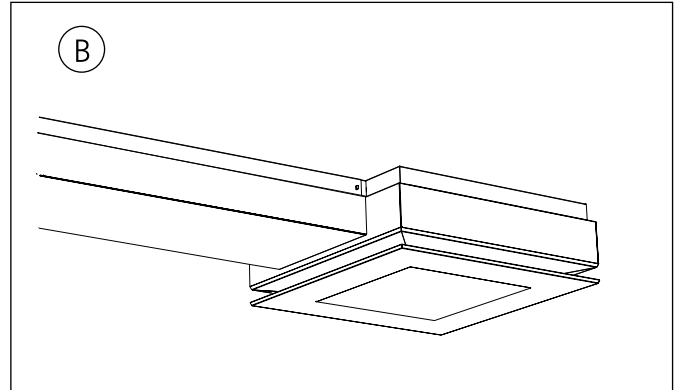
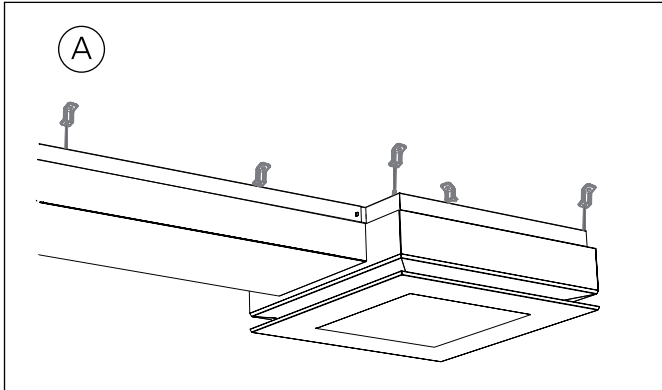


PARASOL EX b

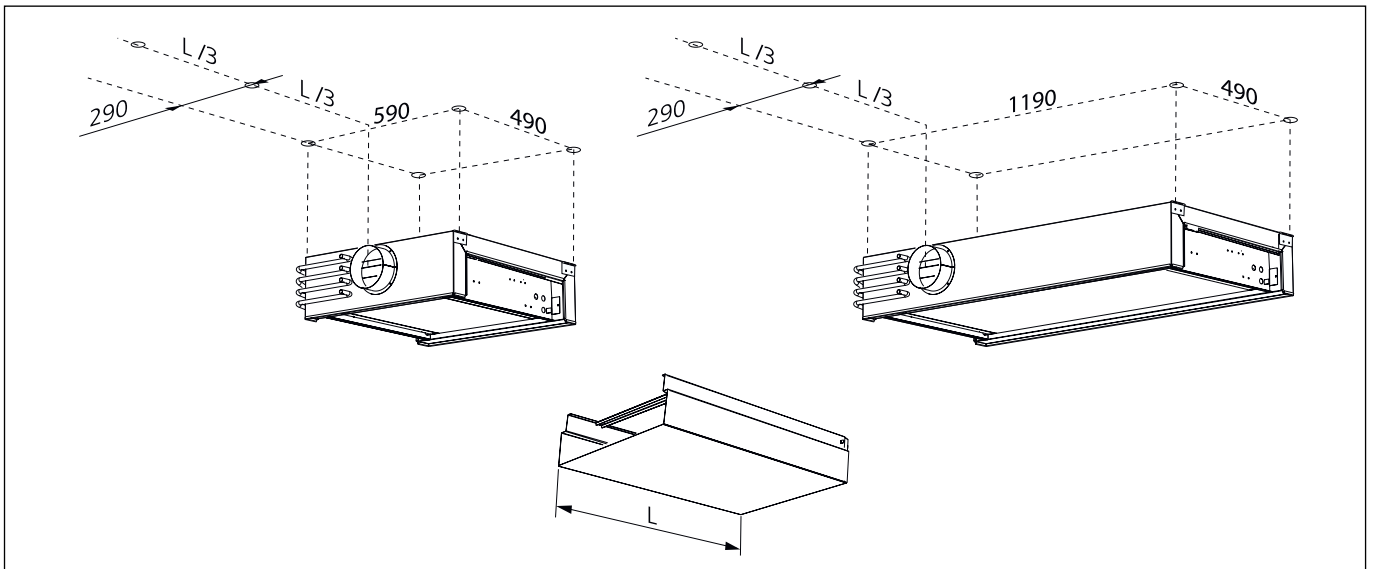
Installation - Commissioning - Maintenance

20110411

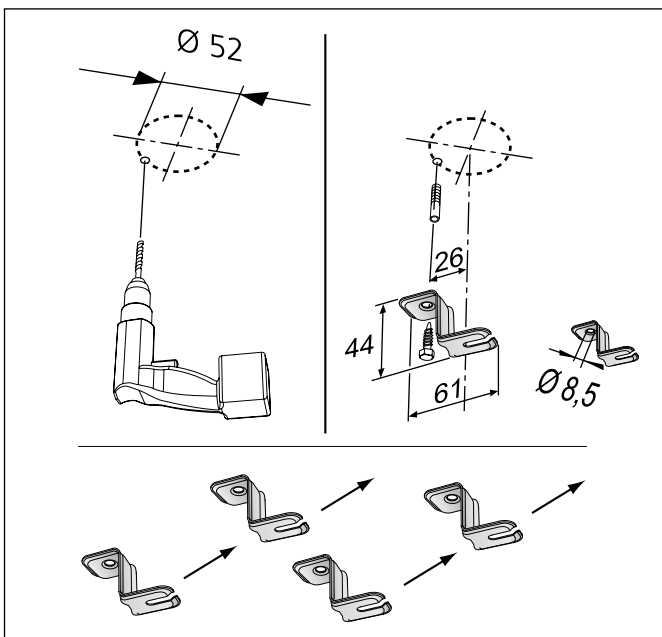
PARASOL EX b - m



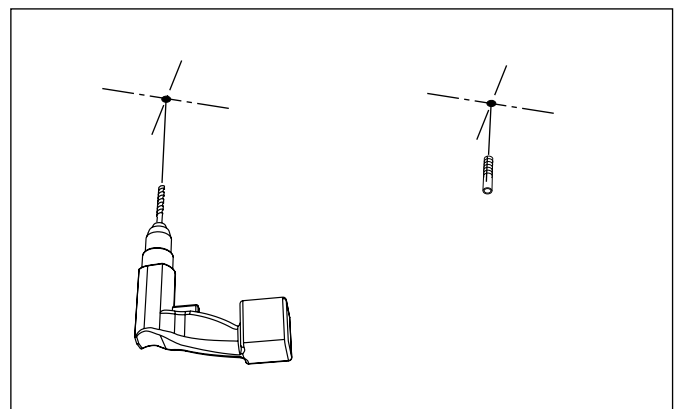
A1, B1



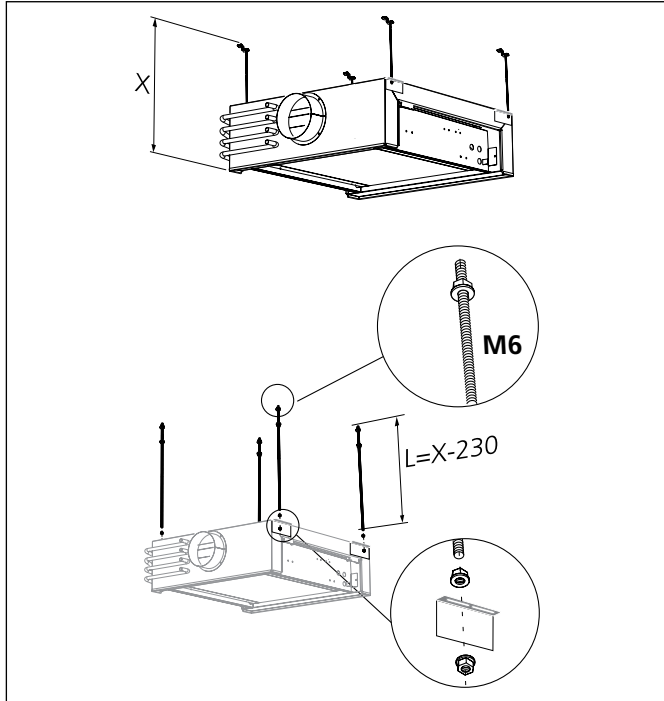
A2



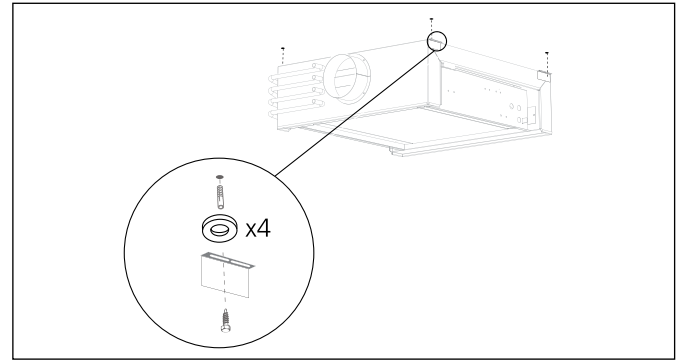
B2



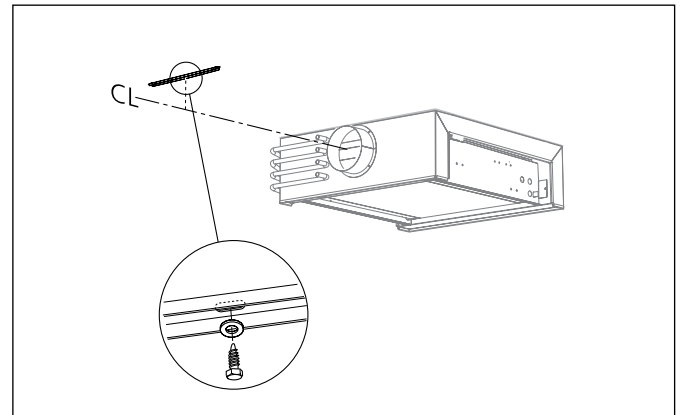
A3



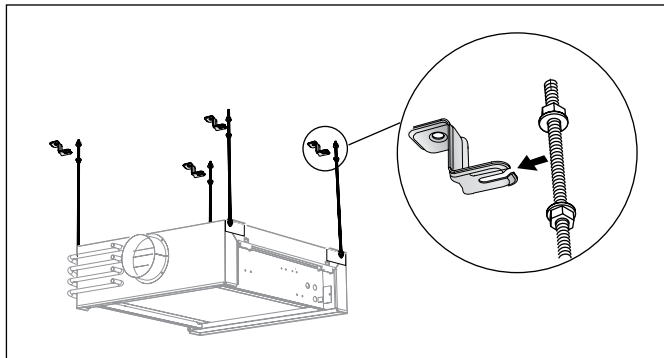
B3



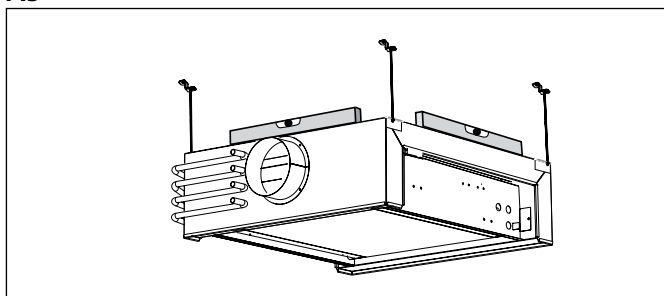
B4



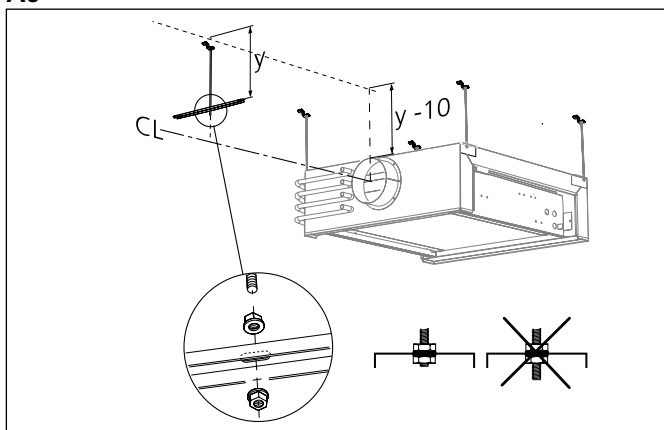
A4



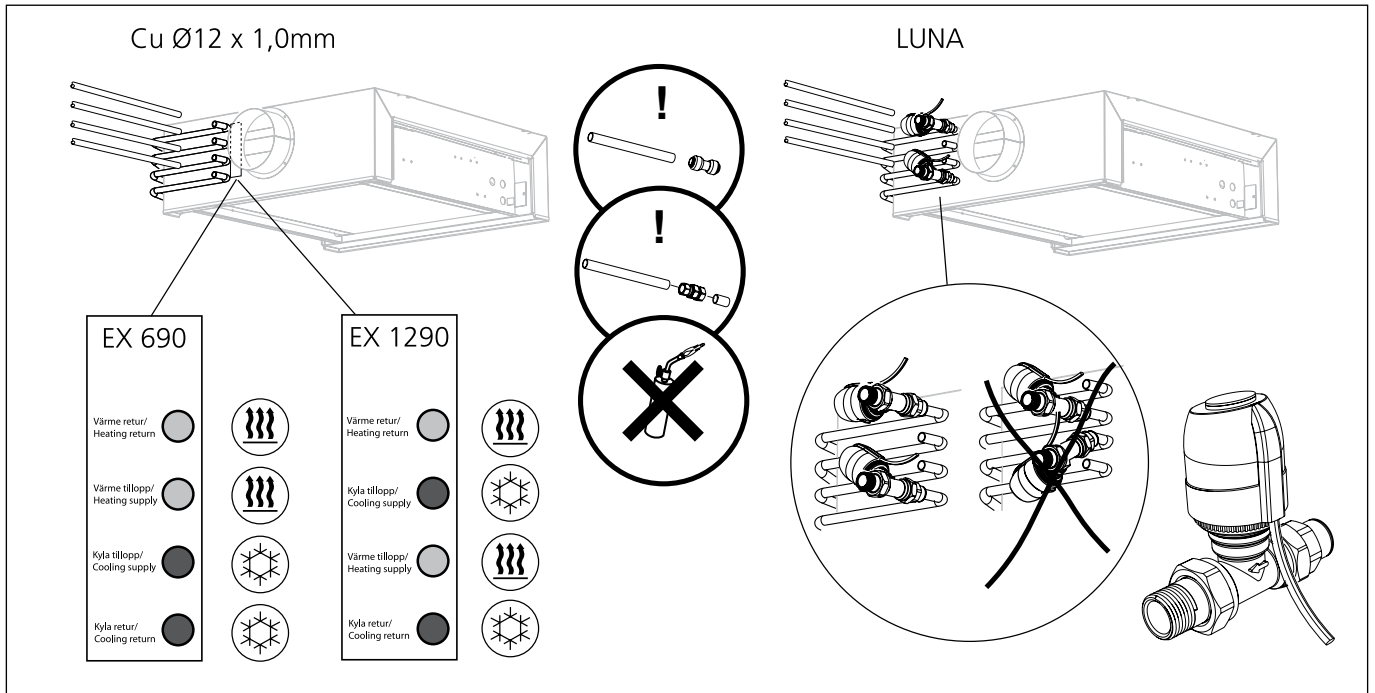
A5



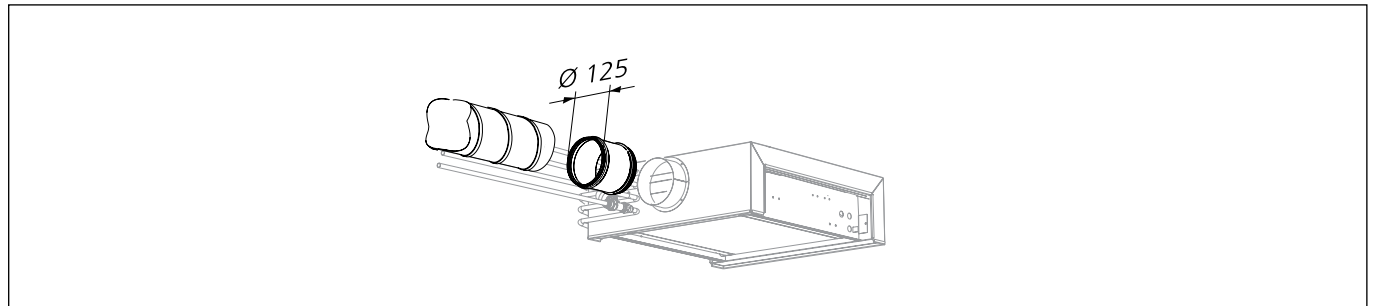
A6



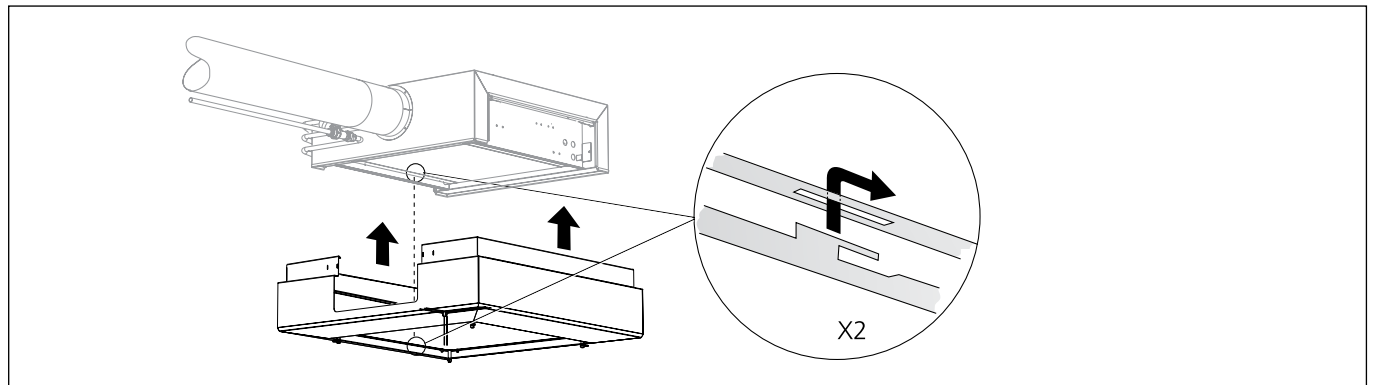
A7, B5



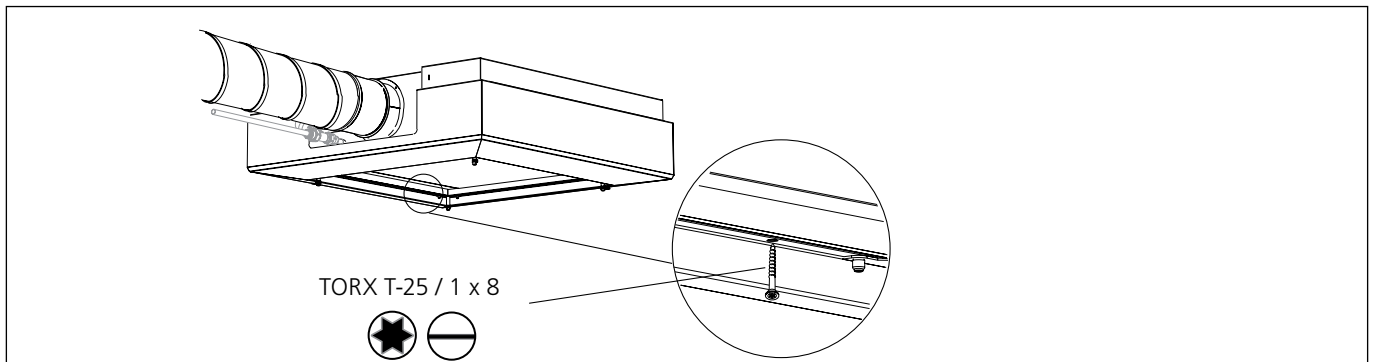
A8, B6



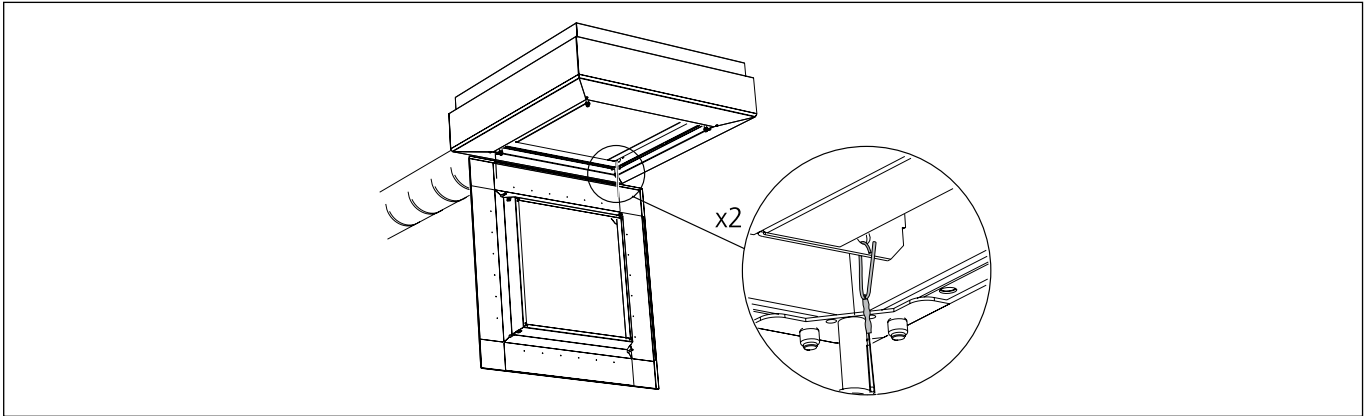
A9, B7



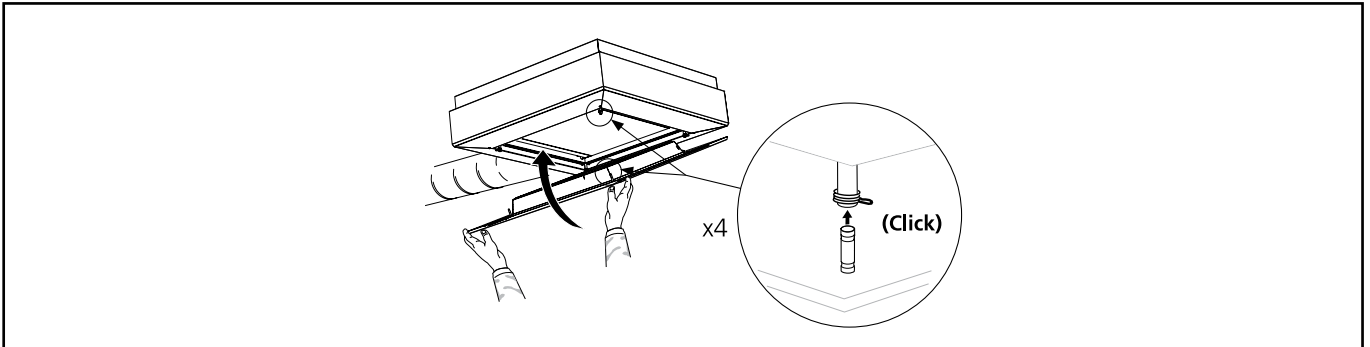
A10, B8



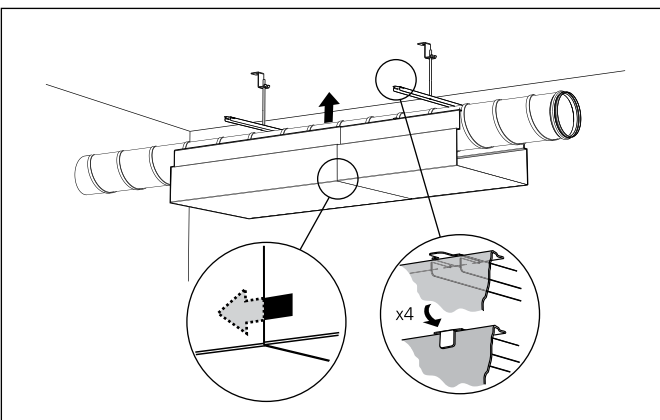
A11, B9



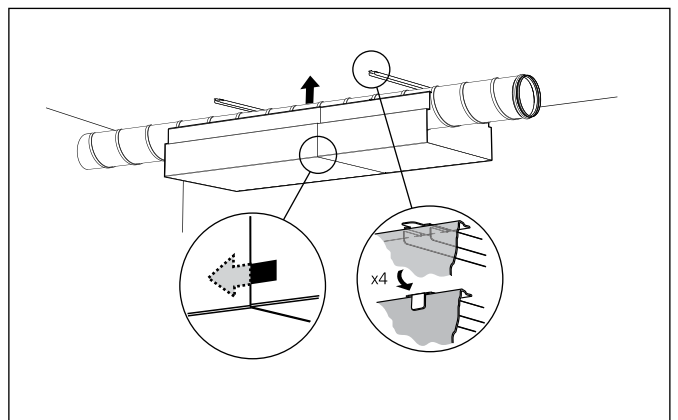
A12, B10



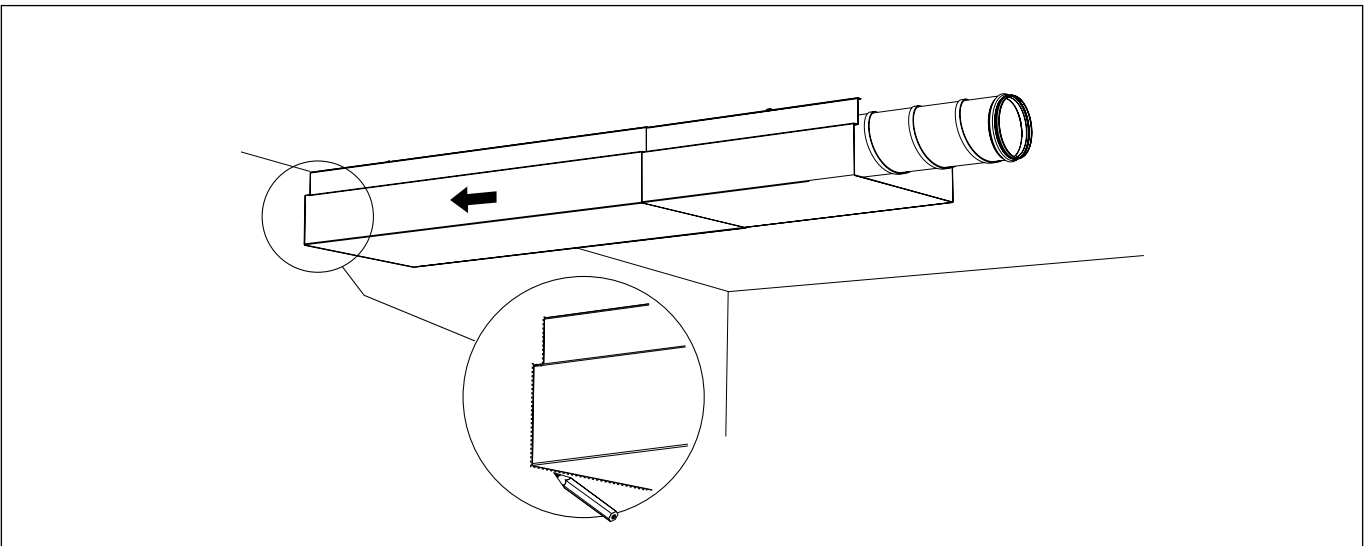
A13



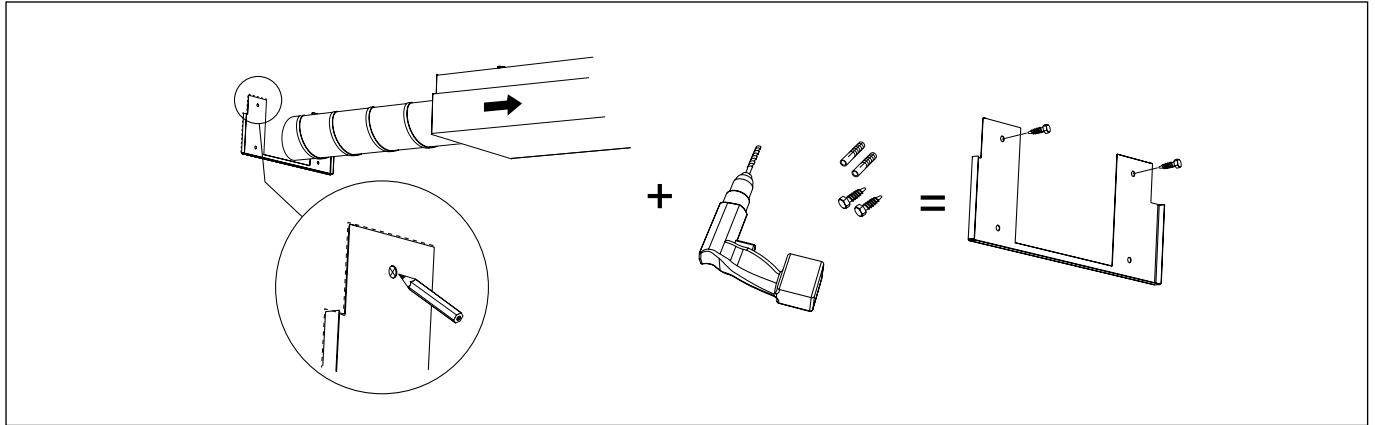
B11



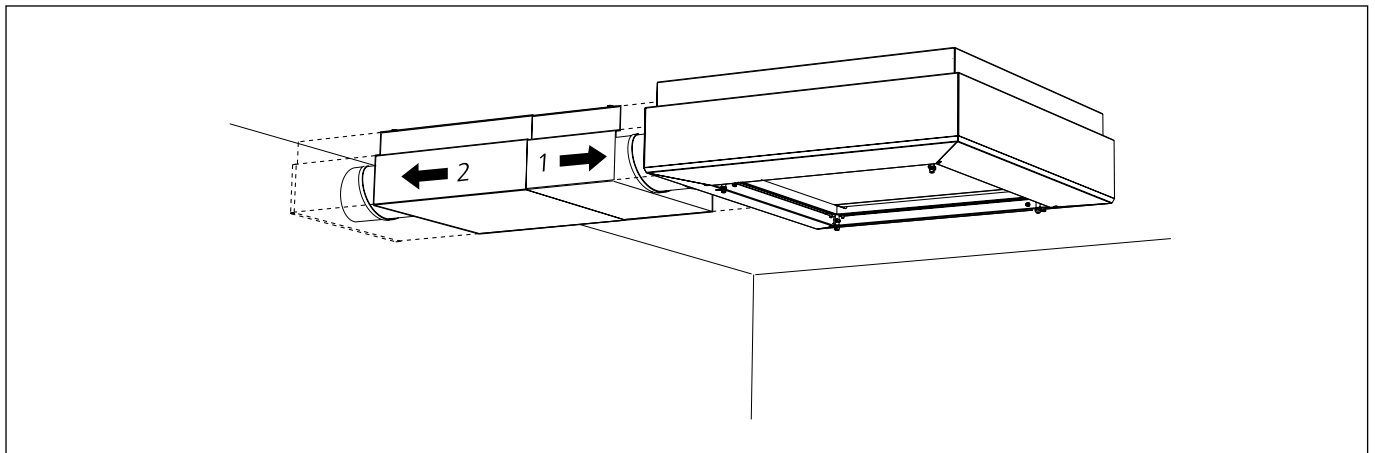
A14, B12



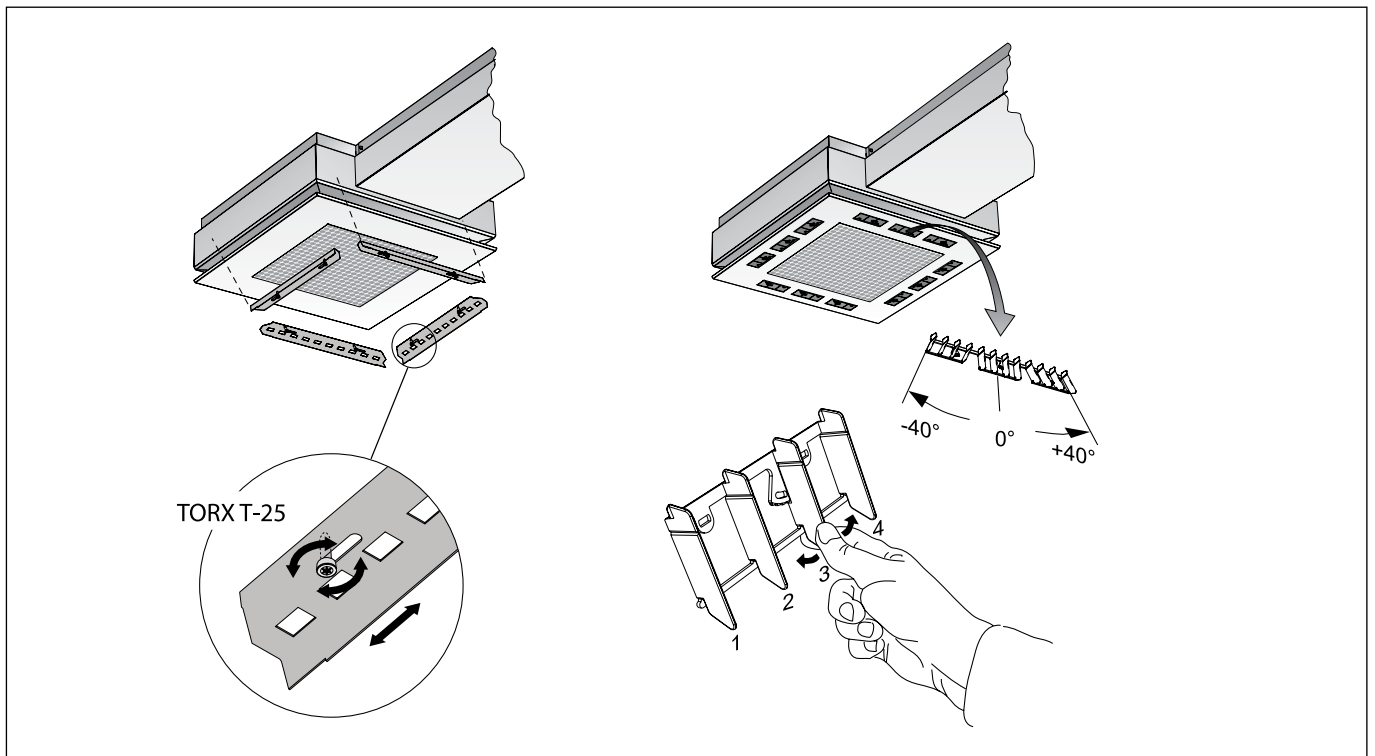
A15, B13



A16, B14



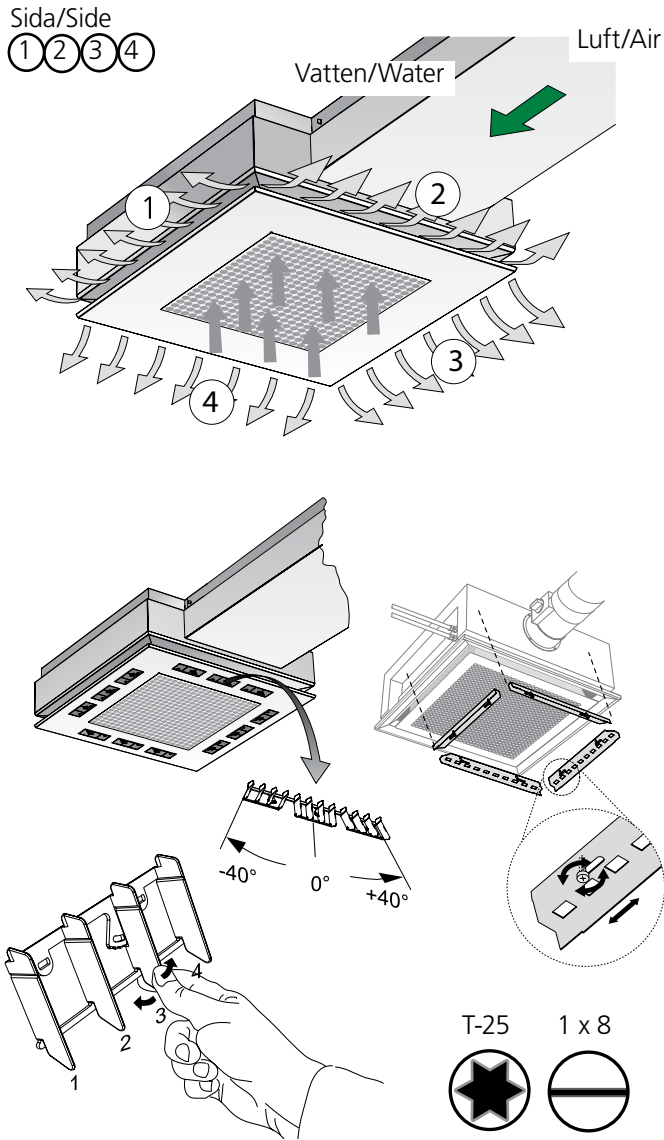
A17, B15



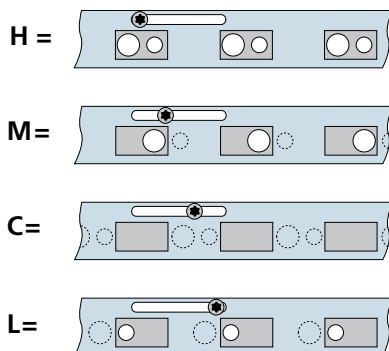
PARASOL EX b

Installation - Commissioning - Maintenance

20110411



Dyskonfiguration
Nozzle configuration
H → M → C → L



$$p_i = \left(\frac{q}{k}\right)^2 \text{ [Pa]}$$

$$q = k \cdot \sqrt{p_i} \text{ [l/s]}$$

[p_i Pa]
 q [l/s]
 k = k-faktor/-factor

PARASOL EX b 690 MF Enmodulsenhet/ Single-module unit			
Modell/Type	Dysa/Nozzle	Sida/Side	k-faktor/-factor
MF	L	-	0,253
MF	M	-	0,440
MF	H	-	0,693
MF	C	-	0,000

PARASOL EX b 1290 MF Tvåmodulsenhet/ Double-module unit			
Modell/Type	Dysa/Nozzle	Sida/Side	k-faktor/-factor
MF	L	1&3 kort/short	0,176
MF	L	2&4 lång/long	0,464
MF	M	1&3 kort/short	0,253
MF	M	2&4 lång/long	0,667
MF	H	1&3 kort/short	0,429
MF	H	2&4 lång/long	1,131
MF	C	1, 2, 3, 4	0,000

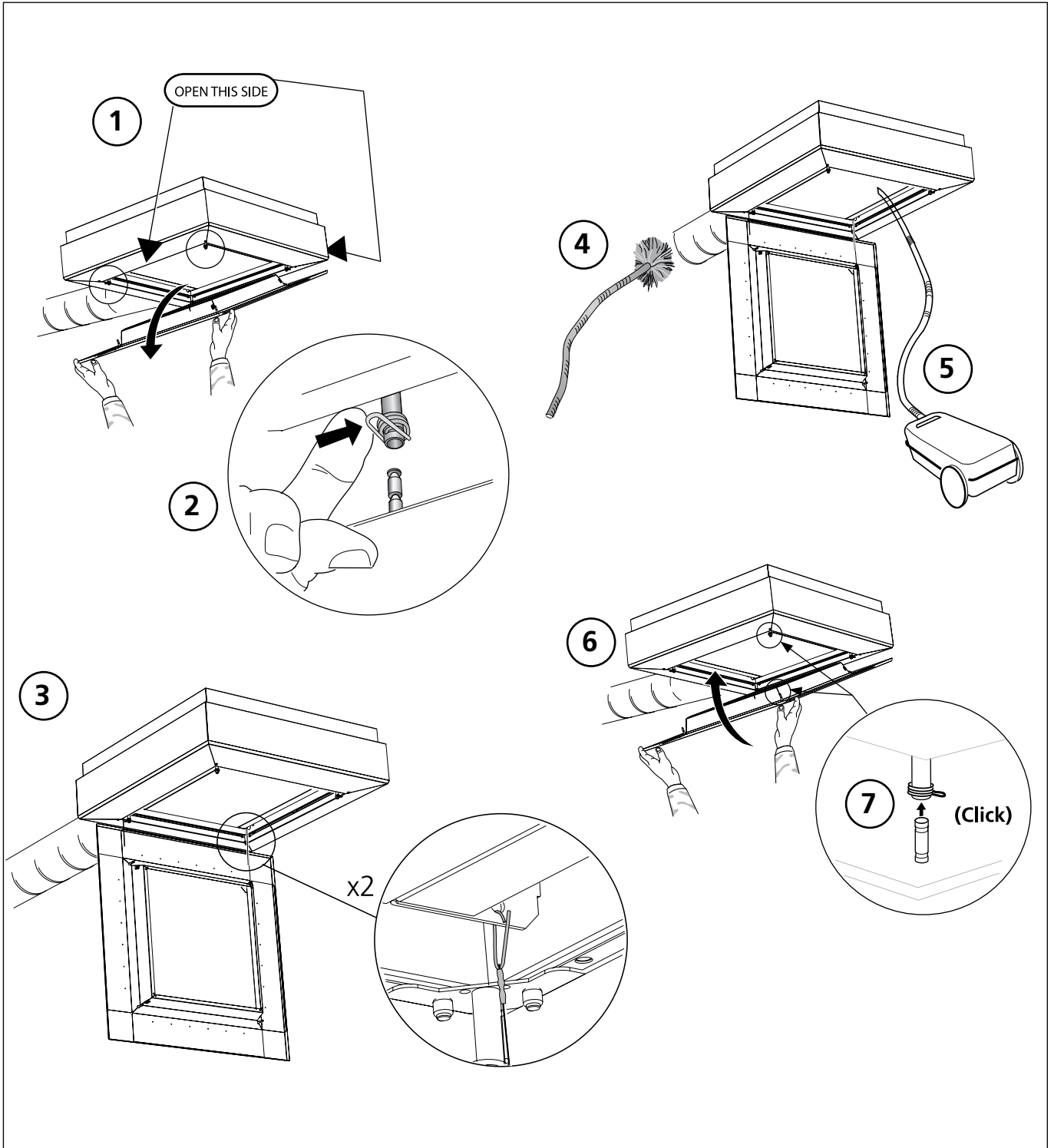
PARASOL EX b 1290 HF Tvåmodulsenhet/ Double-module unit			
Modell/Type	Dysa/Nozzle	Sida/Side	k-faktor/-factor
HF	L	1&3 kort/short	0,253
HF	L	2&4 lång/long	0,667
HF	M	1&3 kort/short	0,440
HF	M	2&4 lång/long	1,160
HF	H	1&3 kort/short	0,693
HF	H	2&4 lång/long	1,827
HF	C	1, 2, 3, 4	0,000

Exempel, produktkod/ Example Product Code: PARASOL EX b 1290-A-HF-HLMH		
Sida/Side 1 = H		k=0,693
Sida/Side 2 = L		k=0,667
Sida/Side 3 = M		k=0,440
Sida/Side 4 = H		k=1,827
k-faktor/-factor HLMH = 0,693+0,667+0,440+1,827= 3,63		

PARASOL EX b

Installation - Commissioning - Maintenance

20110411



PARASOL EX b - m