

# INSTALLATION

## GOLDen GATE Trend, TBLZ-1/2/3-1-4-41

### 1. General

#### Communication unit TBLZ-3-1-4-41

Intended for use together with Version C/D GOLD air handling units.

#### Communication unit TBLZ-2-1-4-41

Intended for use together with Version B GOLD air handling units.

#### Communication unit TBLZ-1-1-4-41

Intended for use together with Version 4/A GOLD air handling units.

The communication unit consists of the following:

1. 4-module standard enclosure for a DIN rail assembly sealed to IP20.
2. 9-pin D-subconnector for connection via serial cable to a computer for configuration or to a Trend IQ supervisor port.
3. Terminal for 10-30 V AC/DC, 25 mA for a 24V power supply.
4. Connection terminals for the EIA 485 Network. (Used by Version C/D).
5. Switch for termination of the EIA 485 Network.
6. Connection RJ-12 for connection to GOLD in operation. (Used by Version 4/A/B).
7. Switches for future usage.
8. Switches for selection operating/configuration mode.

#### Light-emitting diodes:

Module status.

Network LED.

GOLD Comm. LED.



### 2. Safety instructions

Be careful when you connect wiring to the communication unit. Never carry out work while the power supply is switched on. Doing so may cause personal injury and damage the unit. Pay careful attention to local safety regulations when you install the unit.

### 3. Installation

#### 3.1 General

Position the communication unit on the DIN rail as described below:

##### Version C/D

Next to the GOLD unit's control circuit card or in an optional enclosure.

##### Version B

Next to the GOLD unit's junction (wiring) hood

##### Version 4/A

On top of the air handling unit, by the quick connectors and cable glands

Connect the V in+ (1) and Vin- (2) terminals, see Fig. 1, of the GOLDen GATE unit to a separate network component with the correct capacity or to the GOLD unit's 24V AC terminals depending on the model as described below:

##### Version C/D

G=58 or 60, G0=59 or 61, see Fig. 4.

##### Version B

G=104, G0=103 (can also be connected to 12 V DC G=57, G0=58).

##### Version 4/A

G=9, G0=7.

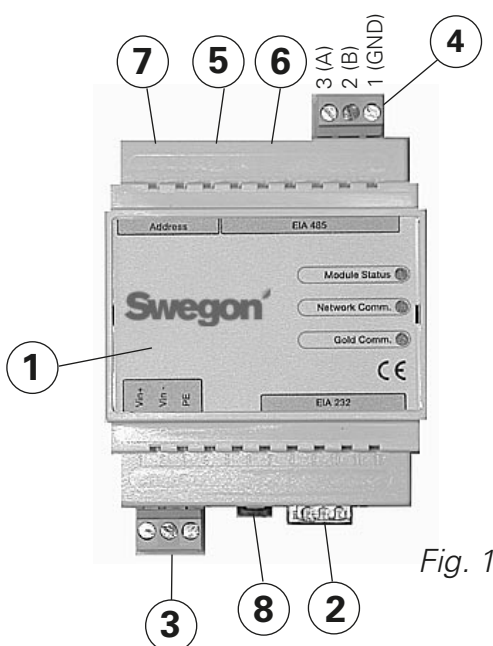


Fig. 1

### 3.2 Configuring

Use the "GOLDen GATE Config" configuration program to configure the unit.

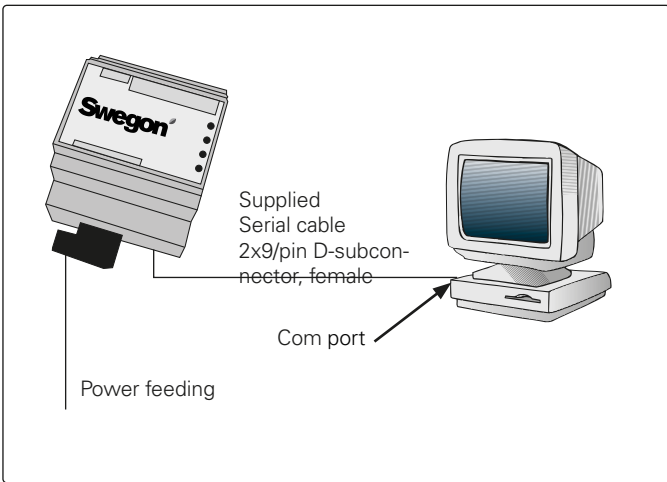
You'll find the program at our home page. Address: <http://www.swegon.com>, under Software. Follow the instructions in the Setup window to install the program.

A computer with Windows 98 or better is required, as well as a RS-232 serial port. Use the serial cable with double D-sub female connectors supplied with the unit. Start the configuration program and select Golden Gate Serial EIA485. See Fig. 2.

Set any of switches 8 (see Fig. 1) in the ON position while configuring. The switch must be in the ON position before termination of the 24 V supply.

Select Com port, Trend protocol, language, LAN and node addresses, unit name, if available, and the speed of communication (see Fig. 3).

The unit should be without power for 30 seconds before settings are applicable after the configuring is finished and all parameters are saved. Reset all switches back to 8 (see Fig. 1) in the OFF position.



Get Config=Current setting and program version in the communication unit.

Set Config=Transfers the settings in the configuration program to the communication unit and, if needed, upgrades the software.

Upgrade FW=Downloads the new program for the version desired in the communication unit. Open the program desired.

You'll find it in the "GOLDen GATE Config" folder installed.

Open the relevant file; it will be installed in the connected unit.

Fig. 2

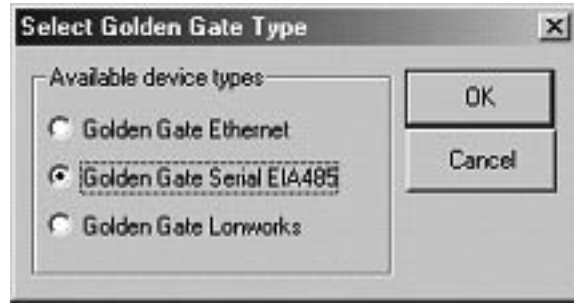
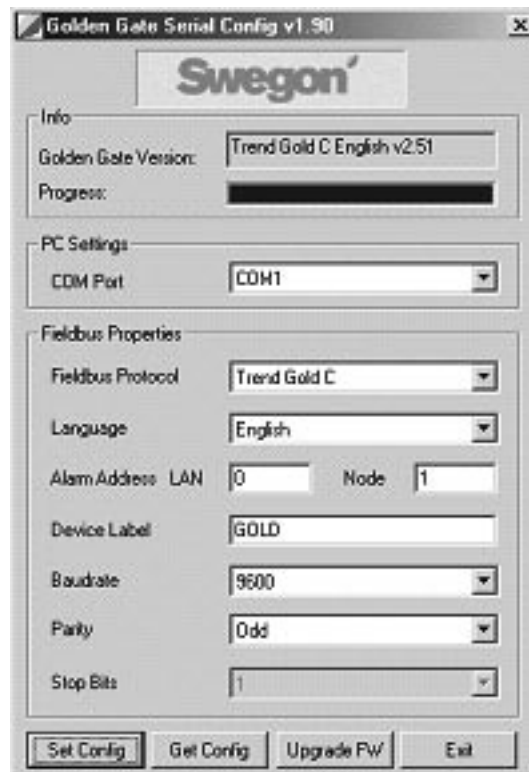


Fig. 3



### 3.3 Network, air handling unit

Connect the network between the communication unit and the GOLD.

#### Version C/D (see Figures 1 and 4)

Connect the wires between the terminals circled at A in Figure 4 and the communication unit as specified below:

GOLDen GATE EIA-485	GOLD EIA-485
1 (GND)	29 (GND)
2 (B)	28 (B)
3 (A)	27 (A)

The dipswitch for termination must be active for the EIA-485.

ON=Active.

#### Version B (see Figure 5)

Use the data communication cable supplied for connecting with 6-pin modular contact RJ12 to 6 (see Fig. 1) and 9-pol D-sub to GOLD (see Fig. 5). Dipswitch 4 on the GOLD unit's control unit must be set to the ON position and dipswitch 3 to the OFF position, see Figure 5.

#### Version 4/A (see Figure 6)

Use the data communication cable, supplied, with 6-pin modular contact RJ12 to 6 (see Fig. 1) and the round contact to the GOLD (see Fig. 6).

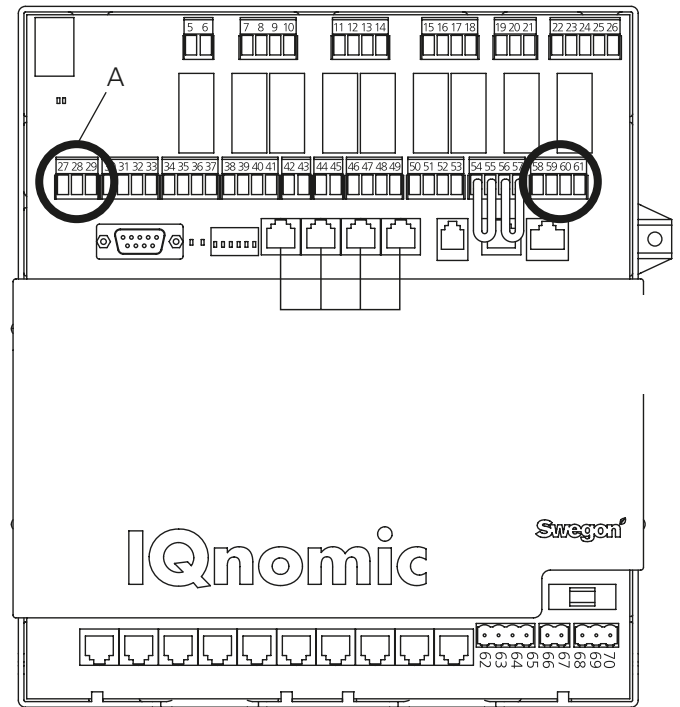


Fig. 4

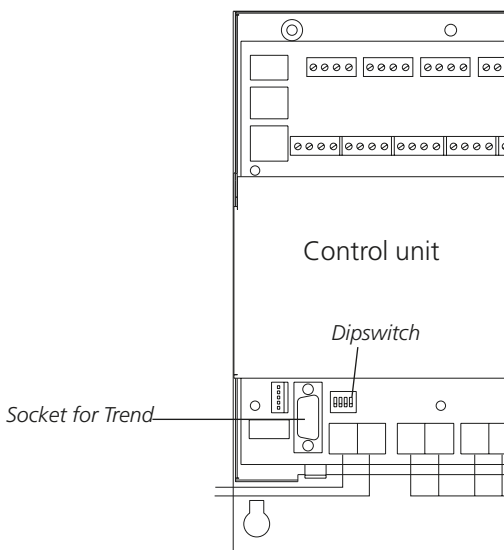


Fig. 5

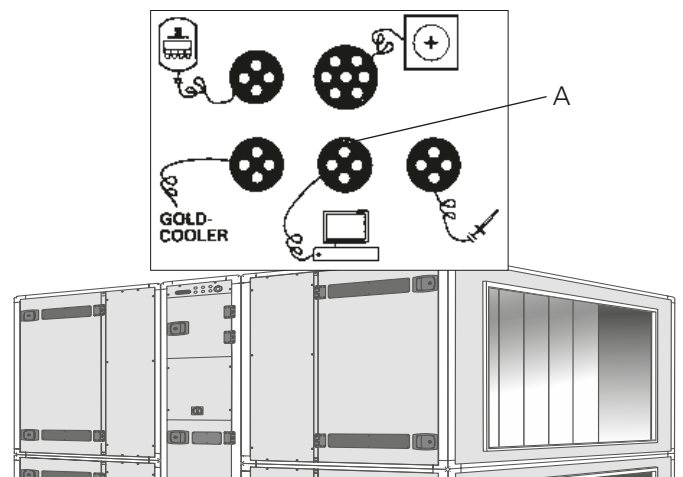


Fig. 6

## 4. Commissioning

For Version C/D, the following settings need to be entered in the hand-held micro terminal:

Select LonWorks/Trend or Modbus in the EIA-485 communication menu and check the following under Settings:

Address = 1.

Baud rate = 38400

Parity = none.

Stop bits = 1.

The search path, in the hand-held micro terminal of the GOLD, is: "SETTINGS", "INSTALLATION", "COMMUNICATION", "EIA-485" and "PROTOCOL" / "SETTINGS", see the Operating and Maintenance Instructions for the GOLD.

**For Version B:** No settings are needed.

**For Version 4/A:** The following settings need to be entered in the Service Menu of the hand-held micro terminal:

Lon-communication=0 (if a TBLZ-1-1-1-41 was used previously, this is set to 1).

## 5. General explanations

### Module Status

LED is off during start up and then shines green when the unit is energized.

LED flashes green while configuring.

LED flashes red in the event of a memory malfunction.

LED shines red in the event of a serious hardware malfunction.

### GOLD Comm.

LED flashes green while the unit is communicating with the GOLD and GOLDen GATE.

LED shines red when communication between the GOLD and GOLDen GATE is down.

LED is off if there is no communication between the GOLD and GOLDen GATE.

### Network

LED flashes green when communication is in progress on the network to the unit.

LED shines red when network is down.

LED is off when there is no communication with the unit.

The different available parameters and protocol specific characteristics are documented in separate product leaflets.

These leaflets can be downloaded from the Internet: [www.swegon.com](http://www.swegon.com).

The GOLD unit operates regardless of whether or not the network is active.