

INSTALLATION - TBDA SILENCER

GOLD sizes 11-32

1. GENERAL

The TBDA is an absorption-type silencer, designed for installation in the ducting near the GOLD air handling unit. The casing of the silencer is made of galvanised sheet steel. The silencer baffle elements consist of sound absorbing material of type Cleanolon - a material that has been specially developed for insulating the inside of silencers. The material is type-approved with respect to cleaning, emissions and fibre entrainment. The material meets the provisions of Surface Layer Class 1 (the highest class). In systems with size 11/12 and 15 GOLD air handling units, Eurolon type sound absorption material is used in the casing of the silencers. This absorption material consists of mineral wool, backed by a staple, fibre-migration-proof surface layer. The insulation is held in place by galvanised, perforated sheet steel. The silencer is fitted with a longitudinal centre baffle element. In systems with size 21/22 and 31/32 GOLD air handling units, the silencers are fitted with a number of baffle elements, secured to a frame of galvanised sheet steel.

1.1 Specification

The design, size, etc. are specified in the documentation that accompanies the silencer on delivery.

2. INSTALLATION

The TBDA silencer should be installed with the baffles standing vertically, for horizontal or vertical airflow.

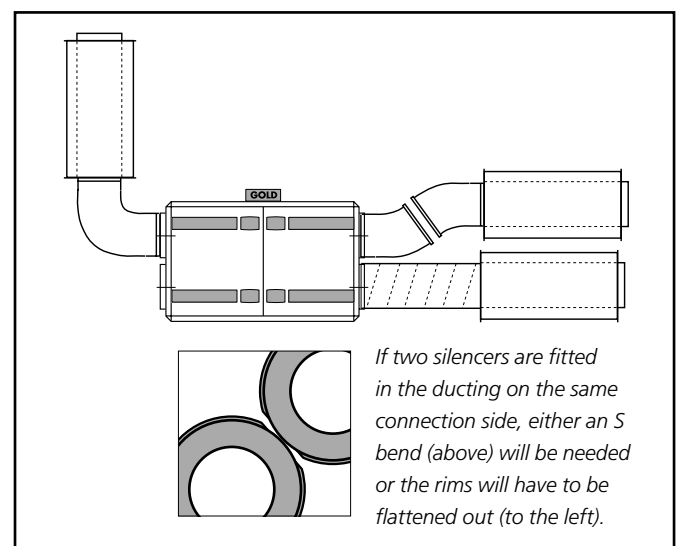
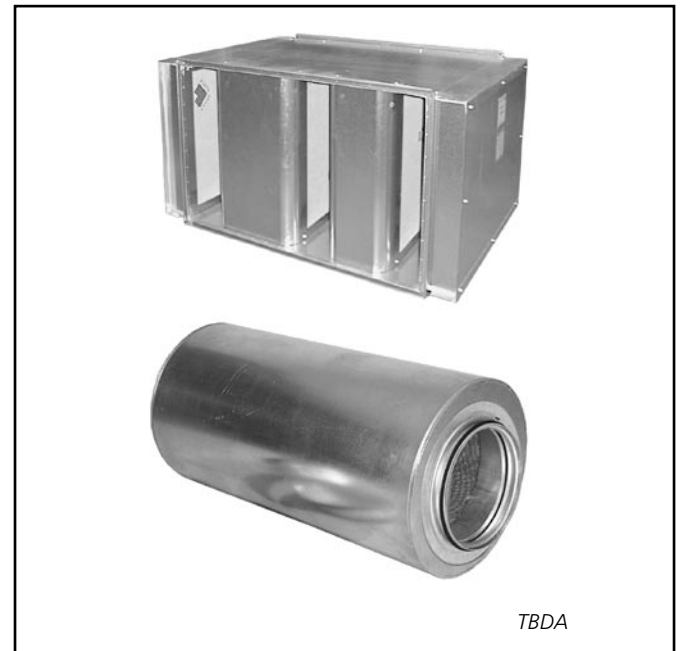
2.1 Installation tips, TBDA-1-031 and -040

The circular silencers have approved rubber ring gaskets and are designed for installation in the ducting. Access covers must be arranged in the ducting near the silencer to enable inspection and cleaning.

Since the diameter of the silencer is larger than that of the connected ducting, an example of how the silencers should be installed is shown in the adjacent illustration. If the rims of the silencers are flattened out, they can be installed without any S bend.

2.2 Installation tips, TBDA 080-040 and 120-060

The TBDA 080-040 and 120-060 have a connection frame for slip-clamp jointing and can be installed in the ducting or fitted directly to the air handling unit. An access cover must be arranged near the silencer to enable inspection and cleaning.



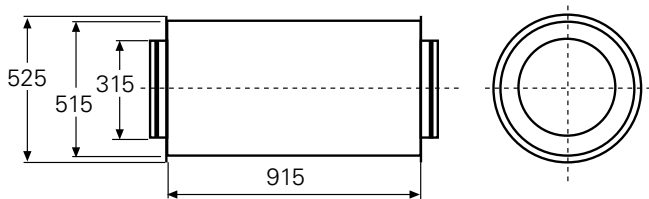
3. MAINTENANCE

Check the condition of the silencer at least twice a year to see whether the silencer needs to be cleaned. The silencer must only be dry-cleaned. This should be done using a fine brush or by means of vacuum cleaning.

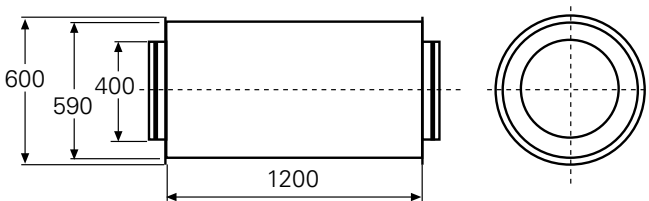
4. TECHNICAL DETAILS

Dimensions

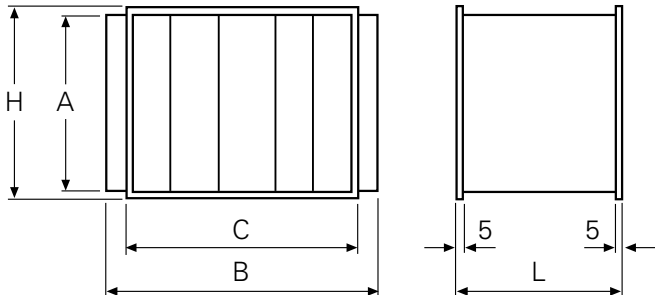
TBDA-1-000-031



TBDA-1-000-040



TBDA-1-080-040 and TBDA-1-120-060



TBDA	A	B	C	H	L	Weight, kg
1-000-031	-	-	-	-	-	23
1-000-040	-	-	-	-	-	52
1-080-040	400	1000	800	440	650	36
1-120-060	600	1400	1200	640	650	43