

Instructions for the BASIC BCBB Mixing section, Sizes 080–120

1. General

The BCBB mixing section has three interconnected dampers at one level for outdoor air, recirculated air and exhaust air. The mixing section has diagonal dampers with counter-rotating damper blades made of aluminium-zinc coated, double-skin sheet steel, to environment class M3. The diagonal dampers offer excellent mixture with linear flow characteristic.

The BCBB can be inspected from the adjacent unit section.

The damper actuator can be installed between the dampers at the centre of the mixing section.

The damper blades are journaled in nylon bearings.

The outdoor air and exhaust air dampers are connected in parallel, whereas the recirculated air damper pivots in the opposite direction. The 3 damper assemblies are individually adjustable for obtaining the appropriate mixing ratio.

1.1 Specification

The version, size, etc. are specified in the delivery documents.

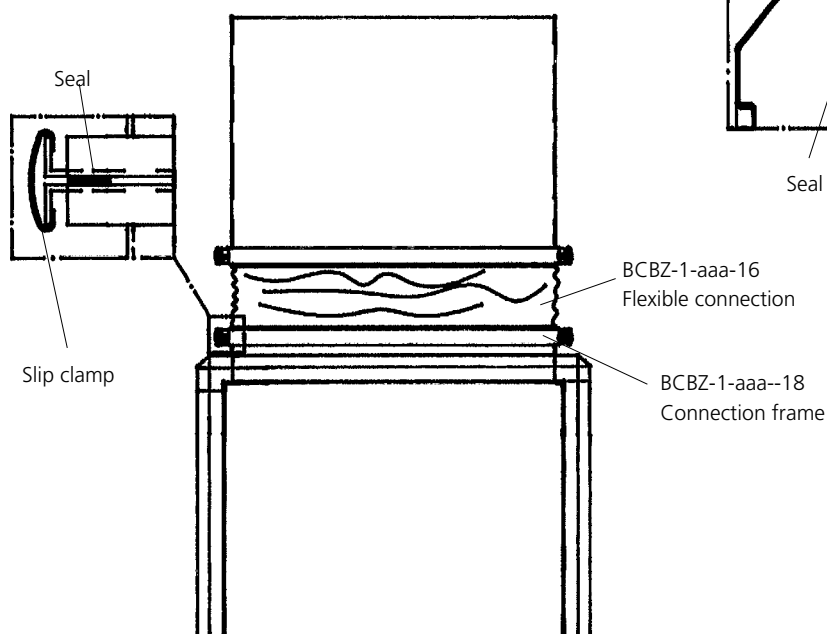


2. Installation

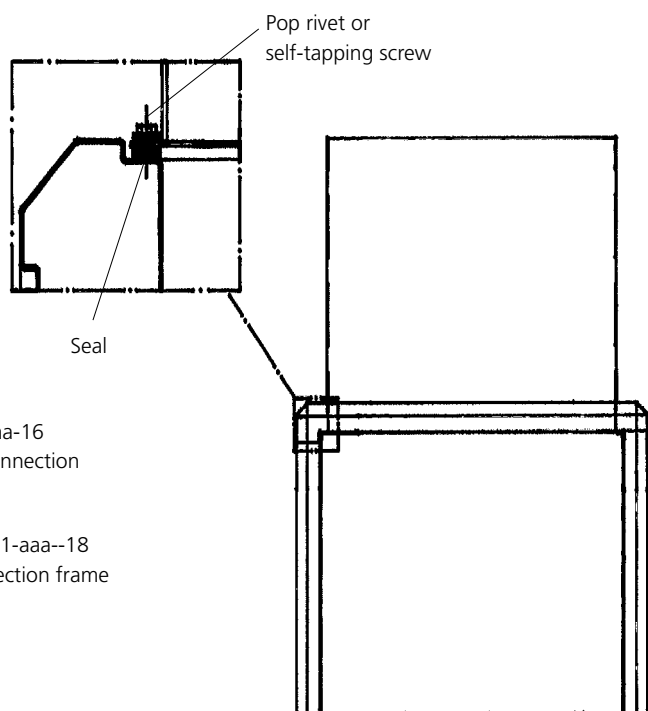
2.1 Mounting

Fit the mixing section with the damper shafts horizontal. The BCBB should be connected to the ducting as follows:

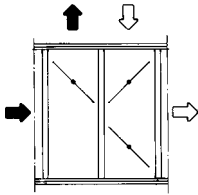
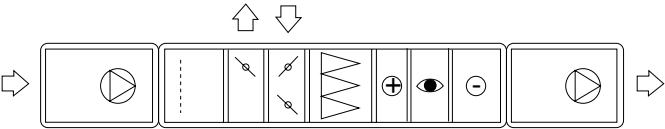
a) With BCBZ-1-aaa-18 connection frame



b) With flanged duct



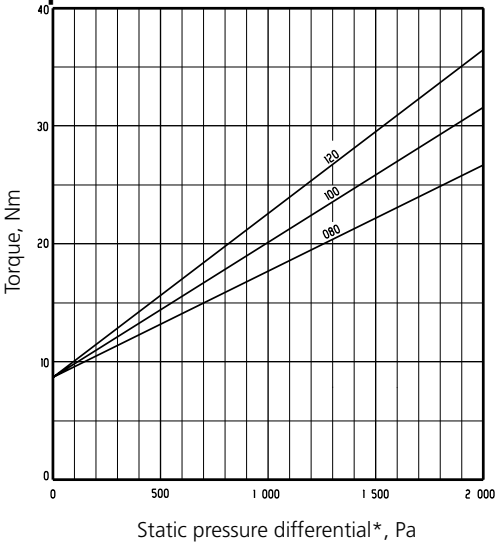
2.2 Installation alternative



Right-hand version is shown.

3. Technical data

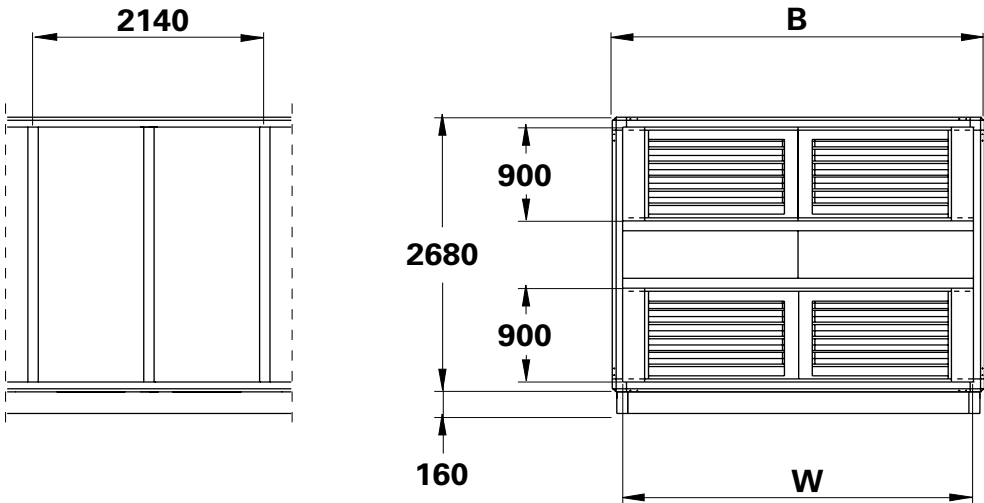
3.1 Torque



*Pressure differential across closed damper(s).

The size 080–120 mixing sections are equipped with two dampers per opening, a total of six dampers. The two dampers that are in the same opening are interconnected, thus three damper actuators are necessary (one for each opening). The torque has been calculated for two interconnected dampers.

3.2 Dimensions



BCBB	B	W	Weight
080	2680	2530	795
100	3390	3240	910
120	3940	3790	1015

Base beams: Standard