

# Instructions for the BASIC BCBA Mixing/Air intake section, Sizes 004–055

## 1. General

The BCBA Mixing and air intake section has two interconnected dampers at one level for mixing recirculated air with the outdoor air. The dampers are flow-perpendicular and have counter-rotating damper blades made of aluminium-zinc coated double-skin sheet steel, to environment class M3. The mixing section offers excellent air mixture with linear flow characteristic.

On the size 004-027 units, the damper actuator can be installed on the right-hand or left-hand side; on the size 035–055 units, it can be installed between the dampers at the centre of the mixing section.

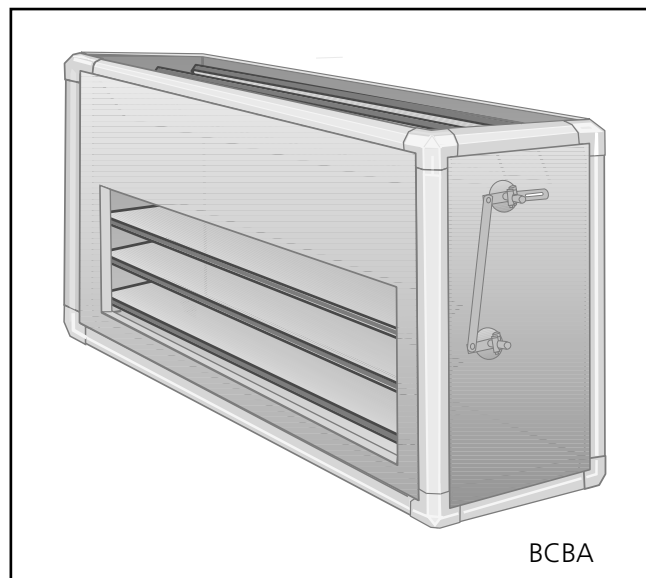
The damper blades are journalled in nylon bearings.

The two damper assemblies are individually adjustable for obtaining the appropriate mixing ratio.

The BCBA is available in an air intake variant (installation alternative 4 and 8).

### 1.1 Specification

The version, size, etc. are specified in the delivery documents.

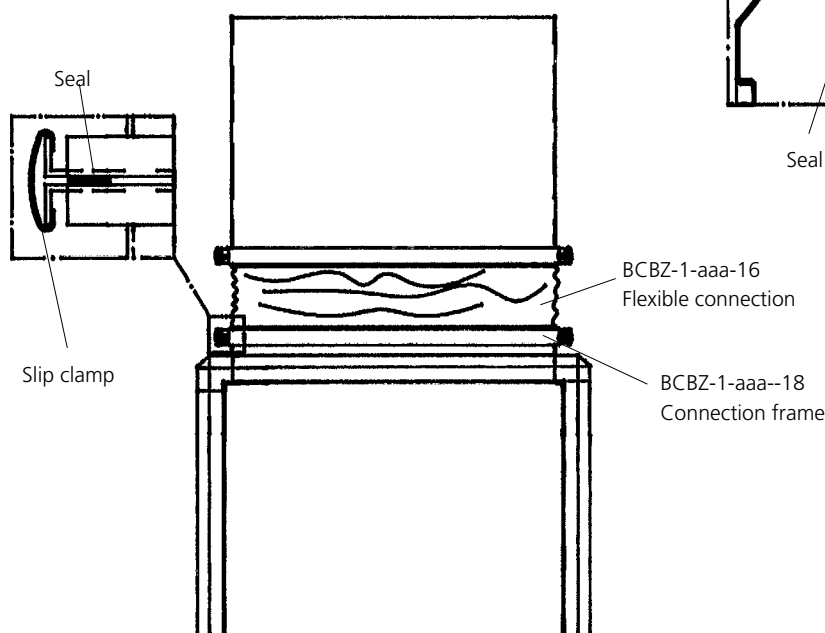


## 2. Installation

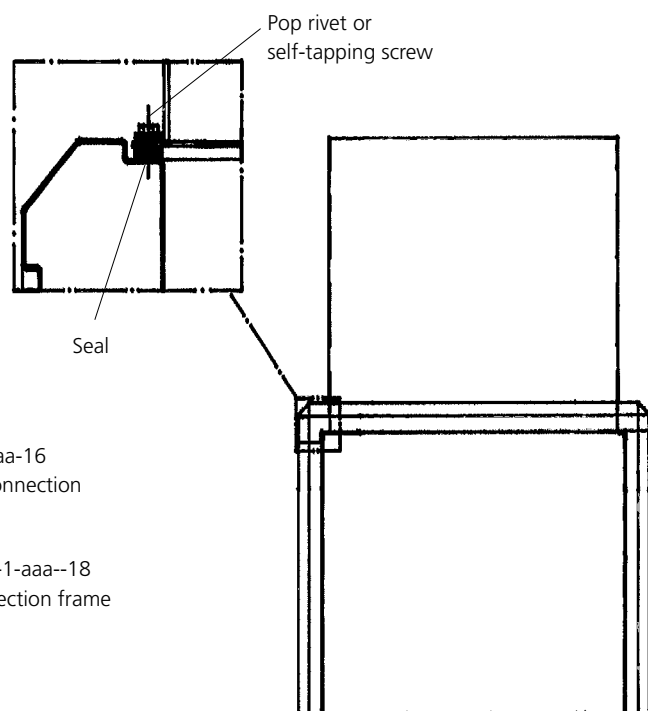
### 2.1 Mounting

Fit the mixing section with the damper shafts horizontal. The BCBA should be connected to the ducting as follows:

a) With a BCBZ-1-aaa-18 connection frame

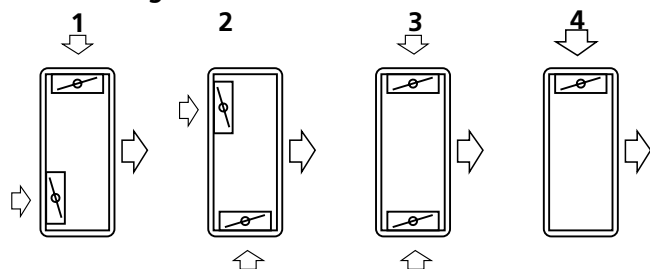


b) With flanged duct

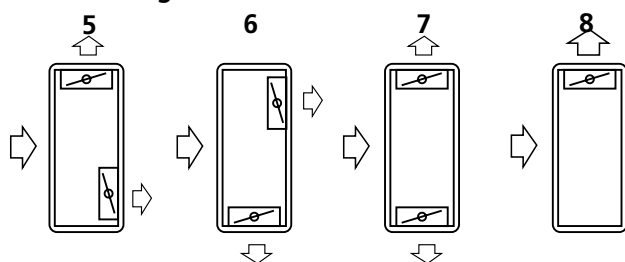


## 2.2 Installation alternatives

For mounting at the inlet

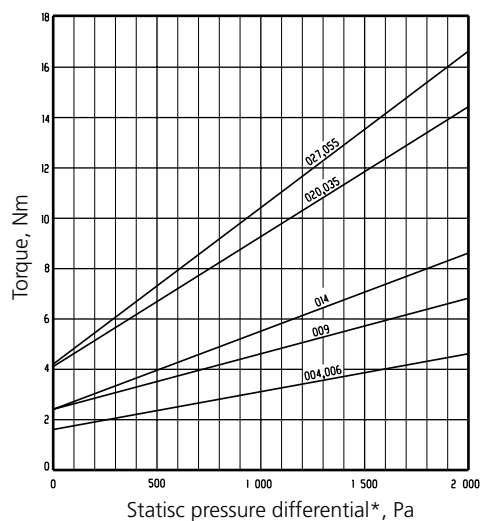


For mounting at the outlet



## 3. Technical data

### 3.1 Torque



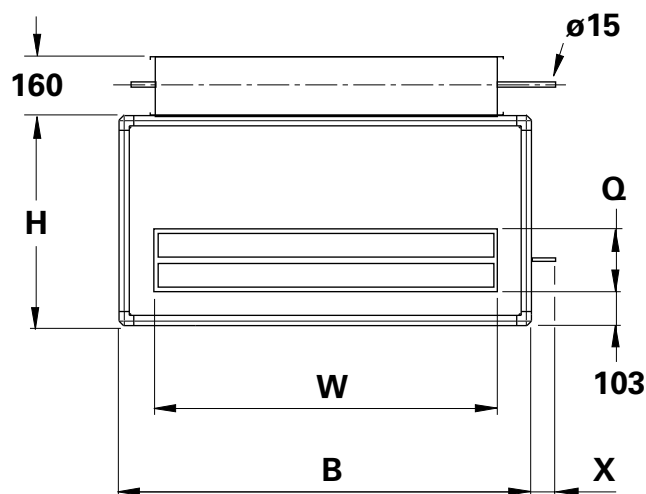
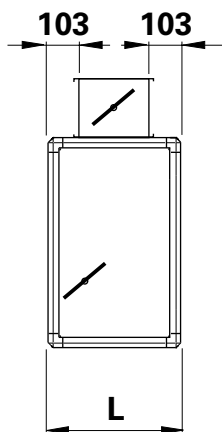
\*Pressure differential across closed damper(s).

The size 004–027 sections are equipped with one damper per opening, a total of two dampers. These two dampers are interconnected, which means that only one actuator is required. The torque has been calculated for two interconnected dampers.

The size 035–055 sections are equipped with two dampers per opening, a total of four dampers. The two dampers that are in the same opening are interconnected, thus two damper actuators are necessary (one for each opening). The torque has been calculated for two interconnected dampers.

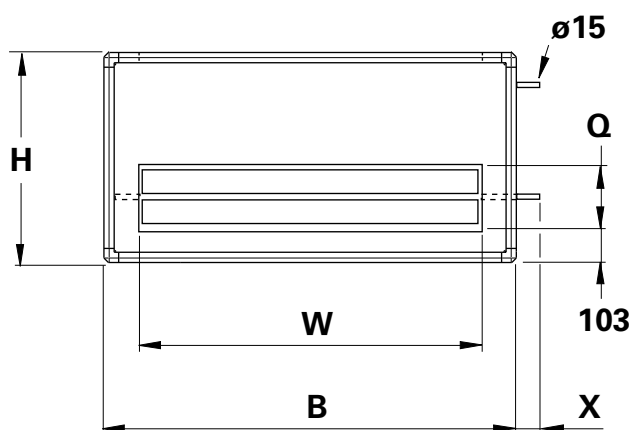
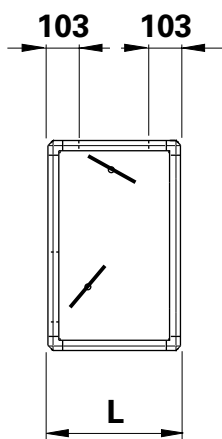
### 3.2 Dimensions

#### Sizes 004–009



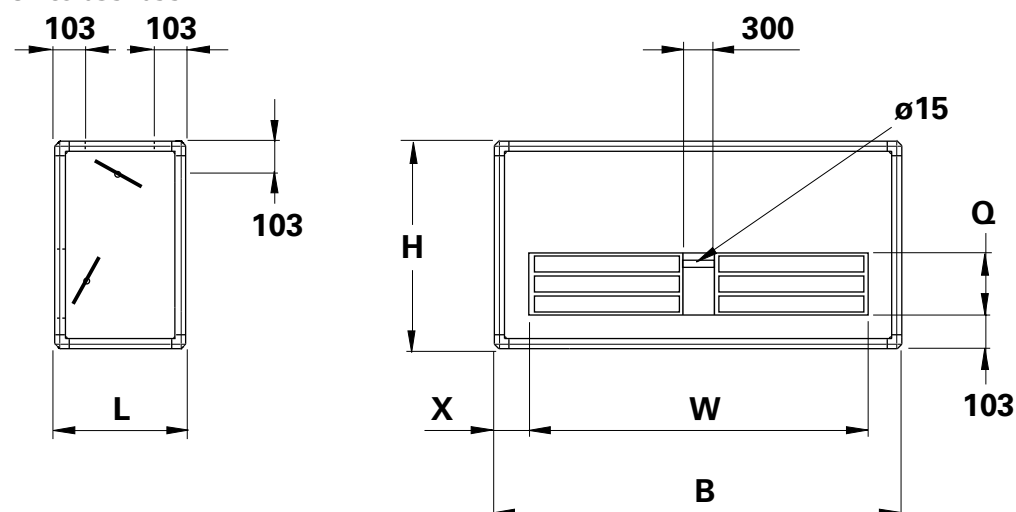
BCBA	B	H	L	Q	W	Weight	
						Std.	El 30 (A30)
004	1039	546	406	200	800	57	69
006	1259	656	406	200	1000	68	83
009	1459	756	506	300	1000	98	116

#### Sizes 014–027



BCBA	B	H	L	Q	W	Weight	
						Std.	El 30 (A30)
014	1759	906	506	300	1400	115	140
020	1946	1026	706	500	1400	154	189
027	2306	1206	706	500	1700	186	231

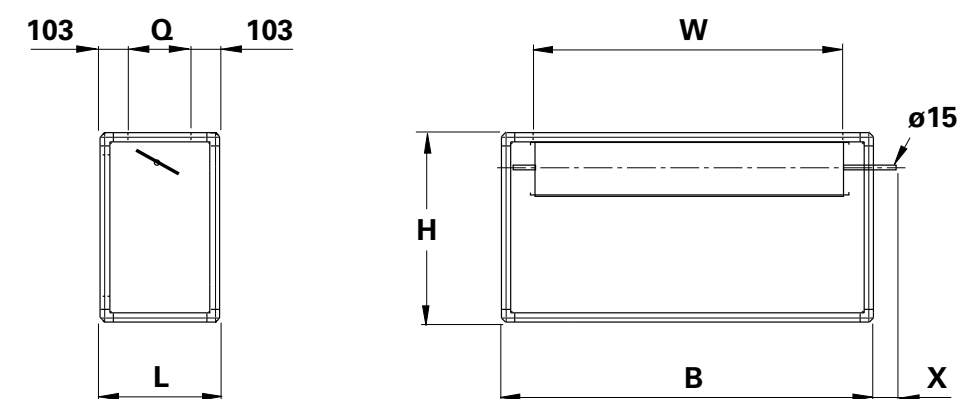
## Sizes 035–055



BCBA	B	H	L	Q	W	X	Weight	
							Std.	El 30
035	2706	1406	806	600	2300	203	259	315
055	3206	1656	806	600	2900	153	315	390

## 3.3 Dimensions, air intake function, installation alternatives 4 and 8

### Sizes 004–055



BCBA	B	H	L	Q	W	X	Weight	
							Std.	El 30
004	1039	546	406	200	800	65	57	69
006	1259	656	406	200	1000	55	68	83
009	1459	756	506	300	1000	70	98	116
014	1759	906	506	300	1400	60	115	140
020	1946	1026	706	500	1400	60	154	189
027	2306	1206	706	500	1700	77	186	231
035	2706	1406	806	600	2300	–	259	315
055	3206	1656	806	600	2900	–	315	390