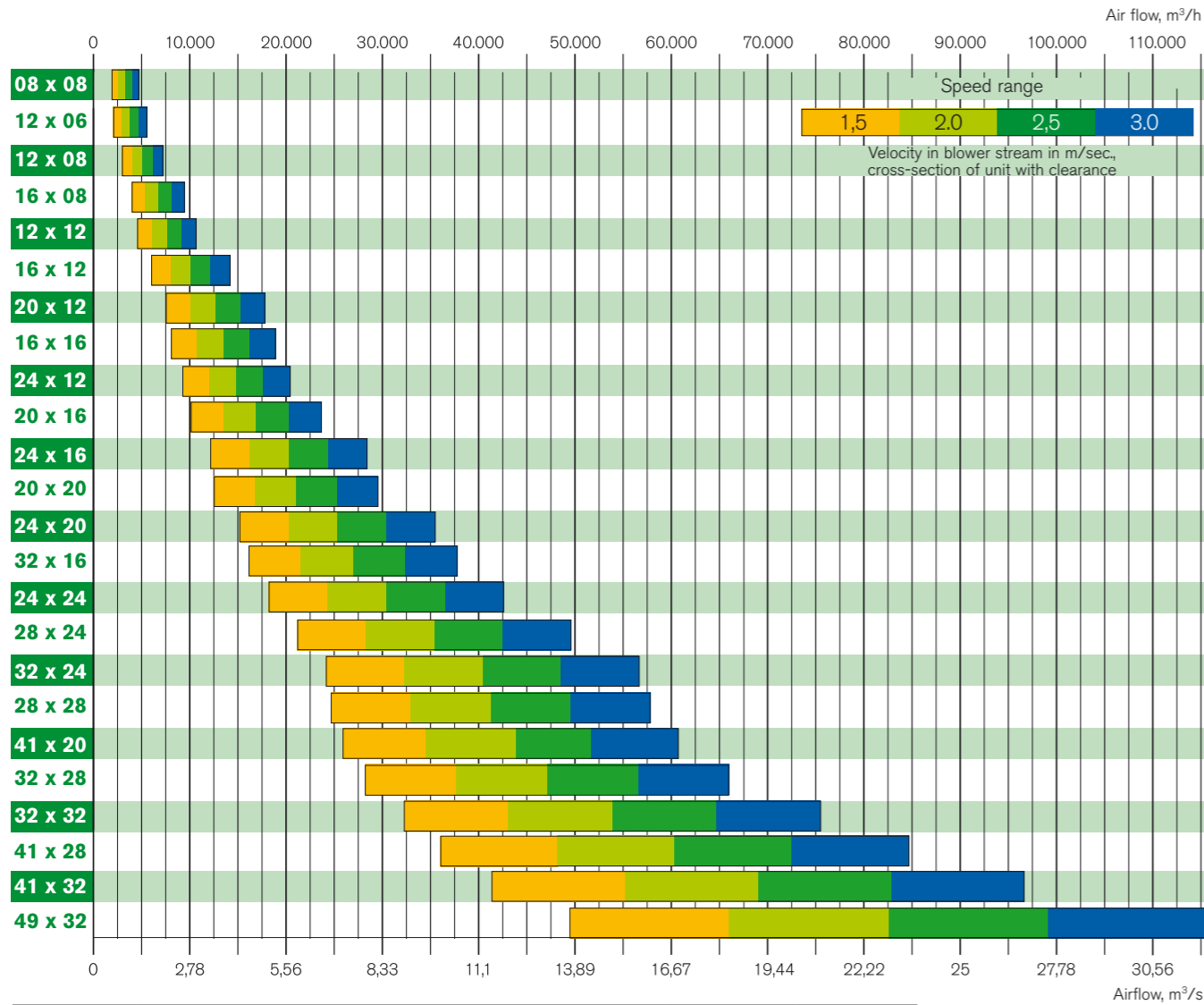


Overview



Size	Airflow		Outside dimensions	
	m³/h	m³/s	Width mm	Height mm*
08 x 08	2.000 – 4.700	0,55 – 1,30	688	688
12 x 06	2.200 – 5.300	0,60 – 1,50	964	535
12 x 08	3.000 – 7.100	0,80 – 2,00	994	688
16 x 08	4.000 – 9.400	1,10 – 2,60	1300	688
12 x 12	4.500 – 10.600	1,25 – 2,95	994	994
16 x 12	6.500 – 14.200	1,80 – 3,95	1300	994
20 x 12	7.500 – 17.700	2,10 – 4,90	1606	994
16 x 16	8.100 – 18.900	2,20 – 5,25	1300	1300
24 x 12	9.100 – 21.200	2,50 – 5,90	1912	994
20 x 16	10.100 – 23.600	2,75 – 6,55	1606	1300
24 x 16	12.100 – 28.300	3,35 – 7,85	1912	1300
20 x 20	12.600 – 29.500	3,50 – 8,20	1606	1606
24 x 20	15.200 – 35.400	4,15 – 9,85	1912	1606
32 x 16	16.200 – 37.800	4,60 – 10,50	2524	1300
24 x 24	18.200 – 42.500	5,00 – 11,80	1912	1912
28 x 24	21.200 – 49.600	5,95 – 13,75	2218	1912
32 x 24	24.300 – 56.600	6,65 – 15,70	2524	1912
28 x 28	24.800 – 57.800	6,80 – 16,05	2218	2218
41 x 20	25.900 – 60.500	7,20 – 16,80	3212	1606
32 x 28	28.300 – 66.100	7,75 – 18,35	2524	2218
32 x 32	32.400 – 75.500	8,90 – 20,95	2524	2524
41 x 28	36.300 – 84.600	10,00 – 23,50	3213	2218
41 x 32	41.500 – 96.700	11,65 – 26,85	3213	2524
49 x 32	49.500 – 115.600	13,60 – 32,10	3825	2524

*Height without installation frame, installation frame = + 110 mm

More sizes can be offered on request.



www.swegon.com

GB-Swegon AT4 2008-03-15

Swegon AT4™

Modular Air Handling Unit
for custom-build installation
and best operating economy



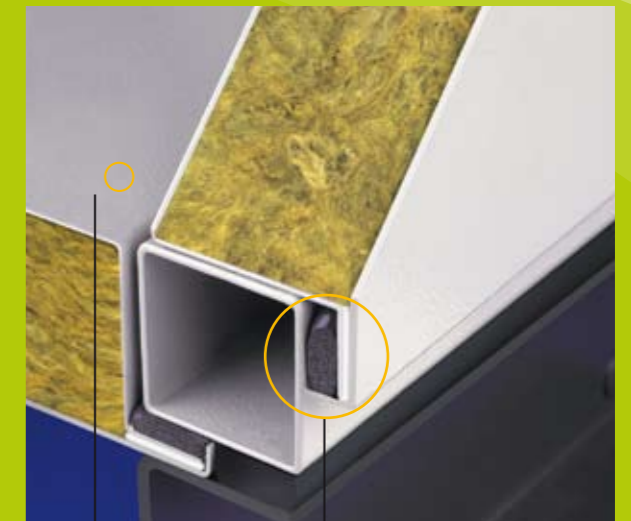
Swegon AT4 – The convincing air handling system

- Variable and optimized adjustment for all system-specific applications.
- High product quality using the very latest production technology.
- Unit design optimized for lowest possible energy consumption.
- Designing and calculating supported by KlimaSoft®, the professional design tool for planners and customers.



Design with experience construction features

- Maximum corrosion protection by galvanised and additional powder-coated casing panels.
- High heat and noise insulation due to 47 mm panel thickness.
- Noise and heat insulation material made of mineral wool; building material class A1; non-flammable pursuant to DIN 4102.
- Patented thermal isolation between the panel shells.
- Minimized thermal transmittance due to optimized casing covers.
- Unit construction can be dismantled.
- Optimal adjustment to building situation due to a variable module dimension of 76.5 mm.

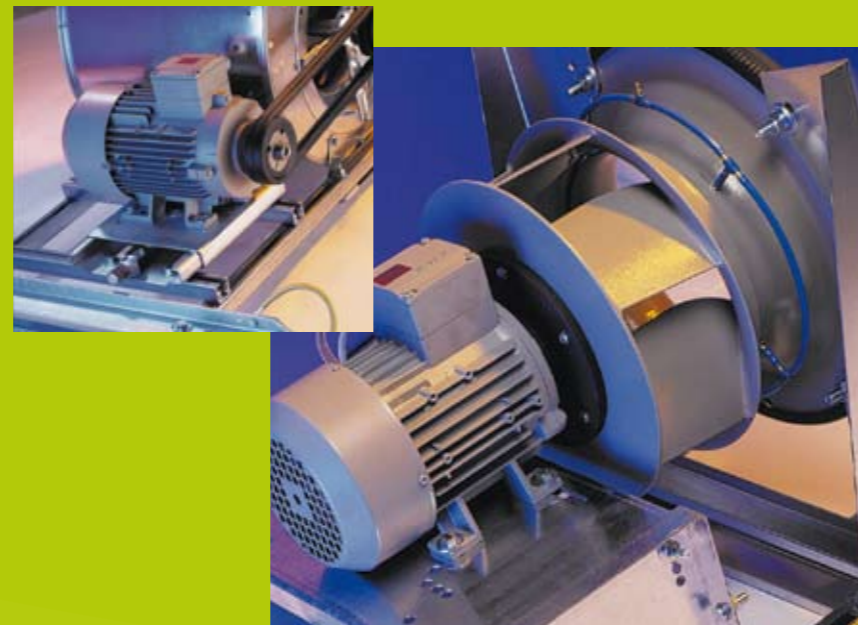


Internal walls hygienically smooth

Patented thermal insulation

Efficiency and economy

- Reduced energy consumption and minimized internal pressure losses by optimized air flow through the air handling components.
- Selection of fans adapted to the operating point.
- Use of all conventional heat recovery systems; layout to the actual application.
- Certified by Eurovent.



Top quality for all applications

- Suitable for interior and exterior installation.
- Various material versions.
- Various heat recovery options.
- Integrated cooling units.
- Large and special units designed to be dismantled.

