

DRGa

Displacement units

Installation-Commissioning-Maintenance

GENERAL

Check the mechanical functions of the product before and after installation. Damaged or defective products must not be installed. Report any defects immediately to the nearest Swegon office.

INSTALLATION

1. A hole is cut in the raised floor as shown in the diagram for dimensions.
2. The diffuser is delivered complete with a mounting frame. The diffuser is separated from the frame by pulling them apart.
3. The mounting frame is fastened into the hole and attached to the building framework by means of nails or screws in the shorter sides.
4. The diffuser is pressed into the mounting frame.

COMMISSIONING

Commissioning of the air flow is carried out with a commissioning damper RSM or equivalent which is placed in the inlet duct to the raised floor.

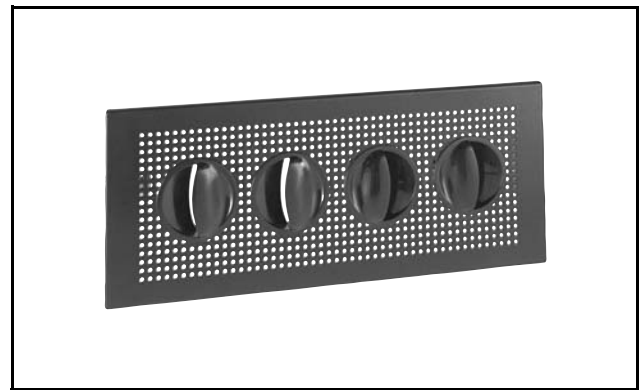
The diffuser is equipped with discs which can be rotated. The spread pattern can be modified as required without the commissioning value being affected.

MAINTENANCE

The diffuser can be cleaned when necessary using lukewarm water with detergent.

INSPECTION

The product marking is inside the connection spigot.



DIMENSIONS AND WEIGHTS

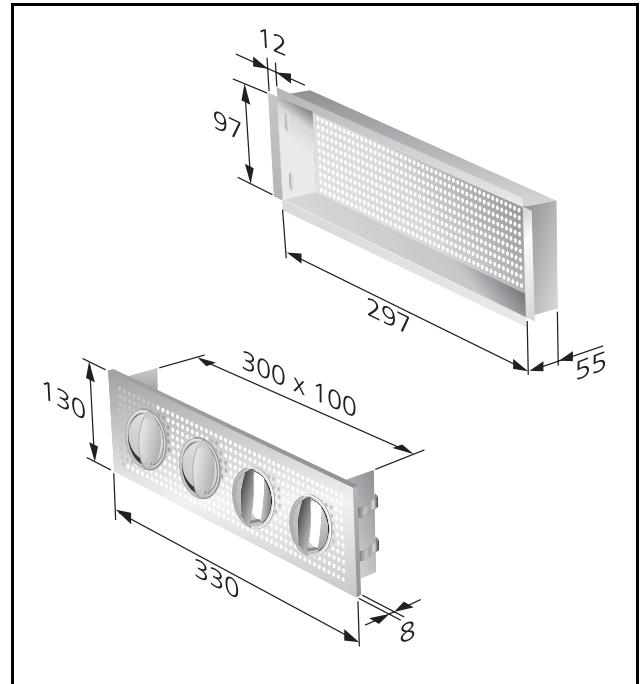


Figure 1. DRG.

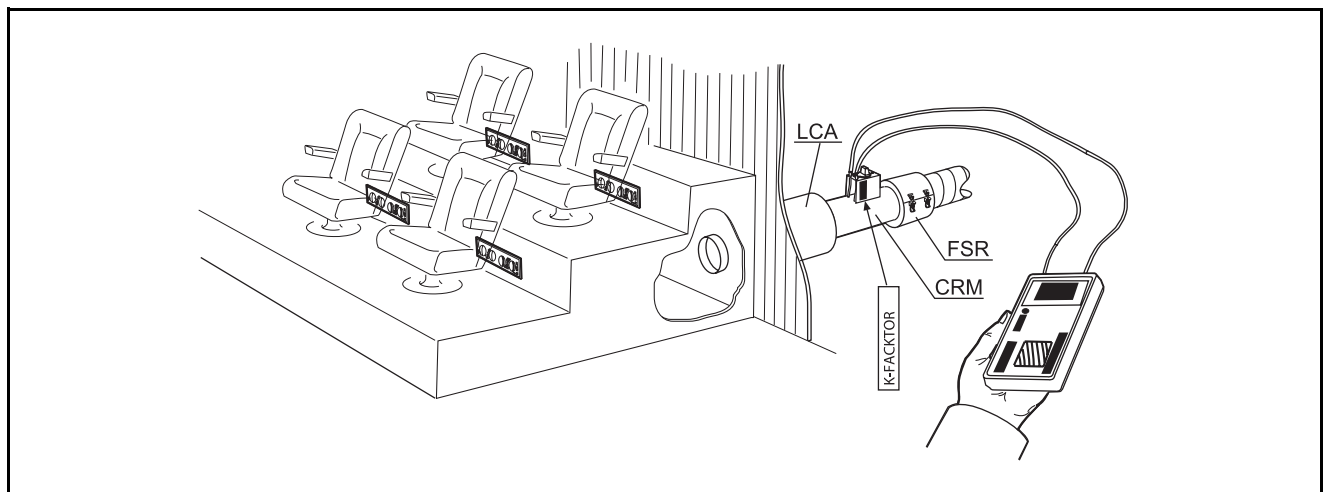


Figure 2. Commissioning.

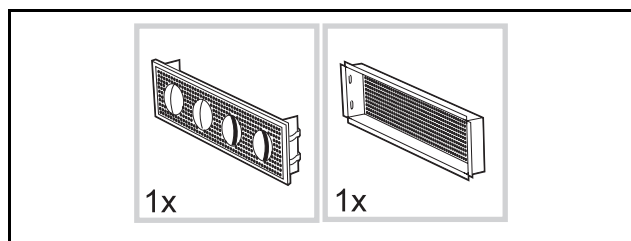


Figure 3. Overview product parts.

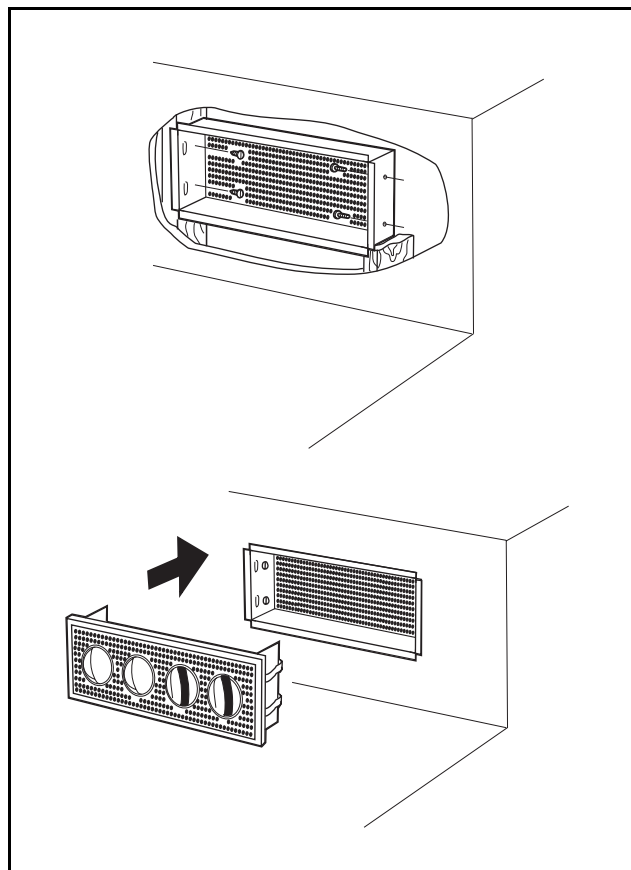


Figure 4. Installation.

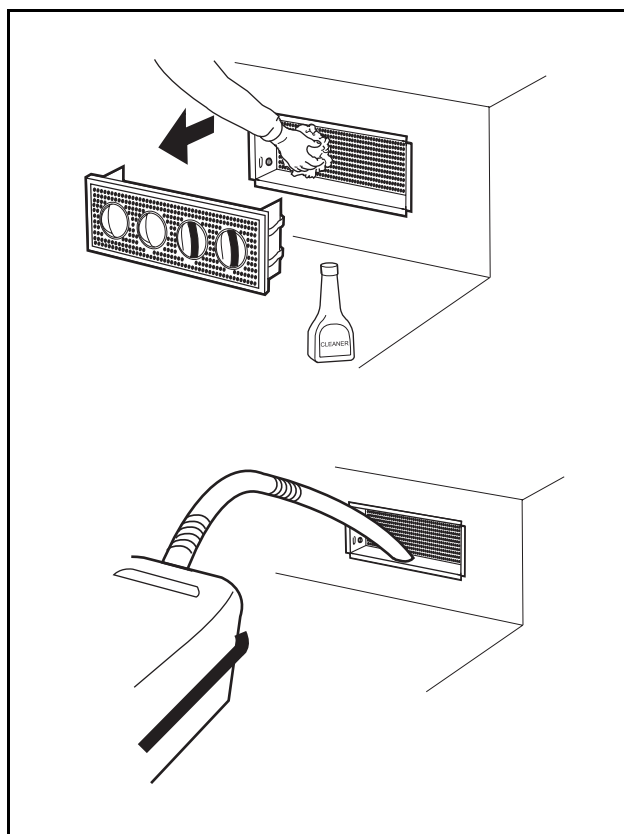


Figure 5. Maintenance.