



CASA F 15-25

House roof ventilators for
extract air ventilation



Swegon 

CASA F 15-25 roof ventilators for houses

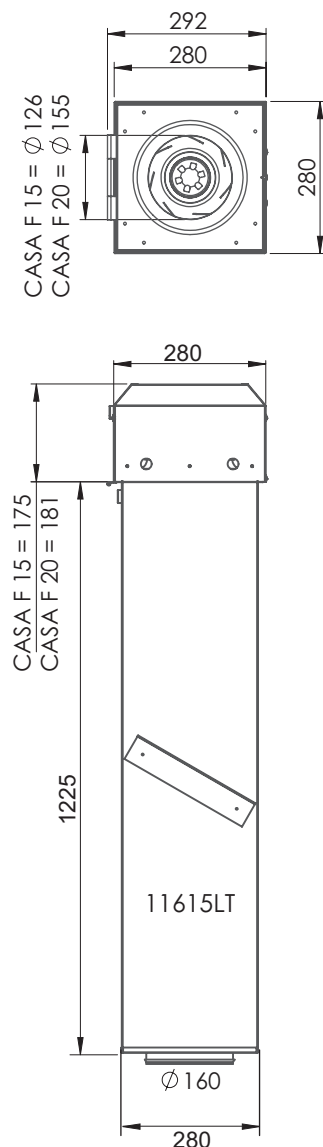
The CASA F roof ventilator combines good technical properties, reliability and a high-quality finish. The starting point for the design has been high efficiency and overall economy, as well as simple installation and service.

The CASA F roof ventilators are suitable for both new builds and renovation projects. In detached and terrace houses, the CASA F roof ventilator can be used for spot ventilation in the kitchen or bathroom. In older properties being renovated, the home's entire mechanical extract air ventilation can be achieved with the CASA F roof ventilator. In high-rise buildings, the CASA F roof ventilators are well suited for ventilating lift shafts and storage areas, for example.

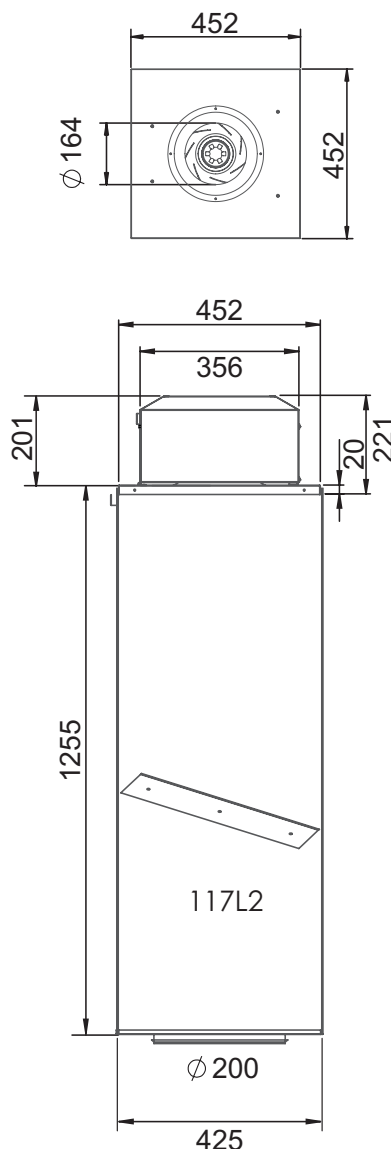
The CASA F roof ventilators are made of electro-galvanised sheet metal, although models painted black are also available.

Dimensions

CASA F 15 & CASA F 20



CASA F 25



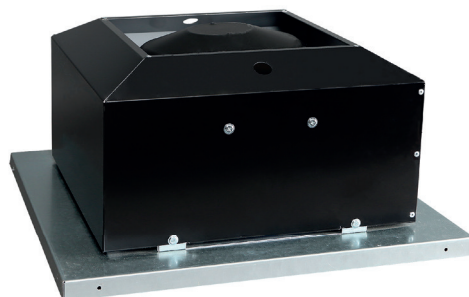
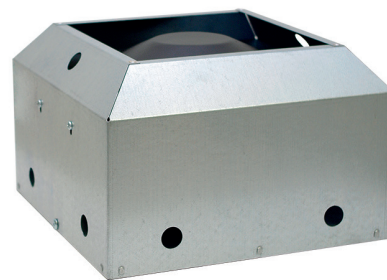
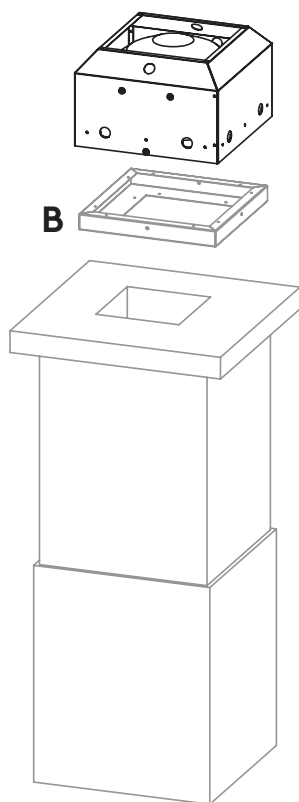
Installation

An acoustically and fire-insulated (EI30) roof penetration collar **A** (11715K CASA F 15 & 20, 11721K CASA F 25) and the flat mounting frame **B** (11615LT CASA F 15 & 20, 117L2 CASA F 25) are available for installation as accessories.

Direct installation



Alternative installation.



Product codes and accessories

Roof ventilators

Part no.	Designation
11615EC	CASA F 15-EC, galvanised
11615ECB	CASA F 15-EC, black
11615	CASA F 15-AC, galvanised
11615B	CASA F 15-AC, black
1162EC	CASA F 20-EC, galvanised
1162ECB	CASA F 20-EC, black
1162	CASA F 20-AC, galvanised
1162B	CASA F 20-AC, black
11625EC	CASA F 25-EC, galvanised
11625ECB	CASA F 25-EC, black

Roof installation accessory

Part no.	Designation
11615LT	Roof penetration collar for F15 and F20 roof ventilators (installation method A)
117L2	Roof penetration collar for F25 roof ventilators (installation method A)
11715K	Mounting frame for F15 and F20 roof ventilators (installation method B)
11721K	Mounting frame for F25 roof ventilators (installation method B)
117AP15	Airstream-operated damper for F15 and F20 roof ventilators
117AP2	Airstream-operated damper for F25 roof ventilators

Accessories

Part no.	Designation
117IP66	Safety switch
IEC	EC-regulator
ITFC	Transformer unit for AC control
116ECSPEED	EC speed adjustment potentiometer

Feel good **inside**

