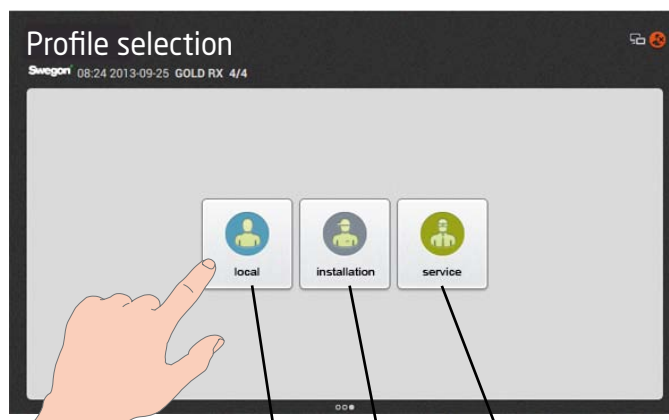


# Overview, IQnavigator hand-held terminal for GOLD

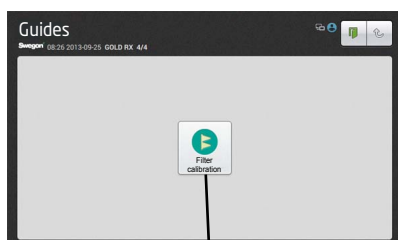
Start the hand-held terminal by pressing the On/Off button on the top side of the terminal.



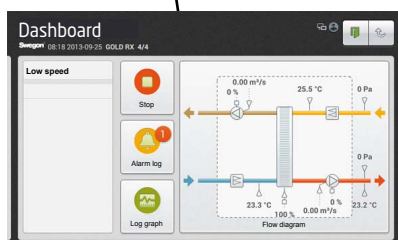
Press on local to access the user level.  
No code is required.

installation.  
A code is required. See the Operation  
and maintenance instructions.

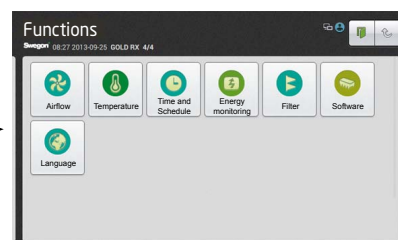
service.  
A code and special training are required.



Scroll



Scroll



**When you change the filters,  
you must always carry out a  
filter calibration!**

Buttons at the upper edge of the touch screen have the following functions:



Press this button to log out.



Press this button to go one step upward in the image tree.



Press this button to close a window and to go back to a previously displayed object.



Press this button to go back to the dashboard.



Help texts for the current view.

The value that can be changed is highlighted in grey.  
A keyboard is displayed at the lower edge of the touch screen when you log on and enter settings.

A value you want to change can be highlighted by pressing it on the touch screen.

The desired value can be entered and saved by pressing the Done button.

The function of the buttons:



Decimal point



Deletes previous character



Decreases the highlighted value



Increases the highlighted value



Minus sign.  
Used for entering negative values.



Unspecified value.  
Used for the Time and Schedule function.