

SWIFT Ceiling b

Installation – Commissioning – Maintenance

20220615

Accessories

Commissioning box:

ALS. The commissioning box is made of galvanized sheet steel and contains a removable commissioning damper, fixed measurement tapping and sound absorbing material*) with reinforced surface layer.

*) Fire resistance rated to B-s1,d0 in accordance with EN ISO 11925-2

Frame:

SAR K. For aesthetic installation of a lowered air diffuser.

Adapter:

ADAPTER, for adaptation to various variants and makes of systemized false ceilings: Ecophon, Gyproc, Dampa, etc. Used also for adaptation to alternative sizes of lay-in type ceilings, for example 625 x 625 or 675 x 675.

Installation

To dismantle the air register face, insert a thin object, for example a Quick Access card or the equivalent, in between the diffuser face and the diffuser backing box in order to release the springs. Move the card from the centre out towards the corner, see Figure 2.

The inlet spigot of the air diffuser backing box can be secured to the connecting duct by means of self-tapping screws or a blind rivets. For flush-mounting in fixed false ceiling constructions, secure the terminal by means of screws into place in the framework through either the sides or top of the diffuser backing box.

The SWIFT Ceiling is designed for installation in modular suspended ceilings. Place the air diffuser directly down in the T-bar framework, and then fix it to the duct system or to the commissioning box.

If an ALS commissioning box is used, it must be secured to the building structure by means of hangers or mounting brackets.

The distance between the commissioning box and the air diffuser can be increased with a circular duct having a length of up to 500 mm without having to lengthen the measuring tubes and damper adjustment cords, see Figure 3.

Commissioning

Commissioning should be carried out with the air diffuser face mounted. Pull the measuring tubes and damper adjustment cords out through the air diffuser face. Then connect the manometer to the correct measuring tube. The red tube from the ALS commissioning box is used for supply air. For extract air, always use the transparent tube. The rated coefficient of performance of the air diffuser

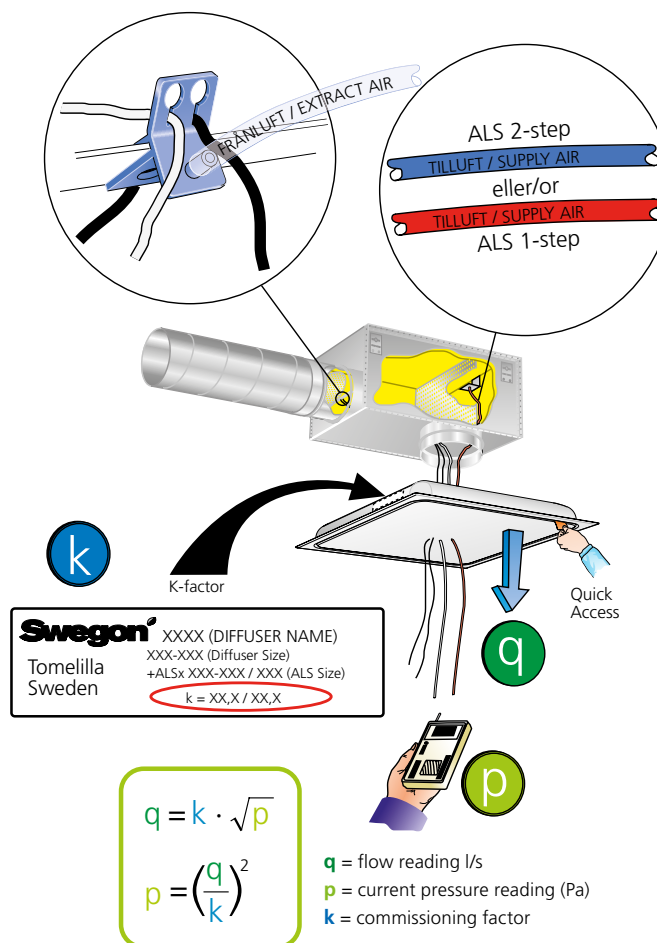


Figure 1. Commissioning.

can be used in a calculation to determine the required commissioning pressure. Conclude commissioning by adjusting the damper to the correct blade position, tie a commissioning knot in the damper cords to indicate the damper position.

The rated coefficient of performance (K-factor) is specified on the identification label of the product and in the relevant commissioning instructions at www.swegon.com.

Maintenance

The air diffuser can be cleaned, if necessary, using luke-warm water with dishwashing detergent added or by vacuum cleaning using a brush nozzle. The duct system can be reached for cleaning after opening the air diffuser face. If a type ALS commissioning box is used, swing the air distribution plate to the side so that you then can grip the handle of the tubular damper casing and rotate it out of its holder. See Figure 4.

Swegon

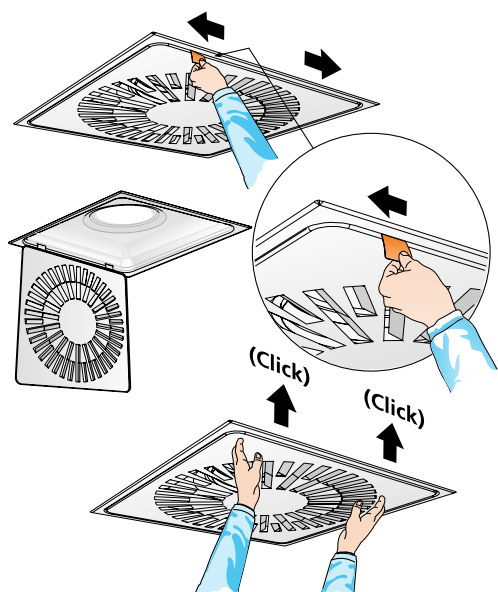


Figure 2. Quick Access, dismantling of the diffuser front.

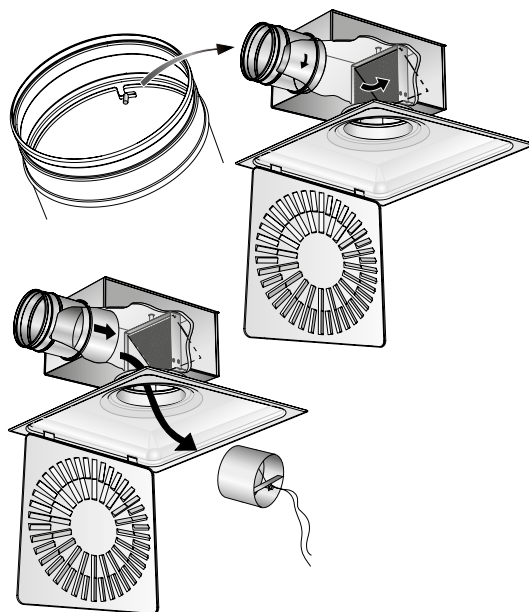


Figure 4. To dismantle the damper.

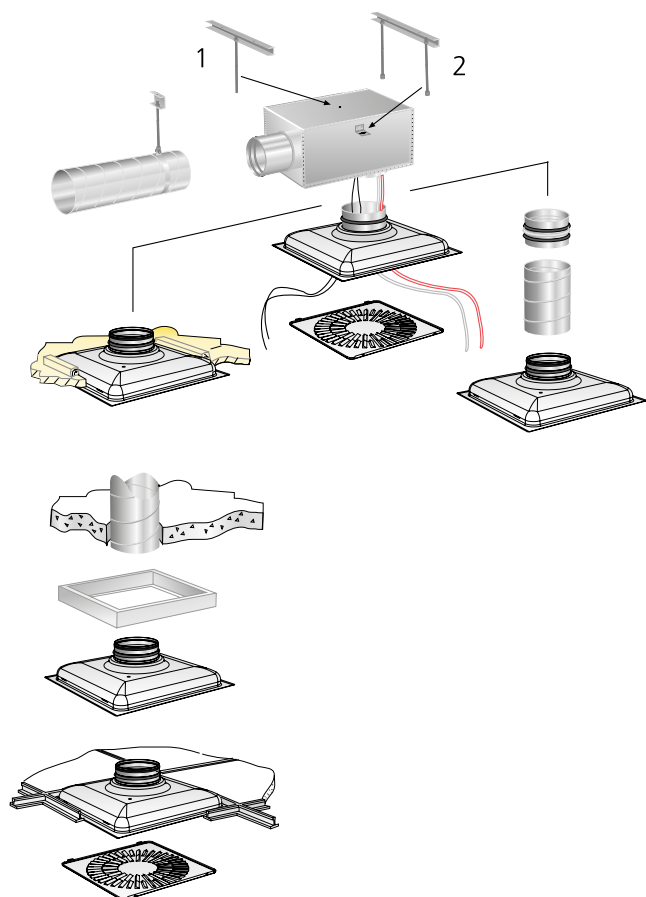


Figure 3. Installation alternatives.

Dimensions and weights

SWIFT C

Size	A	Ød	I	M	Weight, kg
200-500	495	199	475	70	2.5
250-500	495	249	475	70	2.5
200-600	595	199	575	70	3.5
250-600	595	249	575	70	3.5
315-600	595	314	575	50	3.5

Dimensions of opening in ceiling = I x I

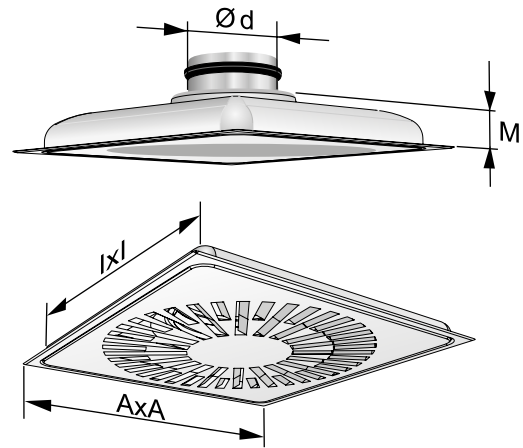


Figure 5. SWIFT C.

SWIFT C with ALS - 1 step

Size	A	B	C	ØD	Ød	E1
200-500	495	404	288	159	200	314
250-500	495	504	332	199	250	354
200-600	595	404	288	159	200	314
250-600	595	504	332	199	250	354
315-600	595	622	388	249	315	395

Size	F1	G1	H	K	Weight, kg
200-500	113	205	375	100	6.0
250-500	113	225	465	115	6.5
200-600	113	205	375	100	7.0
250-600	113	225	465	115	8.7
315-600	93	230	575	140	11.8

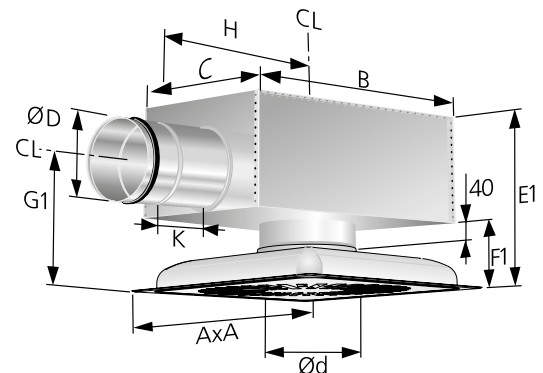


Figure 6. SWIFT C. CL = Centerline.

SAR K Frame

Size	L	Weight, kg
500	495	1.0
600	595	1.0

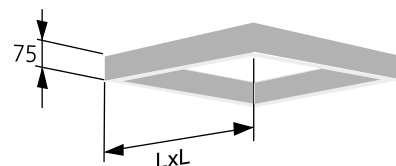


Figure 7. SAR K frame.

Coefficient of performance, SWIFT C

ALSd Size	SWIFT C, supply air			SWIFT C, extract air	
	Size	Standard	Colour of the tube	Standard	Colour of the tube
160-200	200-500	18.1	Red	—	—
200-250	250-500	22.2	Red	14.2	Transparent
160-200	200-600	20.7	Red	—	—
200-250	250-600	28.0	Red	15.9	Transparent
250-315	315-600	32.4	Red	22.6	Transparent

Number of measuring tubes: 1