

# SRY<sup>b</sup>

Installation – Commissioning – Maintenance

20230220

## Accessories

### Commissioning box:

SRYT 1, made in galvanized sheet steel. Contains removable commissioning damper, fixed measurement unit and acoustic lining with a reinforced surface layer, to Fire Resistance Class B-s1,d0 according to EN ISO 11925-2. Tightness class B on the housing according to SS-EN 12237 and VVS/AMA 12.

### Joint piece:

SRYT 2 made in galvanized sheet steel. This is used in wall-to-wall mounting installations.

## Installation

The commissioning box is mounted to the ceiling. The box is equipped with mounting points. When mounting several units in wall-to-wall installations, the c/c measurements between the units are to be used, as given in the special installation instructions.

The sizes of the holes to be cut are given in the dimensions table. The backing box is fastened to the commissioning box using the pre-drilled screw mountings. In wall-to-wall installations is the joint piece SRYT 2 used, to achieve a straight line for all the diffusers.

The diffuser face is attached to the backing box with screw fixing concealed behind the removable nozzles. One nozzle is removed at each end of the diffuser face to gain access to the screws, which go through the perforated distribution plate and up into the backing box.

## Commissioning

Commissioning must be carried out with the diffuser in place. The measuring tubes and damper cords are pulled out of the diffuser through the nozzles. When the pressure measurements are completed and the damper position determined, both of the damper cords are stretched and tied together in a commissioning knot. The cords are then wound round the locking screw which is tightened, see figure 1.

The k-factor is shown on the product label and is also indicated in the relevant k-factor guide which can be downloaded at [www.swegon.com](http://www.swegon.com).

## Maintenance

The diffuser can be cleaned when necessary using luke warm water and detergent. The duct system can be accessed by removing the diffuser face, the distribution plate and the damper unit, see figure 1.

## Environment

The Building Material Declaration is available for downloading at [www.swegon.com](http://www.swegon.com).

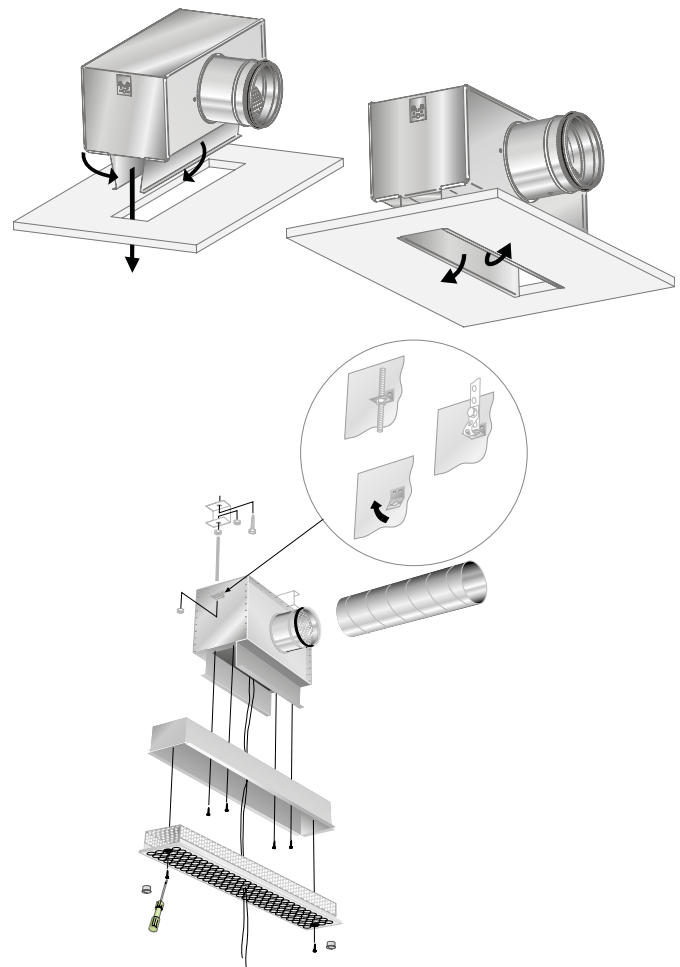


Figure 1. Installation.

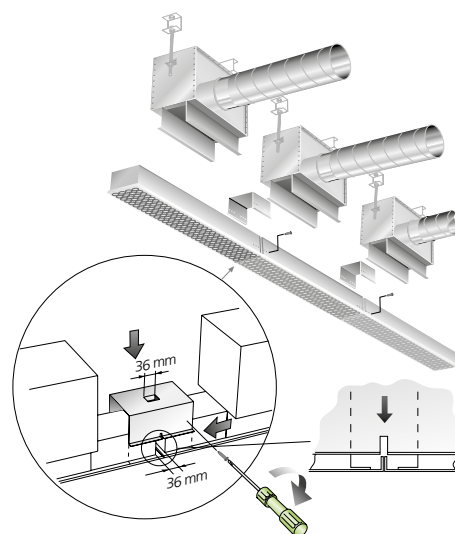


Figure 2. Example wall-to-wall mounting.

# Dimensions and weights

## SRY

Size SRY	Dimensions (mm)												Weight (kg)	No. of nozzles	Setting acc. to fig.
	A	B	C	ØD	G	H	I	J	K	L	M	N			
1-900-1	897	80	50	124	287	197	860	195	500	80	-	-	6.1	21	3
2-900-1	897	120	90	159	308	218	860	230	500	95	-	-	6.9	42	3
3-900-1	897	160	130	159	312	222	860	230	500	95	-	-	8.9	63	3
4-900-1	897	200	170	199	366	276	860	270	500	115	-	-	9.3	84	3
1-1200-1	1197	80	50	124	287	197	1160	195	500	80	-	-	7.1	29	3
2-1200-2	1197	120	90	159	308	218	1160	230	500	95	600	280	11.4	58	4
3-1200-2	1197	160	130	159	312	222	1160	230	500	95	600	280	12.0	87	4
4-1200-2	1197	200	170	199	366	276	1160	270	500	115	600	280	14.5	116	4
1-1500-2	1497	80	50	124	287	197	1460	195	500	80	700	380	11.2	37	4
2-1500-2	1497	120	90	159	308	218	1460	230	500	95	700	380	12.5	74	4
3-1500-2	1497	160	130	199	346	256	1460	270	500	115	700	380	14.7	111	4
4-1500-2	1497	200	170	199	366	276	1460	270	500	115	700	380	15.6	148	4
1-1800-2	1797	80	50	124	287	197	1760	195	500	80	900	430	12.1	44	4
2-1800-2	1797	120	90	159	308	218	1760	230	500	95	900	430	13.6	88	4
3-1800-2	1797	160	130	199	346	256	1760	270	500	115	900	430	15.9	132	4
4-1800-3	1797	200	170	199	366	276	1760	270	500	115	600	280	21.1	176	5

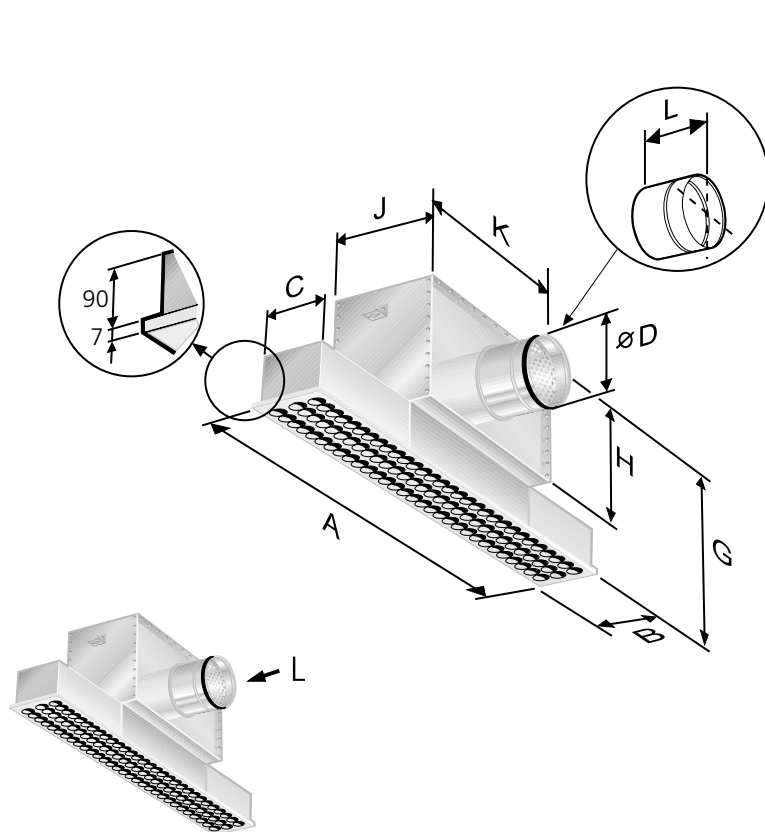


Figure 3. SRY with one commissioning box.  
L = Connection on long side

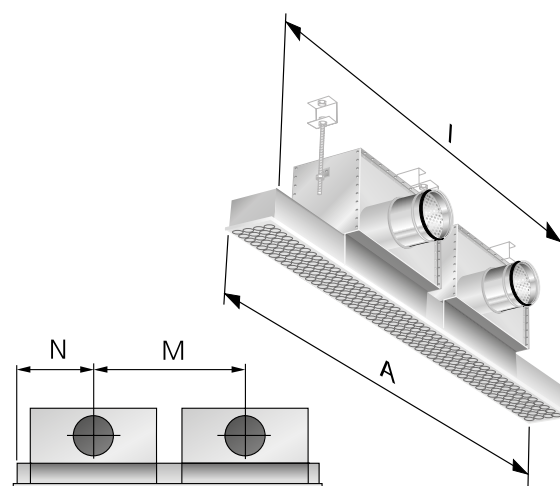


Figure 4. SRY with two commissioning boxes.

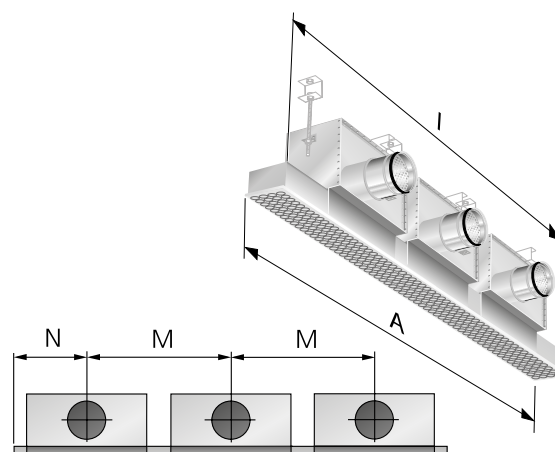


Figure 5. SRY with three commissioning boxes.

# K-factor

SRYT 1b	SRYb – supply air			
Size	Size <sup>*)</sup>	k-factor	Size <sup>*)</sup>	k-factor
1-500-125-L	1-900-1	4,5	1-1200-1	5,3
2-500-160-L	2-900-1	8,6	2-1200-2	6,5
3-500-160-L	3-900-1	12,4	3-1200-2	9,4
4-500-200-L	4-900-1	16,2	4-1200-2	12,4
1-500-125-L	1-1500-2	4,2	1-1800-2	4,6
2-500-160-L	2-1500-2	7,8	2-1800-2	8,6
3-500-200-L	3-1500-2	11,4	3-1800-2	13,0
4-500-200-L	4-1500-2	14,4	4-1800-3	12,4

Note! The K-factor is valid for one commissioning box. Ex: With two or three commissioning boxes for one diffuser, the total of the designed airflow shall be divided by the number of commissioning boxes.

Number of measuring tubes: 1

<sup>\*)</sup>Last figure indicates the number of commissioning boxes