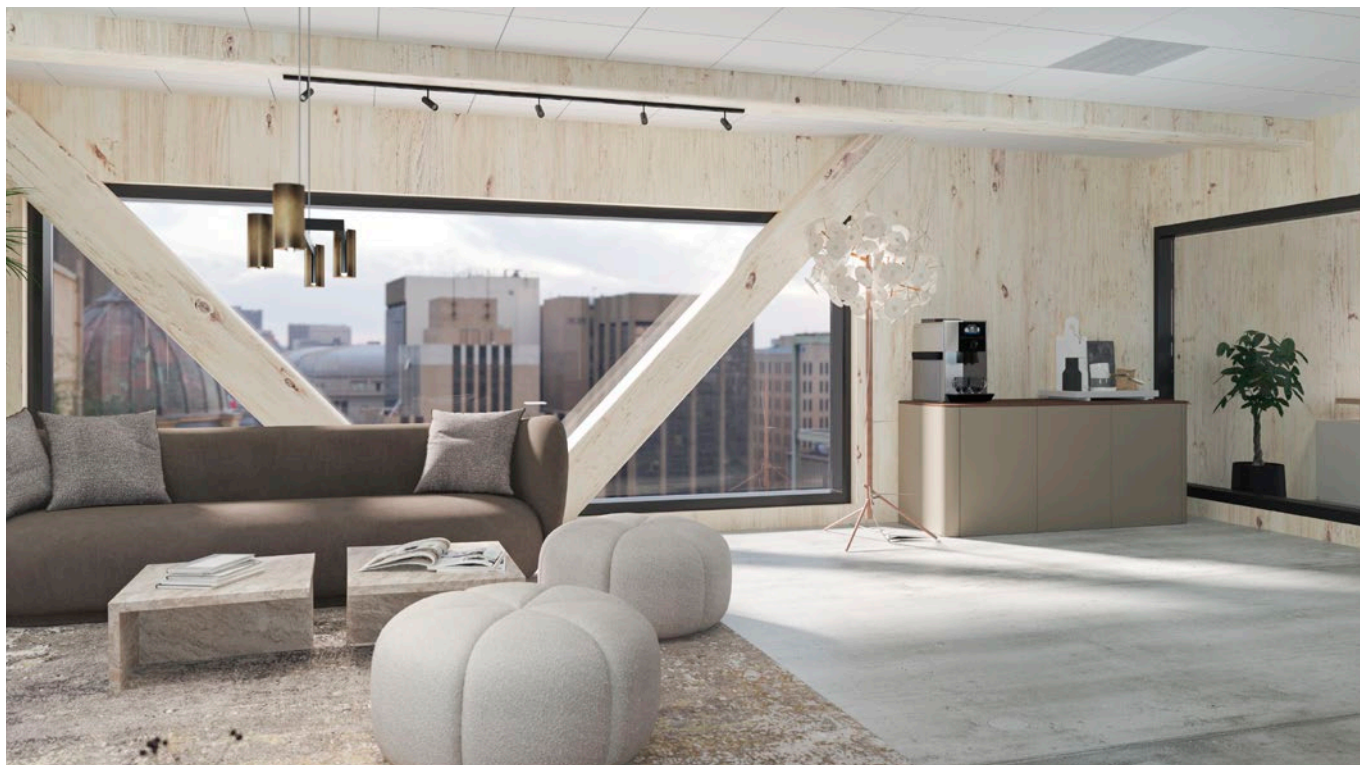


RASTER

Raster grille for extract-/transfer air in square suspended ceiling systems



QUICK FACTS

- Used in square suspended ceiling systems
- Can be placed directly in T15/T24 Lay in suspended ceiling systems
- Can be used in combination with Swegon's ADAPTER for suspended ceiling systems
- Standard finish white RAL 9003/NCS S 0500-N

AIR FLOW – SOUND LEVEL				
Size (mm)	5 Pa, 20 dB(A)		10 Pa, 25 dB(A)	
	l/s	m³/h	l/s	m³/h
395x395	340	1220	450	1620
495x495	520	1875	720	2600
595x595	800	2880	900	3240
1195x595	1500	5400	2000	7200

NOTE! max. velocity over the front area = 2 m/s

Technical description

Design

Square raster grille for extract-/transfer air. Designed for installation in suspended ceiling systems. Can be installed in Swegon's ADAPTER for suspended ceiling systems.

Materials and surface treatment

The grille is made of aluminium and is painted.

- Standard colour:
 - White semi-gloss, lustre 40, RAL 9003/NCS S 0500-N
- Alternative standard colours:
 - Silver gloss, lustre 80, RAL 9006
 - Grey aluminium gloss, lustre 80, RAL 9007
 - White semi-gloss, lustre 40, RAL 9010
 - Black semi-gloss, lustre 35, RAL 9005
 - Grey semi-gloss, lustre 30, RAL 7037
- Non-painted finish and other colours available on request.

Commissioning

A flow measuring damper installed in the duct system is recommended for commissioning and air flow measurements.

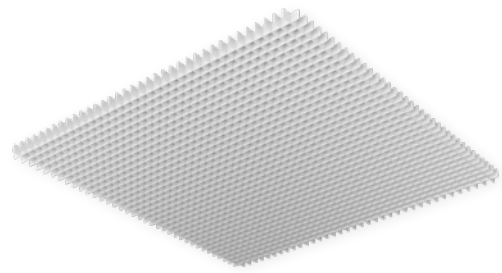
Maintenance

Clean the grille if needed with lukewarm water and dishwashing detergent added. Alternatively, use a vacuum cleaner with a brush nozzle when cleaning. The ducting system is accessed easily by lifting the grille from the suspended ceiling system/ADAPTER.

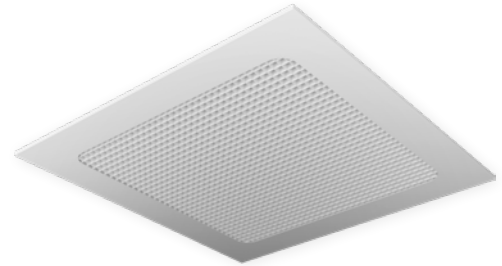
Environment

The Building Materials Declaration is available from www.swegon.com.

Installation



RASTER



RASTER with ADAPTER



Figure 1. RASTER installation.



Figure 2. RASTER installation in ADAPTER.

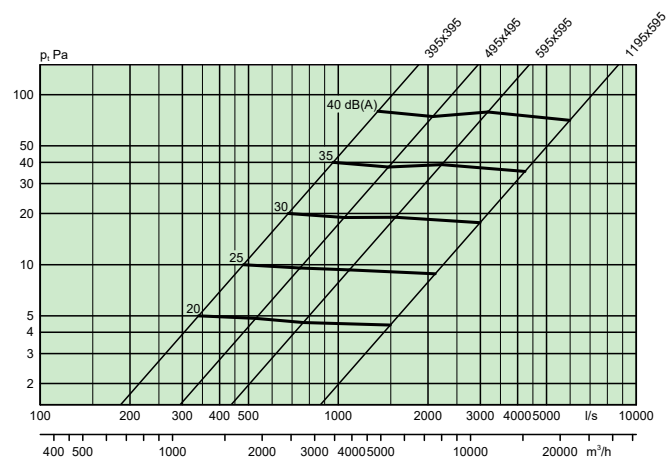
Sizing

Engineering graph

Air flow - Pressure drop - Sound level

- The graph must not be used for commissioning.
- The dB(A) values are for rooms with normal acoustic absorption of 4 dB.
- The dB(C) value lies normally 6-9 dB above the dB(A) value.

Extract air



Dimensions and weights

Specification

Size AxB (mm)	Weight (kg)
395x395	0.38
495x495	0.60
595x595	0.85
1195x595	1.79

Product	Square raster grille for extract-/transfer air	RASTER	a	aaaxbbb
Version				
Dimensions, (mm):	395x395, 495x495, 595x595, 1195x595			

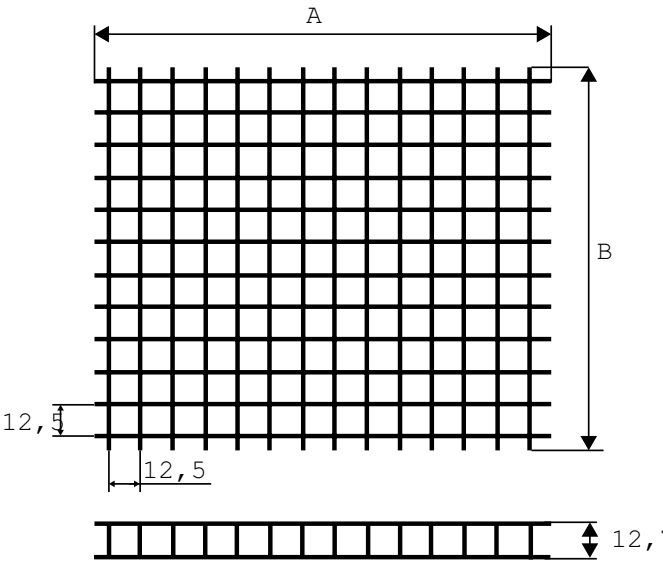


Figure 3. Dimensions RASTER (mm).

Specification text

- Swegon’s square grille RASTER for suspended ceiling systems.
- Fixed horizontal and vertical aluminium vanes.
 - Powder-painted and baked white finish, RAL 9003/NCS S 0500-N.