

Accessories

Commissioning box:

ALS. Manufactured in galvanized sheet steel. The commissioning box includes a removable damper, fixed measurement tapping and sound absorbent insulation covered by a reinforced surface layer, to Fire Resistance Class B-s1,d0 according to EN ISO 11925-2.

Installation

The grille can be pressed directly into the duct. When commissioning box is used, secure it to the building structure with hangers or mounting brackets. The distance between the commissioning box and the air diffuser can be increased by as much as 500 mm using an ordinary circular duct without having to lengthen the measuring tube and damper adjustment cords. See figure 2.

Commissioning

Commissioning must be carried out with the grille installed. The transparent measuring tube and damper cords are pulled through the grille. Connect a manometer to the transparent measuring tube. The required commissioning pressure can be calculated by means of the K-factor of the air diffuser/register. Adjust the damper to the correct position and tie a commissioning knot on the damper cords to indicate the damper setting. See figure 1.

The k-factor is found in the product label and can also be found in the relevant k-factor guide which is to be found at www.swegon.com.

Maintenance

The grille can be cleaned when necessary using lukewarm water and detergent.

If the ALS commissioning box is used, the inside of this should be vacuum cleaned when needed.

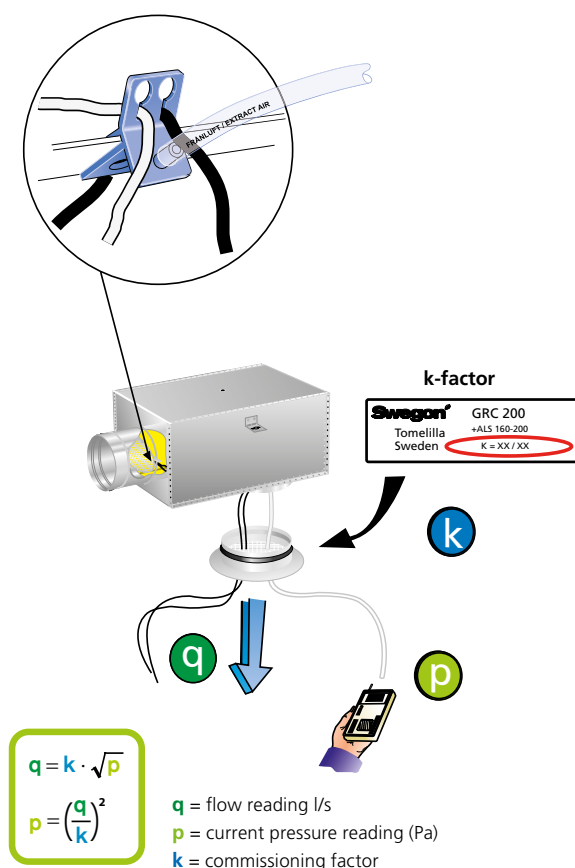


Figure 1. Commissioning.

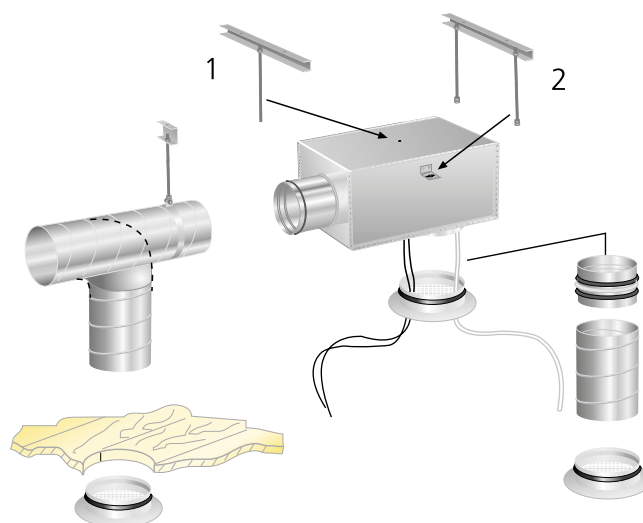


Figure 2. Installation.

Dimensions and weights

Table of dimensions – GRC

Size	ØA	ØB	ØC	L	Weight (kg)
100	138	93	99	36	0,2
125	163	118	124	53	0,2
160	203	148	159	53	0,3
200	243	188	199	53	0,4
250	293	238	249	53	0,5
315	363	303	314	70	0,9
400	448	388	399	75	1,2
500	548	488	499	75	1,6
630	678	618	629	75	2,5

Dimensions of opening = $\text{ØC} + 11 \text{ mm}$

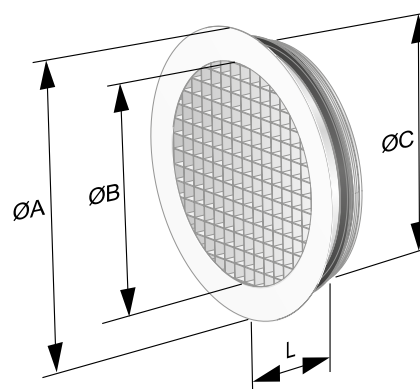


Figure 3. GRC

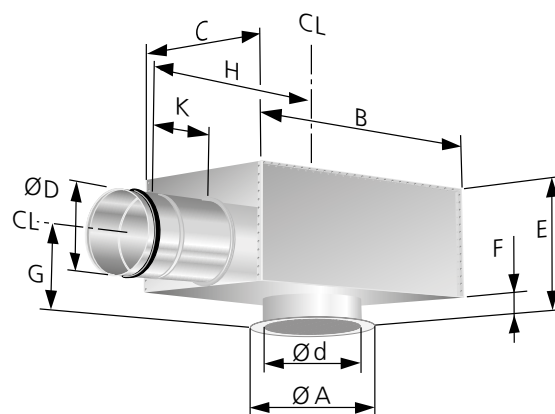


Figure 4. GRC with commissioning box ALS. CL = Centerline.

Table of dimensions GRC + ALS

Size	ØA	B	C	ØD	Ød	E	F	G	H	K	Weight (kg)
100	138	227	192	79	100	162	40	90	200	50	1,5
125	163	282	217	99	125	182	40	100	270	80	2,2
160	203	342	252	124	160	204	40	112	315	80	3
200	243	404	288	159	200	239	40	130	375	100	3,9
250	293	504	332	199	250	279	40	150	465	115	5,7
315	363	622	388	249	315	340	40	175	575	140	8,9
400	448	767	488	314	400	400	40	212	712	175	11,6
500	548	887	588	399	500	510	60	280	795	50	12,1

CL = Center line

K-factor (COP)

ALSd	GRCb	K-factor – Extract air
80-100	100	3,0
100-125	125	4,9
125-160	160	8,2
160-200	200	12,7
200-250	250	22,2
250-315	315	34,0
315-400	400	59,6
400-500	500	95,0

Number of measuring tubes: 1

Colour of the tube: Transparent