

SKD-ZA

Combined supply- and extract air ceiling diffuser



QUICK FACTS

- Space-saving diffuser for efficient ventilation
- Plenum box configured according to size and air flow
- Supply air is distributed radially via adjustable air deflectors
- Extract air is removed via the centrally positioned control valve

SKD-ZA								
Size	$L_{PA} = 30$ dB		$L_{PA} = 35$ dB		$L_{PA} = 40$ dB		$L_{PA} = 45$ dB	
	V (m ³ /h)	Δp (Pa)	V (m ³ /h)	Δp (Pa)	V (m ³ /h)	Δp (Pa)	V (m ³ /h)	Δp (Pa)
400	203	24	322	56	481	119	684	230
500	241	16	322	28	413	45	514	68
600	315	15	394	23	483	35	575	49

Content

Technical description	3
Design	3
Functionality	3
Material and surface treatment	3
Adaptation	3
Accessories	3
Technical data.....	4
Sizing diagram	4
Dimensions	5
Diffuser face and sizes	6
Specification.....	7

Technical description

Design

The SKD-ZA combination diffuser provide space-saving and effective ventilation by integrating supply and extract air in a single compact product. The diffuser is available in a circular or square design.

Supply air is distributed through the radially arranged air deflectors, while extract air is removed via the centrally positioned control valve.

The diffuser face connects to an internally separated plenum box, which is configured according to the required size and air flow. Thermal insulation is integrated between the supply and extract air sections within the plenum box.

This compact combination diffuser is particularly suitable for installations where only a single wall or ceiling opening is available due to construction or installation constraints, with wall-mounted use being especially common.

Functionality

The adjustable air deflectors are designed to reliably prevent short-circuiting between the supply and extract air.

Under appropriate conditions, the extract air control valve can also function as an overflow grille, even without a direct duct connection.

Material and surface treatment

Diffuser face

- Made of galvanised steel.
- Standard colour:
 - RAL 9003, signal white, gloss 70
- Alternative standard colours:
 - RAL 9010, pure white, gloss 70
 - RAL 9006, white aluminium, gloss 70
 - RAL 9005, jet black, gloss 70
 - RAL 7035, light grey, gloss 70

Extract control valve

- Made of aluminium.
- Painted in the same colour as the diffuser face.

Air deflectors

- Made of extruded aluminium profiles.
- Standard colour (similar to):
 - RAL 9005, jet black

Slat holders

- Made of stainless steel.
- Standard colour (similar to):
 - RAL 9005, jet black

Plenum box

- Made of galvanised sheet steel.
- Standard colour:
 - Non-painted.



Adaptation

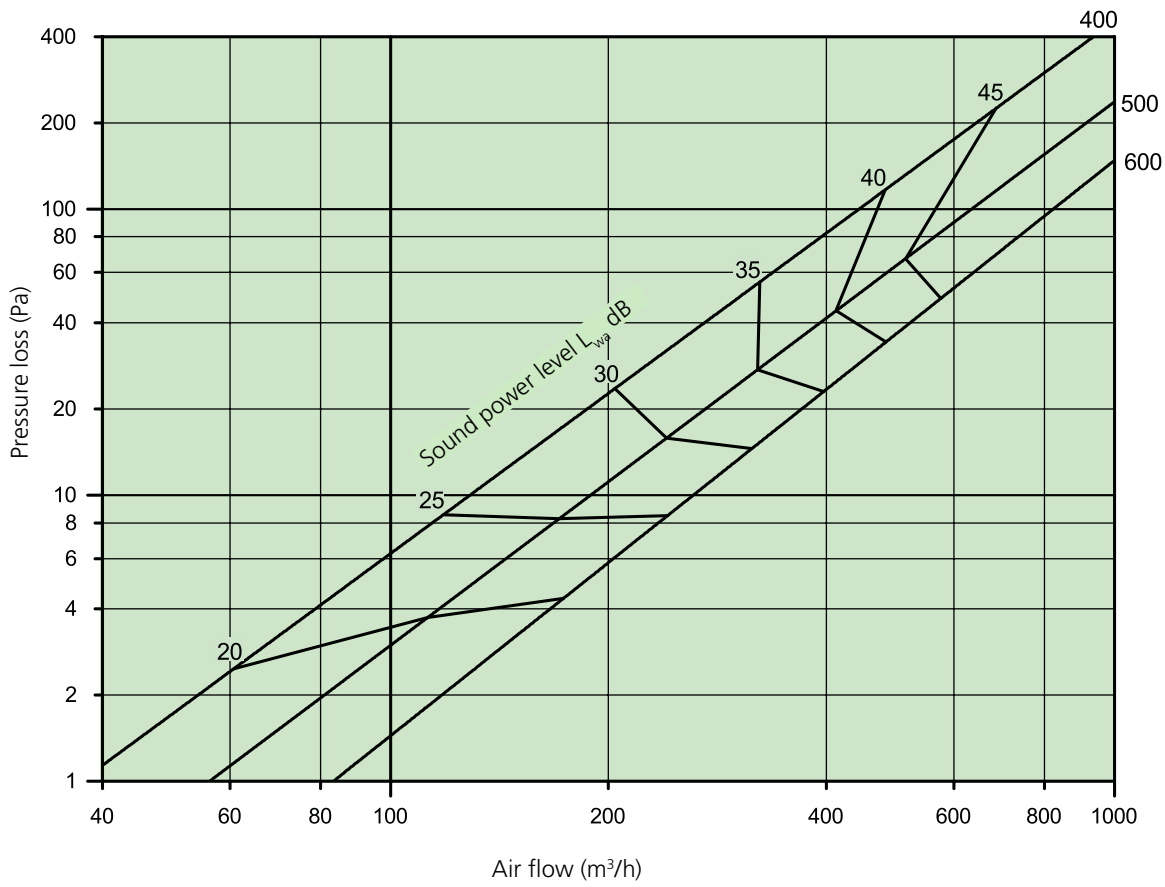
- Other colours available on request.

Accessories

- Integrated sound attenuation.

Technical data

Sizing diagram



Dimensions

Size	$\varnothing A / \square A$ (mm)	$\varnothing B / \square$ (mm)	H (mm)	$\varnothing d1$ (mm)	$\varnothing d2$ (mm)	$\varnothing d3$ (mm)	L1* (mm)	L2* (mm)
400	400	370	225	123	98	100	105	80
500	500	470	280	178	148	160	150	115
600/620/625	600	570	325	222	198	200	180	160

The specified measurements refer to the external dimensions (mm). These can be adjusted within functional limits to meet specific requirements.

* Spigot length without restrictor always 50 mm.

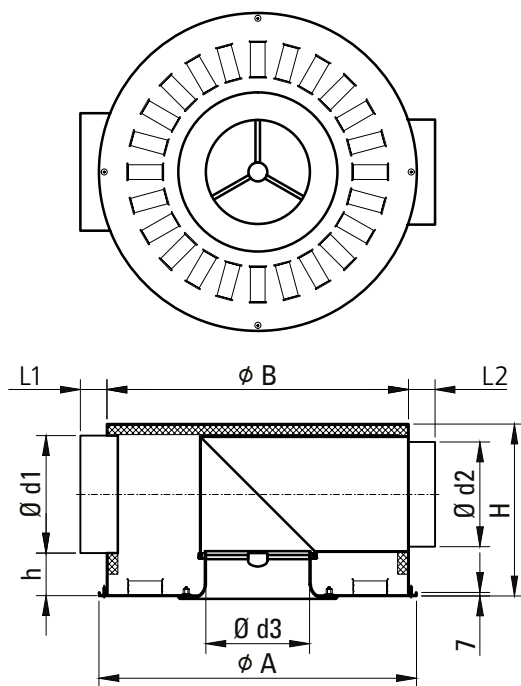


Figure 1. Dimensions, circular diffuser front.

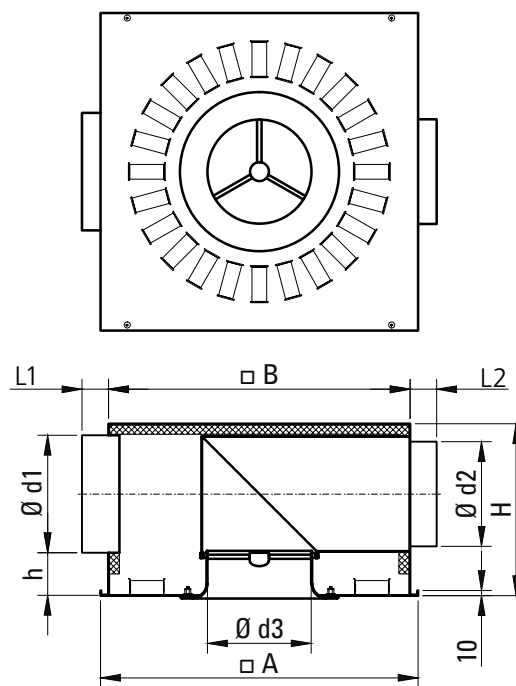
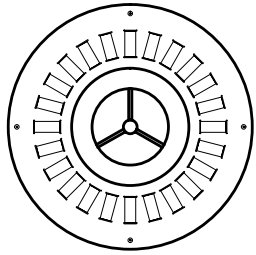
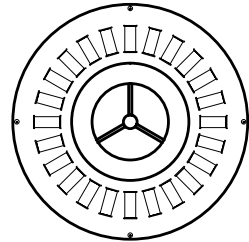
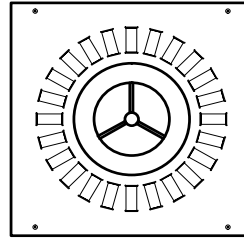


Figure 2. Dimensions, square diffuser front.

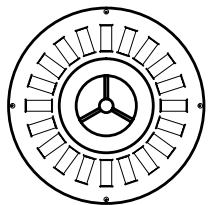
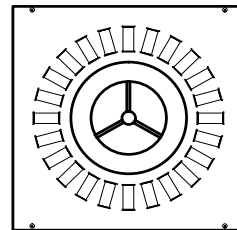
Diffuser face and sizes



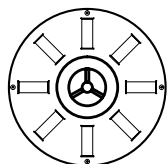
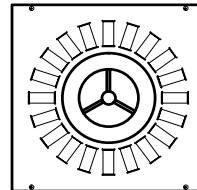
Size 620/625



Size 600



Size 500



Size 400

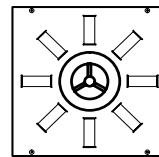


Figure 3. Circular diffuser front.

Figure 4. Square diffuser front.

Specification

For ordering, contact your local Swegon sales office.

Specification text

Combined supply- and extract air ceiling diffuser with the following features:

- Circular or square design.
- Supply air is distributed through adjustable air deflectors.
- Extract air is removed via the centrally positioned control valve.
- Plenum box made of galvanised steel, with internal insulation and two spigots (supply- and extract air).
- Diffuser face made of galvanised steel with control valve made of aluminium, painted white (RAL 9003).
- Air deflectors made of extruded aluminium. Slat holders made of stainless steel. Standard colour black.