

Installation Detail

If your proposed installation details differ from that shown here, please discuss this with the authority having jurisdiction, referencing this documentation.

Deviation from this drawing requires approval of the relevant authority.

Connecting ductwork omitted for clarity. Ductwork must be independently supported. There must be an appropriate break-away joint between the damper and the connecting ductwork on both sides of the installation.

A minimum of 200mm between fire dampers installed in separate ducts and 75mm between fire damper and construction elements/edges needs to be observed unless otherwise specified in the drawing.



SCAN ME

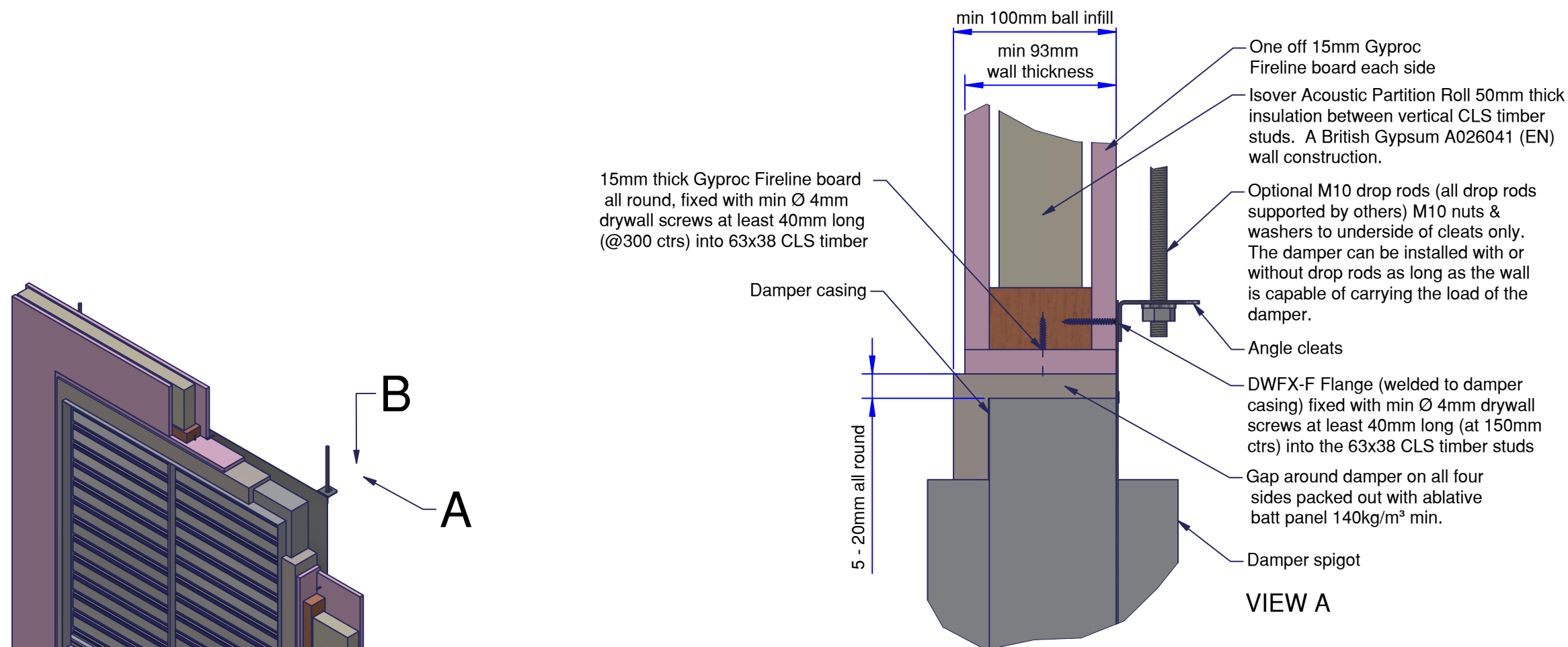
Please refer to the DoP for latest classifications for CE/UKCA compliance and the Installation, Operation and Maintenance Guide

A British Gypsum A026041 (EN) system.

B	ECN3025	MJB	23-04-26
A	ECN3016	MJB	18-02-26
Rev:	Comments:	By:	Date:
Drawn By:	M. Bushell	Date:	20/01/2026
Checked By:	A. Hill	Date:	23/04/2026
Approved By:	S. Gore	Date:	23/04/2026

Description:
VERTICAL APPLICATION
SMOKE SHIELD DWFX-F IN
TIMBER STUD PLASTERBOARD
WALL
 Damper Size Range (mm)
 200 x 200 to 1000 x 1000

Reference No:	Sheet	Rev
AAF13752	1 of 1	B



The penetration seal is to be finished with an ablative coating that is compatible with the make of Fire Batt used. Please refer to the specific ablative coating instruction for guidance on application.

