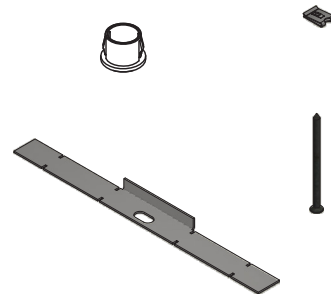


FLOWBAR-Fixings List

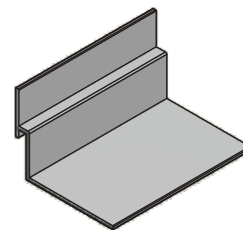
F6 (Kit)

Concealed fastener bracket kit. Used to fix flowbar diffuser to plenum. Engineered slots on the legs allow for a 'flat foot bracket' for diffuser installation against a pattice where no plenum is being installed.



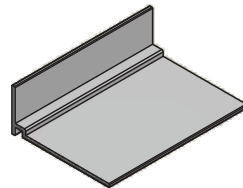
H3

Hard ceiling clip for installation in a hard ceiling with a 12.5mm plasterboard.



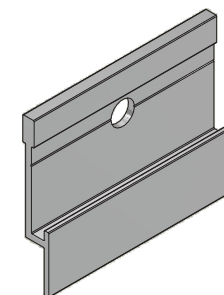
H2

Hard ceiling clip for installation in a hard ceiling with a 25mm plasterboard.



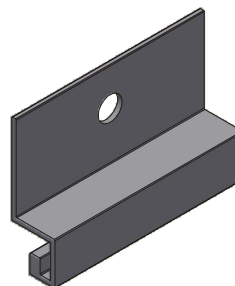
USH

Upper support hanger for use in suspended applications such as suspended ceilings and exposed services application.



WC3

Wall clip for installation of type 11/ 55 to be hard fixed against a vertical wall.



SS1

Alignment plate for multiple flowbar sections to be joined in a continuous run. Plate should be fitted loose to allow for thermal expansion in type 22/55 plaster frame installation, holes allow for solid fixing in type 66/11 installation.

Secondary application: SS1 can be folded to 90 degrees to allow alignment & fixing with a suspended ceiling.

