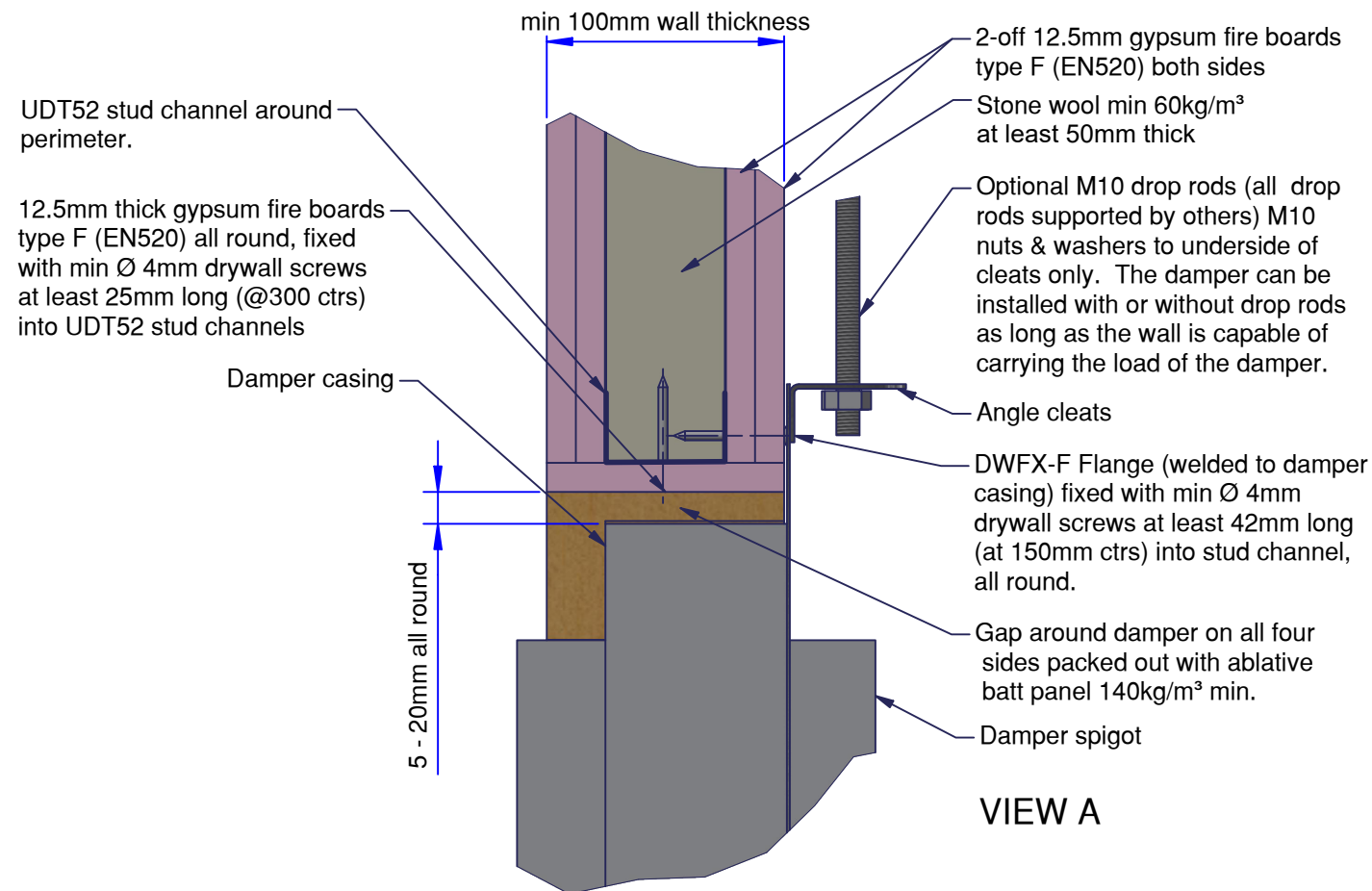
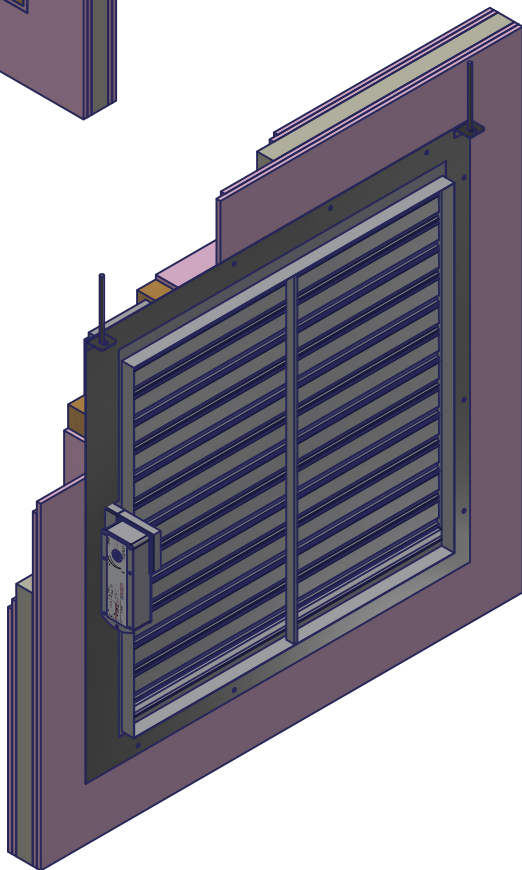
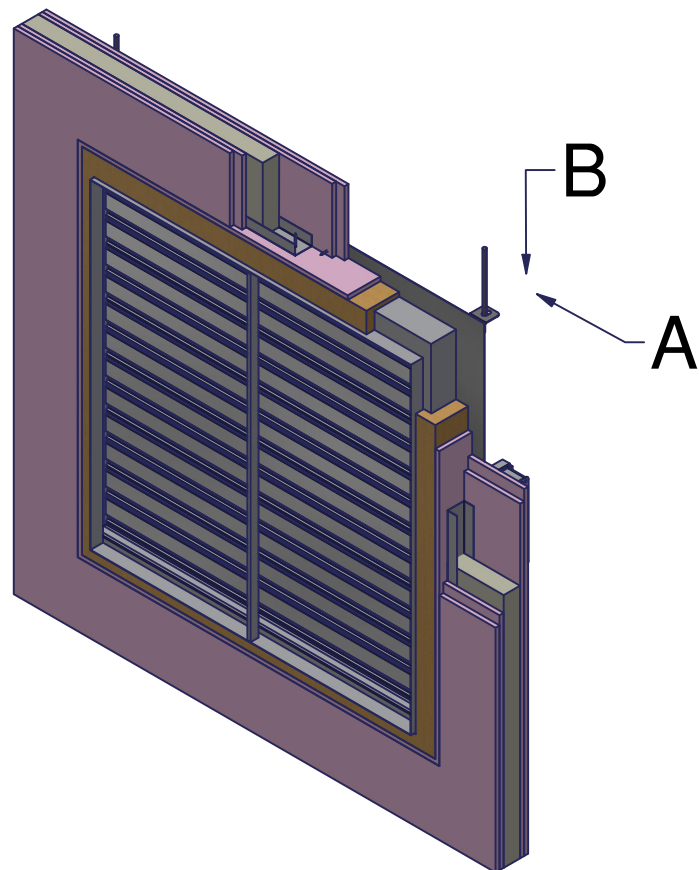
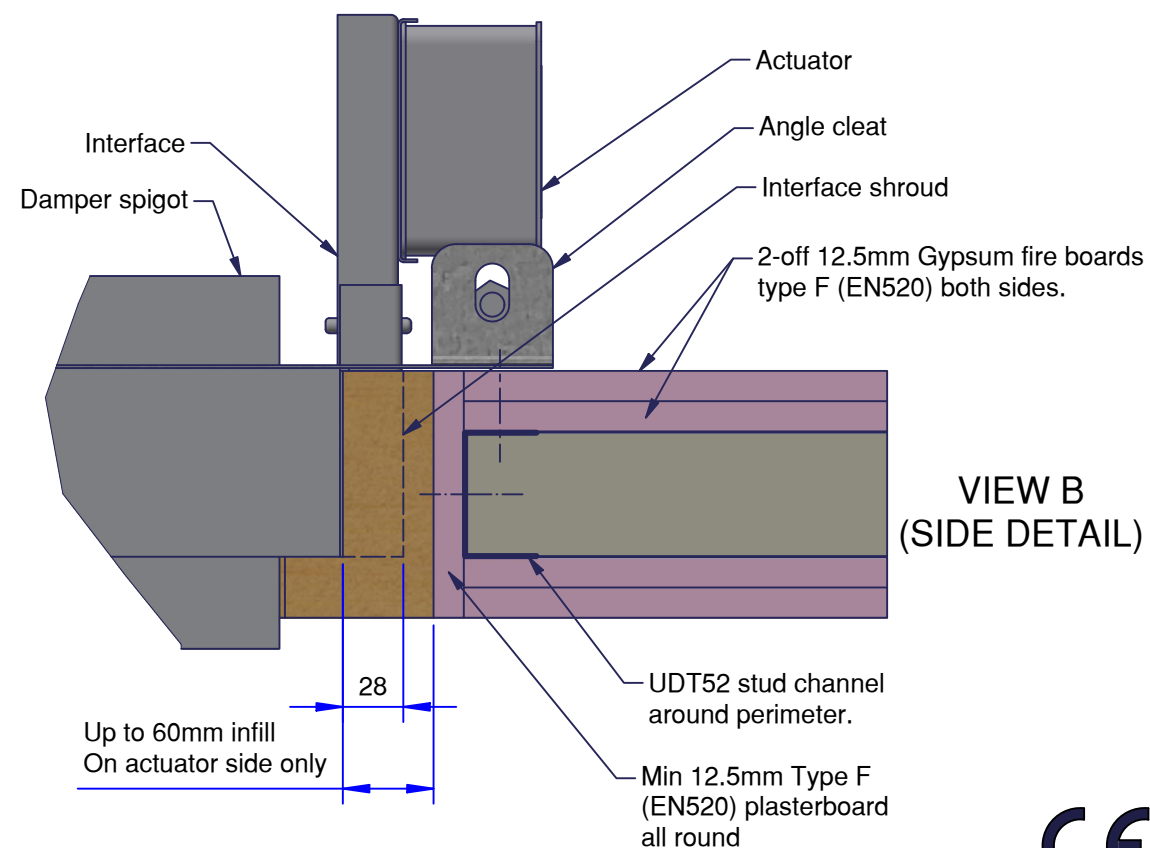




**VERTICAL BLADES;**  
Damper can be installed with the blades in the vertical orientation with the actuator mounted at either the top or bottom. For cleat locations of motors mounted on top refer to drawing AA-SS-2005 and for motors mounted on the bottom refer to drawing AA-SS-2006.



The penetration seal is to be finished with an ablative coating that is compatible with the make of Fire Batt used. Please refer to the specific ablative coating instruction for guidance on application.



## Installation Detail

If your proposed installation details differ from that shown here, please discuss this with the authority having jurisdiction, referencing this documentation.

Deviation from this drawing requires approval of the relevant authority.

Connecting ductwork omitted for clarity. Ductwork must be independently supported. There must be an appropriate break-away joint between the damper and the connecting ductwork on both sides of the installation.

A minimum of 200mm between fire dampers installed in separate ducts and 75mm between fire damper and construction elements/edges needs to be observed unless otherwise specified in the drawing.



**SCAN ME**

Please refer to the DoP for latest classifications for CE/UKCA compliance and the Installation, Operation and Maintenance Guide

A	ECN3006	MJB	13-11-25
Rev:	Comments:	By:	Date:
Drawn By:	M. Bushell	Date:	23/07/2025
Checked By:	S. Gore	Date:	12/11/2025
Approved By:	A. Hill	Date:	12/11/2025

Description:

**VERTICAL APPLICATION  
SMOKE SHIELD DWFX-F IN  
PLASTERBOARD WALL**

Damper Size Range (mm)  
200 x 200 to 1000 x 1000

Reference No:	Sheet	Rev
AAF13703	1 of 1	A

