

# ACTUATOR<sub>c</sub> 0-10V

Installation - Commissioning

2024/09/25  
Art. 942428066

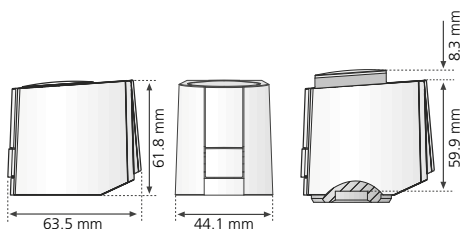
## ACTUATOR<sub>c</sub> 0-10 V NC 24 V AC/DC

### Technical data - Valve actuator

Voltage	24 V AC/DC, -20 % ... +20 %,	
Control voltage range	0 V... 10 V (reverse polarity protected)	
Max. inrush current	< 320 mA for max. 2 min.	
Power rating, start-up:	6 VA for a maximum of 2 minutes	
Power rating, operation:	1 VA	
Resistance of control voltage input	100 kΩ	
Stroke	6.5 mm (minus 0.5 mm over-elevation)	
Actuation force	125 N +5 %	
Fluid temperature	0 °C to +100 °C <sup>1)</sup>	
Storage temperature	-25 °C to +65 °C	
Ambient temperature	0 °C to +60 °C	
Degree of protection	IP 54 <sup>2)</sup>	
Protection class	III	
CE conformity according to	EN 60730	
Casing	Material	Polyamide
	Colour	White
Connection line (Halogen-free)	Type	3 x 0.22 mm <sup>2</sup> PVC
	Colour	White
	Length	1 m
Weight with connection cable (1 m)	111 g	
Overvoltage strength according to EN 60730-1	1 kV	

1) or higher, depending on the adapter  
2) in all installation positions

### Dimensions



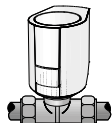
# ACTUATOR c 0-10V

## Installation with valve adapter

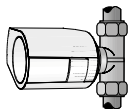
The valve adapter assortment guarantees a perfect match of the actuator to almost all valve bottoms and heating circuit distributors available on the market. The Actuator is simply plugged on to the valve adapter previously installed manually.

## Installation position

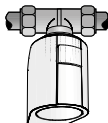
The Actuator must be installed preferably in vertical or horizontal installation position. In case of "overhead" installation, special circumstances (e. g. drainwater) can reduce the lifetime of the actuator.



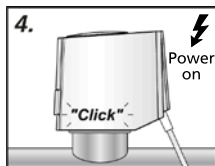
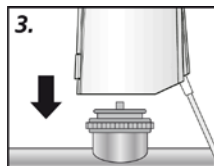
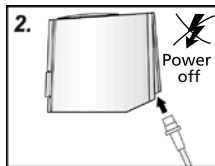
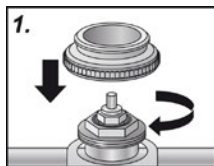
A: vertical



B: horizontal



C: "overhead"



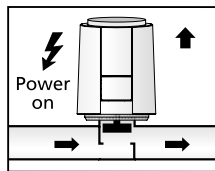
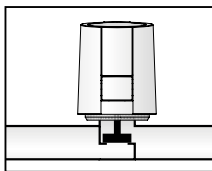
1. Screw the valve adapter manually onto the valve.
2. Connect the line to the actuator.
3. Position the Actuator manually in vertical position to the valve adapter.
4. Latch the Actuator to the valve adapter by manually applied vertical pressure until a clicking sound is heard.

## Function display

The function display (all around display) of the actuator shows at the first glance whether the valve is open or closed; this can also be felt in the dark.

## For the version NC:

Normally closed extracts the function display when the valve opens.



## "First Open" function (for NC variants only)

In its delivery condition, the Actuator is normally open due to the "First Open" function. This enables heating operation during the carcass construction phase even when the electric wiring of the room-by-room temperature control is not yet complete. When commissioning the system at a later date, the "First Open" function is automatically unlocked by applying the operating voltage (for more than 6 minutes) and the actuator is fully operable.

## Electric connection

