

# Operating and Maintenance

- VA** Supply valve with spindle locknut
- VB** Exhaust valves with spindle locknut
- VC** Exhaust valve with tamper proof screw locking of inner core



VA



VC



VB

## Supply and Exhaust Valves

VA / VB / VC

### Product Description

- VA** Supply valve with spindle locknut
- VB** Exhaust valves with spindle locknut
- VC** Exhaust valve with tamper proof screw locking of inner core

### Material:

Powder coated steel

### Operation

The central cone rotates to allow for the correct air flow, this will need to be confirmed with a Balometer and hood or a similar piece of equipment, or a pitot traverse of the duct.

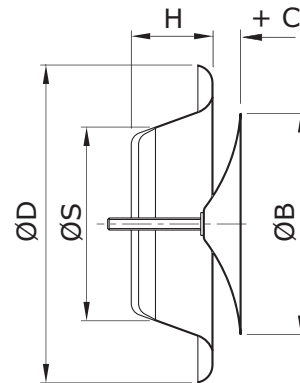
### Maintenance

No maintenance is required

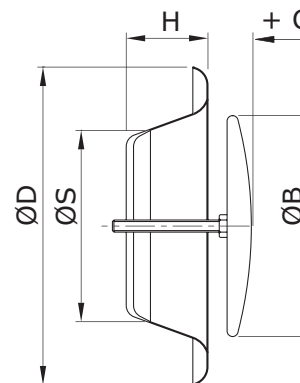
### Care

Care must be taken not to damage the powder coating to avoid corrosion in the future.

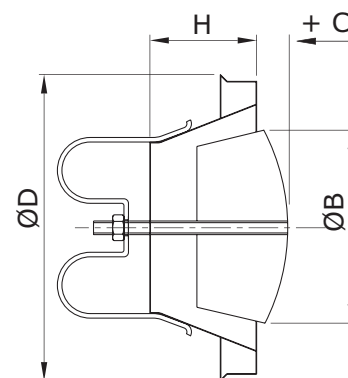
Cleaning is to be undertaken with a mild non-abrasive detergent used sparingly.



Supply Valve VA/F



Exhaust Valve VB/F



Exhaust Valve VC  
C - Core adjustment

# Waterloo Product Range

## Waterloo Product Range

### GRILLES

A complete range of products suitable for all wall, ceiling and floor applications. Most grilles are made from aluminium and have a range of fixed or moveable blades designed to give performance whilst remaining aesthetically pleasing to the eye. Grilles are made to customer specified sizes and colours (PPM/G); standard colour PPM9010 (20% Gloss White). The range is complemented by the Aircell range of polymer Grilles.



### DIFFUSERS

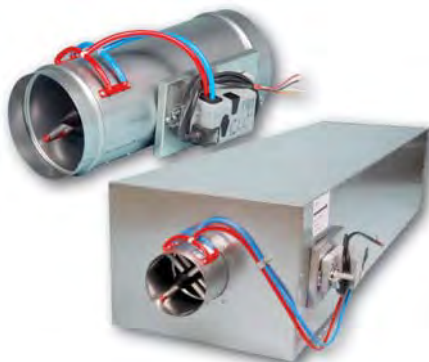
Designed to be installed in various ceiling systems, we have a complete range to suit both performance and aesthetical requirements. Most diffusers are made from aluminium and can be ordered with or without plenum boxes for easy duct work. Diffusers can be ordered in customer specified colours (PPM/G); standard colour is PPM 9010 (20% Gloss White). This range is complemented by the Aircell range of polymer Diffusers.



### ACTIVE AND PASSIVE CHILLED BEAMS

The finest quality range of high output active beams, used for ventilated heating and cooling applications. These units have 4 pipe coils to allow heating and cooling circuits to run simultaneously, giving constant and responsive control. The design allows a large optimum capacity and also allows the customer to specify the nozzle type and pitch for individual circumstances.

Active beams are made from steel to a large range of customer specified sizes and as such are suitable for various different ceiling systems. Standard finish is PPM 9010, however other (PPM/G) colours are available on request.



### AIR VOLUME CONTROL DAMPERS

Pressure independent Variable Air Volume and Constant Air Volume dampers made from zintec plate. Most volume dampers are regulated with an electronic motor and sensors and are calibrated to customer specifications before delivery.

The Constant Air Volume damper requires no power source as it is controlled via a mechanical device and calibrated before delivery. All volume dampers can be ordered with a single or double (insulation) skin.



### EXTERNAL LOUVRES

A quality range of products for external wall applications. Made from aluminium, with birdscreen or insect screen options. All louvres are made to customer specified sizes and (PPM/G) colours; standard colour is PPM 9006.



### DISPLACEMENT

A full range of recessed, semi-recessed, floor, wall and corner units providing high ventilation efficiency and excellent comfort. The very low pressure involved also offer quiet installations. Displacement units are available as wall or floor mounted, or indeed integrated within the architectural design.



## Waterloo Air Products Ltd

### Head Office:

Mills Road, Aylesford,  
Maidstone, Kent ME20 7NB  
Tel: +44 (0)1622 711 500  
Fax: +44 (0)1622 710 648  
email: [sales@waterloo.co.uk](mailto:sales@waterloo.co.uk)  
internet: [www.waterloo.co.uk](http://www.waterloo.co.uk)

### Northern Office:

Hyde Park House, Cartwright Street,  
Newton, Hyde SK14 4EH  
Tel: +44 (0)161 367 1264  
Fax: +44 (0)161 367 1262  
email: [sales@waterloo.co.uk](mailto:sales@waterloo.co.uk)  
internet: [www.waterloo.co.uk](http://www.waterloo.co.uk)



FM 27823



EMS 590755

All products conform to the Terms and Conditions of Waterloo Air Products Ltd a copy of which are available upon request. Due to our continuous research and development programme, Waterloo Air Products Ltd reserve the right to alter products and prices without prior notification.

Copyright Waterloo Air Products Ltd 2018

Waterloo declare that, at the time of print, all products are in accordance with relevant directives, as identified by HEVAC and other European Organisations and will display the CE Marking where required.