

Plenum Box to suit MC / WR / LCT20 Diffusers

PBR

Introduction

PBR plenum boxes are designed to guarantee a good mixing of the air prior to diffusion through the terminals. Available with Side Entry connections matching the diffuser neck (nominal size), these can be fitted with Spigot Flap Dampers, cord- / quadrant-operated, as well as 6mm acoustic lining (optional) reaction to fire class C-s3-d0 to EN 13501-1: 2007 to avoid noise generation.

Product Description

PBR Side Entry plenum box to suit MC / WR / LCT20 Diffusers

FDC Cord-operated Flap Damper (optional)

FDQ Quadrant-operated Flap Damper (optional)

LINED 6mm acoustic lining (optional) reaction to fire class C-s3-d0 to EN 13501-1: 2007

BLACK Plenum painted black to prevent through vision (optional)

Features

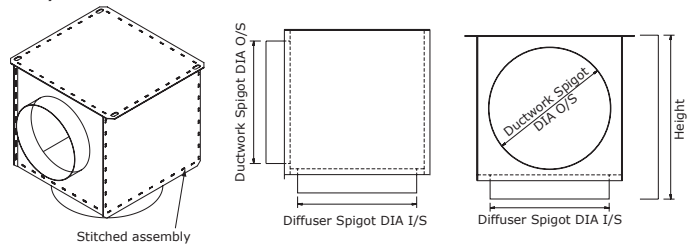
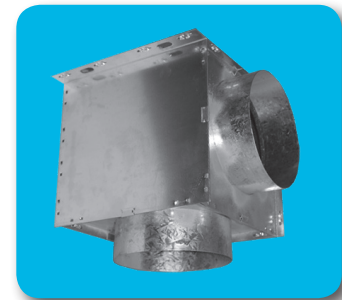
- Galvanised steel, stitch fixed
- Side Entry spigot with optional airflow control damper
- Oblong holes on top plate for easy drop rod installation

Finish

PBR Galvanised sheet steel

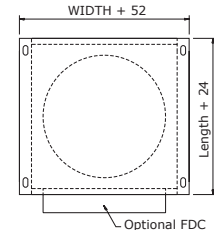
Diffuser					Diffuser Spigot	Ductwork Spigot
Type	Size	Width	Length	Height		
WR	6	200	200	200	Ø152	Ø147
WR	8	250	250	250	Ø203	Ø197
WR	10	300	300	300	Ø254	Ø247
WR	12	350	350	350	Ø305	Ø297
WR	15	430	430	430	Ø381	Ø337
WR	18	500	500	500	Ø457	Ø447
WR	21	580	580	580	Ø534	Ø527
WR	24	660	660	660	Ø610	Ø603
MC	150	200	200	200	Ø147	Ø147
MC	200	250	250	250	Ø197	Ø197
MC	300	350	350	350	Ø297	Ø297
MC	450	500	500	500	Ø447	Ø447
LCT20	370	210	210	210	Ø157	Ø157 *
LCT20	450	250	250	250	Ø197	Ø197 *
LCT20	600	300	300	300	Ø247	Ø247 *

* Larger sizes are permitted.



ORDER EXAMPLE

PBR/300/1CC/SE/297dia/FCD/Lined
 Type _____
 Diffuser size _____
 Spigot connections _____
 Entry _____
 Spigot size _____
 Option _____
 Option _____



Note: The connection between the diffuser and plenum is adequately sealed for most installations, although secondary additional sealing may be required at the discretion of the installers, if the leakage rate required is particularly low.

Plenum Box to suit SDV Vane Swirl Diffusers

SDVP

Introduction

Plenum boxes for our SDVP vane swirl diffusers are designed to guarantee a good mixing of the air prior to diffusion through the terminals. Available with Side or Top Entry connections to customer-specific diameters, these can be fitted with Spigot Flap Dampers, cord- /quadrant-operated, as well as 6mm acoustic lining (optional) reaction to fire class C-s3-d0 to EN 13501-1: 2007 to avoid noise generation.

The Supply air plenum box includes an internal baffle plate to evenly distribute the airflow over the swirl area.

Product Description

SDVP Plenum box to suit SDV Vane Swirl Diffusers

SE Side Entry spigot

TE Top Entry spigot

FDC Cord-operated Flap Damper (optional)

FDQ Quadrant-operated Flap Damper (optional)

LINED 6mm acoustic lining (optional) reaction to fire class C-s3-d0 to EN 13501-1: 2007

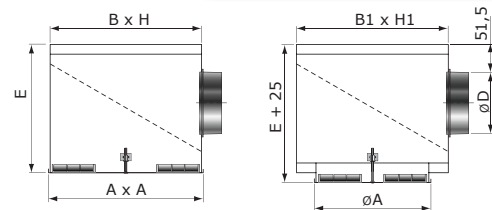
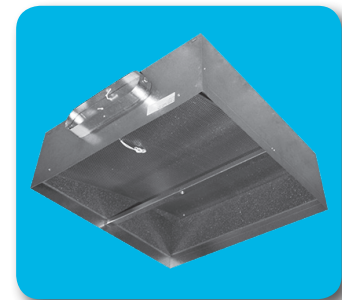
BLACK Plenum painted black to prevent through vision (optional)

Features

- Galvanised steel, stitch fixed
- Side or Top Entry spigot with optional airflow control damper
- Oblong holes on top plate for easy drop rod installation
- Internal baffle plate for Supply air diffuser

Finish

SDVP Galvanised sheet steel



SDVS SDVC	Number of vanes	A x A	Ø A	B x H	B1 x H1	Nom. Ø D	E
300	8	295x295	300	290x290	390x390	160	290
400	16	395x395	400	390x390	490x490	200	330
500	16 / 24	495x495	500	490x490	590x590	200	330
600	16	595x595	600	590x590	690x690	200	330
600	24/40/48	595x595	600	590x590	690x690	250	380
625	16	620x620	625	615x615	690x690	200	330
625	24/40/48	620x620	625	615x615	690x690	250	380
800	64/72	795x795	800	790x790	890x890	315	450
825	64/72	820x820	825	815x815	890x890	315	450

Note: The connection between the diffuser and plenum is adequately sealed for most installations, although secondary additional sealing may be required at the discretion of the installers, if the leakage rate required is particularly low.

ORDER EXAMPLE

SDVPS/600/247dia/SE/FDQ/LINED
 Type _____
 Front plate size _____
 Spigot size _____
 Entry _____
 Option _____
 Option _____