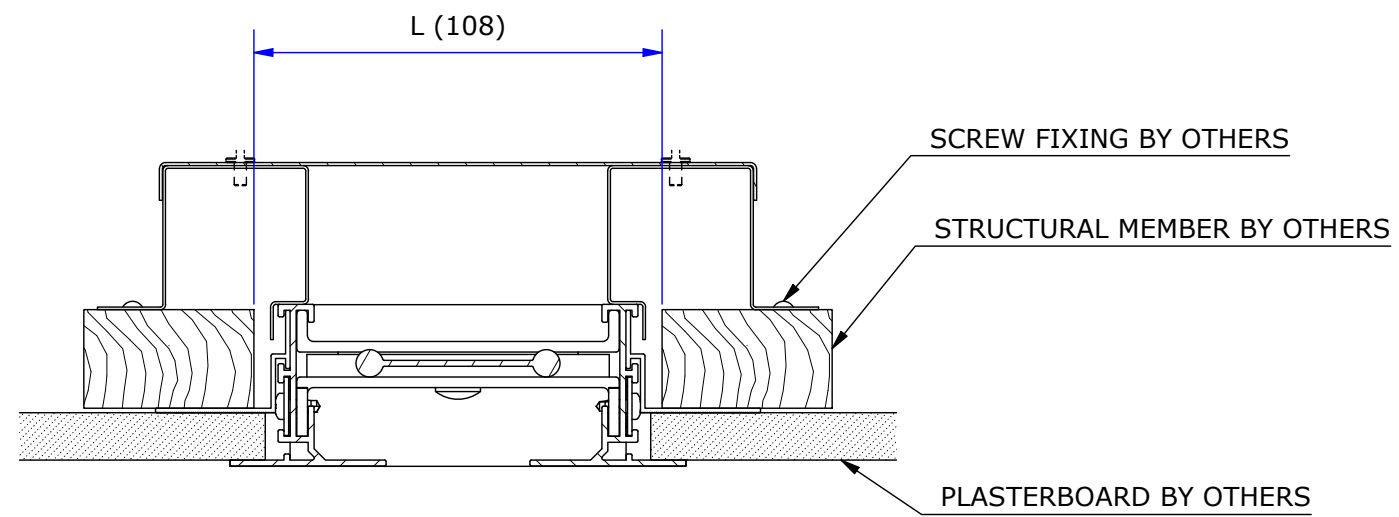
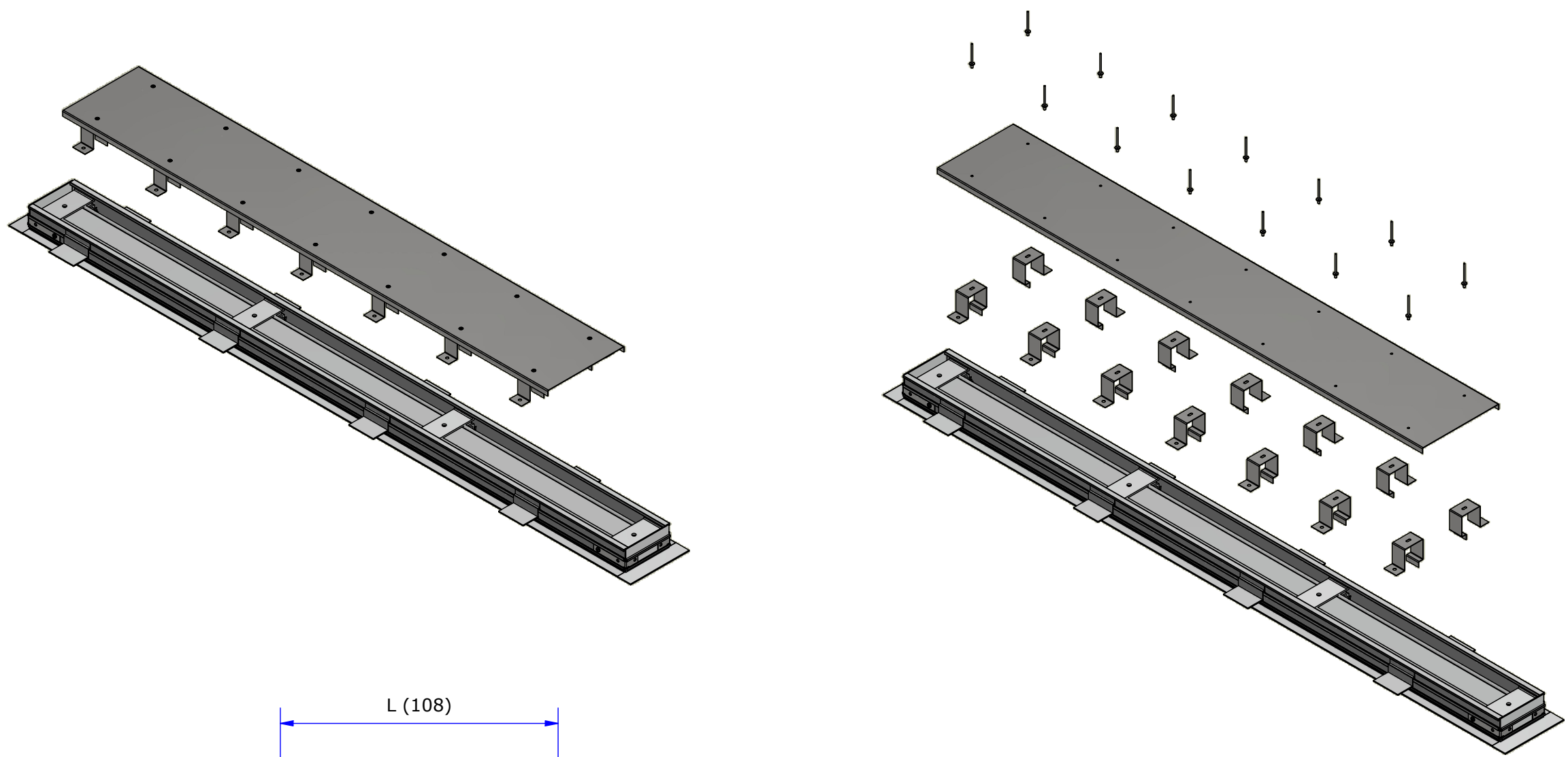
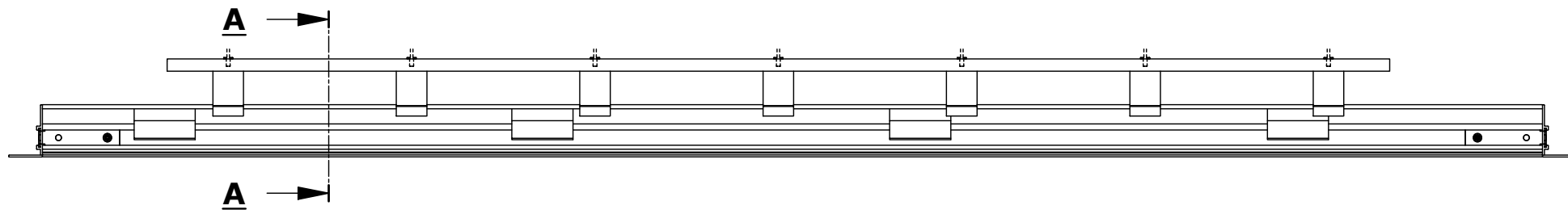


C:\Vault\RUBU Vault\STANDARD PRODUCTS\DIFFUSERS\LINEAR DIFFUSERS\FLOWBAR\LIGHT BAFFLE\W.11.01.41-190.idw



SECTION A-A
(SCALE 1 : 2)



Waterloo Air Products
Unit A Vantage Point, Snodland, Kent ME6 5SL, UK
tel: **+44(0)1634 981400** web: www.swegon.com/uk/

- General Notes:
- DO NOT SCALE - IF IN DOUBT ASK
 - ALL DIMENSIONS IN MILLIMETRES (mm) AND MUST BE CHECKED / APPROVED PRIOR TO MANUFACTURE
 - GENERAL TOLERANCES UNLESS STATED:
O/A FINISHED SIZE: +/- 2.00 mm
0 d.p. (0) +/- 1.00 mm
1 d.p. (0.0) +/- 0.50 mm
2 d.p. (0.00) +/- 0.25 mm
 - QUANTITY AND FINISH AS PER SALES ORDER

- Drawing / Design Notes:
1. ASSEMBLE LIGHT BAFFLE & BRACKETS
 2. SUPPORT BRACKET SUPPLIED IN PACKS OF 10 FOR BREAKOUT ON SITE.
 3. CUT TO REQUIRED LENGTH
 4. PLACE OVER FLOWBAR
 5. SECURE TO STRUCTURAL MEMBER

APPROVED BY	SIGNED	DATE
ENGINEERING	J.Jones	24/01/24

Title: **LIGHT BAFFLE INSTALLATION**

Part:

Client: **WATERLOO BY SWEGON**

Project: **DIFFUSERS**

Project# | Quote#:
FLOWBAR

Status: **APPROVED**

 THIRD ANGLE	Drawn By: N. Harris		
	Date Drawn: 06/05/2022		
	Checked By: S. Fritter		
	Date Checked: 03/11/2023		
Scale / Sheet: 1 : 5 @ A3	Drawing Number: W.11.01.41-190	Rev: 0	Sheet: 1 of 2

STAGE 1: ASSEMBLY LIGHT BAFFLE

- BREAKOUT SUPPORT LEGS FROM PACK OF 10.
- RIVET SUPPORT LEGS TO LIGHT BAFFLE PLATE WITH SUPPLIED RIVET.

STAGE 2: CUT LIGHT BAFFLE TO REQUIRED LENGTH

- CUT THE LIGHT BAFFLE TO THE REQUIRED LENGTH.
- RECYCLE ANY OFF CUTS (GALVANISED STEEL).

STAGE 3: FIT AND SECURE LIGHT BAFFLE

- ALIGN SUPPORT LEGS OVER BACK OF THE FLOWBAR.
- SECURE THE SUPPORT LEGS TO THE STRUCTURAL MEMBER

WATERLOO
by Swegon

Waterloo Air Products
Unit A Vantage Point, Snodland, Kent ME6 5SL, UK
tel: +44(0)1634 981400 web: www.swegon.com/uk/

General Notes:

- DO NOT SCALE - IF IN DOUBT ASK
- ALL DIMENSIONS IN MILLIMETRES (mm) AND MUST BE CHECKED / APPROVED PRIOR TO MANUFACTURE
- GENERAL TOLERANCES UNLESS STATED:
O/A FINISHED SIZE: +/- 2.00 mm
0 d.p. (0) +/- 1.00 mm
1 d.p. (0.0) +/- 0.50 mm
2 d.p. (0.00) +/- 0.25 mm
- QUANTITY AND FINISH AS PER SALES ORDER

Drawing / Design Notes:

- ASSEMBLE LIGHT BAFFLE & BRACKETS
- SUPPORT BRACKET SUPPLIED IN PACKS OF 10 FOR BREAKOUT ON SITE.
- CUT TO REQUIRED LENGTH
- PLACE OVER FLOWBAR
- SECURE TO STRUCTURAL MEMBER

Title: LIGHT BAFFLE INSTALLATION

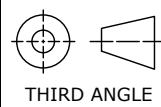
Part:

Client: WATERLOO BY SWEGON

Project: DIFFUSERS

Project# | Quote#: FLOWBAR

Status: APPROVED



THIRD ANGLE

Drawn By: N. Harris

Date Drawn: 06/05/2022

Checked By: S. Fritter

Scale / Sheet:

1 : 7.5 @ A3

Date Checked: 03/11/2023

Drawing Number: W.11.01.41-190

Rev: 0

Sheet: 2 of 2