

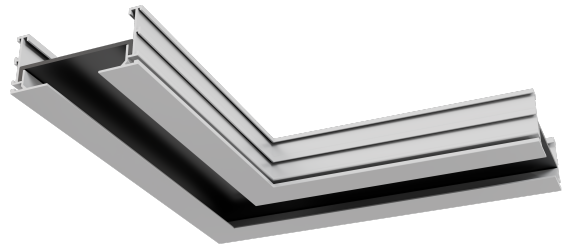
# FLOWBAR-MT

Architectural High Capacity Linear Slot Diffuser Mitred Corner



## QUICK FACTS

- High capacity single slot diffuser corner section available in 5 slot widths of 25mm, 38mm, 51mm, 63mm & 76mm
- Integrates into a variety of ceiling & wall types
- 3 configurations & 5 slot widths
- Mounting – Ceiling/Bulkhead/Sidewall/Recessed
- Corner section to maintain continuous effect
- Bespoke angles
- Heavy wall extruded aluminium construction.



# Contents

**Technical description.....3**

Design.....3

Materials and surface treatment.....3

Model Types.....3

Accessories.....3

Installation.....3

Maintenance.....3

Environment.....3

**Dimensions .....3**

CeilingCorner .....4

Internal Wall Corner .....4

External Wall Corner .....4

**Order key.....5**

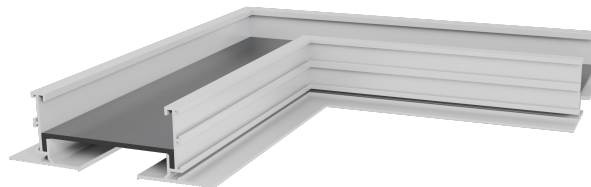
# Technical Description

## Design

FlowBar is an architecturally designed high capacity linear slot diffuser. It is designed to combine a high air handling capacity with maximum flexibility and is suitable for ceiling application. The flexibility of the system can blend into a design or provide contrast with its striking but simple design.

FlowBar is a flexible system that can provide straight lines or curves to blend with other architectural elements and enhance the overall concept of the project.

The FlowBar systems satisfy both the Architects and Engineer's requirements for designing an air distribution system that will maintain optimum room air conditions whilst being efficient yet inconspicuous.



## Material and Surface Treatment

Manufactured from heavy wall extruded aluminium

### Type 66

As Standard frame are polyester powder coated to RAL9010 – Matt (20%) finish to external frame surfaces. Polyester powder coated to RAL9005 matt (30%) finish to Internal surfaces.

Alternative standard RAL colours to select from:

- RAL 9016 Matt (20%) finish - White
- RAL 9003 Matt (40%) finish - White
- RAL 9006 Matt (40%) finish - Silver
- RAL 9005 Matt (30%) finish - Black

### Type 22, 55 & 11

As standard frames are Polyester powder coated to RAL9005 matt (30%) finish to all surfaces. Other colours available to special order.



## Installation

For our range of fixing details, please see our installation, operation & maintenance manual.

## Maintenance

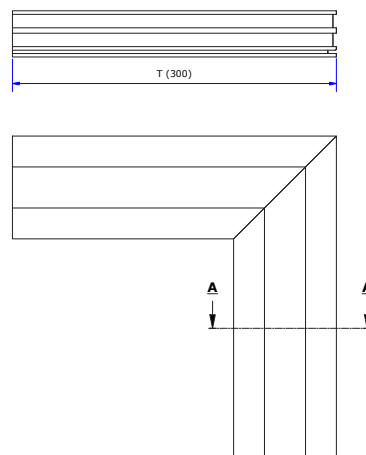
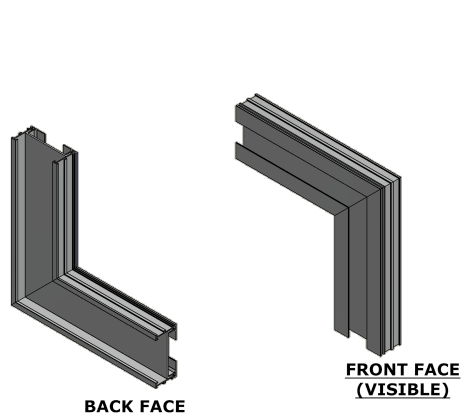
For maintenance guidelines please see our installation, operation & maintenance manual.

## Environment

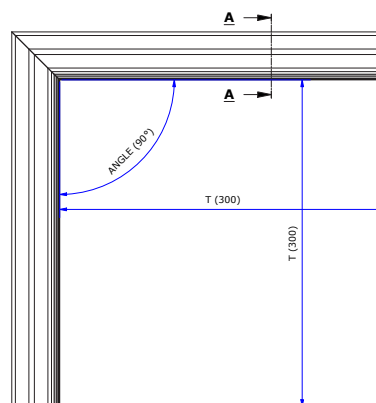
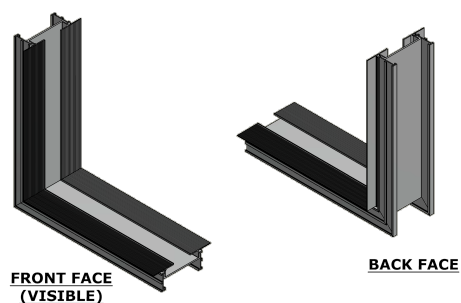
Our standard power coating process is suitable for a C3 Internal environment classification, ISO 12944-2. Design life 15 - 25 years.

# Dimensions

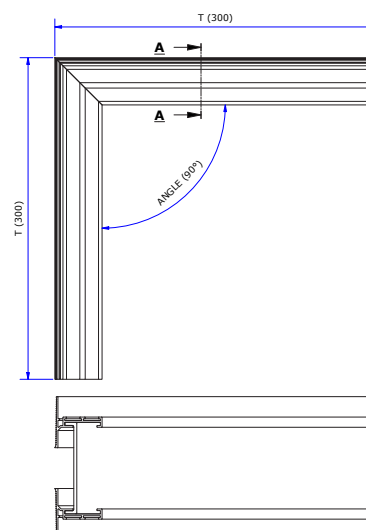
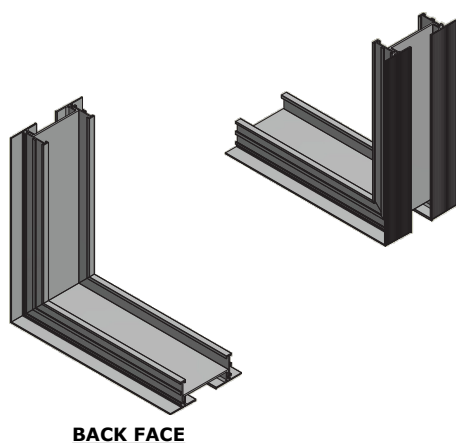
## Ceiling Corner



## Internal Wall Corner



## External Wall Corner



# Order Key

Composite Reference: FLOWBAR MT/22/HT/20/H3/C/90DEG/STD/9005/9005

## Diffuser Order Key

Order example :

FLOWBAR MT

1 2 3 4 5 6 7 8 9

22	HT	20	H3	C	90 DEG	STD	9005	9005
<b>Frame Type:</b>								
11	Narrow Frame border							
22	Shallow Plaster frame border							
55	Deep plaster frame border							
66	Surface Mounted frame border							
Model:								
HT	High Throw							
JT	Jet Throw							
<b>Width:</b>								
FL-10	25mm slot							
FL-15	38mm slot							
FL-20	51mm slot							
<b>FL-25</b>	63mm slot							
FL-30	76mm slot							
Diffuser Fixing method:								
H2	Hard Ceiling Clip							
H3	Hard Ceiling Clip							
USH	Upper Support Hanger							
<b>WC3</b>	Wall Clip							
Corner type:								
C	Ceiling (HT model)							
I	Internal wall corner (JT model)							
<b>E</b>	External wall corner (JT model)							
Angle:								
50 - 179	50° to 179°							
<b>Length:</b>								
STD	Standard as datasheet							
<b>Frame Finish:</b>								
9010	White RAL 9010 Matt (20%) finish (standard finish type 66)							
<b>9005</b>	Black RAL 9005 Matt (30%) finish (standard Finish Type 22,11,55)							
9006	Silver RAL 9006 Semi-gloss (40%) finish							
9016	White RAL 9016 Matt (20%) finish							
9003	White RAL 9003 Semi-gloss (40%) finish							
SPC	Other colours available to special order							
Blade Finish:								
9005	Black RAL 9005 Matt (30%) finish							
	Other colours available to special order							