

FLOWBAR-C

Architectural High Capacity Linear Slot Diffuser for Curved applications



QUICK FACTS

- High capacity single slot diffuser available in 3 slot widths of 25mm, 38mm, 51mm
- Curved Architectural appearance
- Integrates into a variety of ceiling types
- 3 configurations & 3 slot widths
- High Throw 36 l/s/m - 180 l/s/m
- Mounting – Ceiling
- Modular or Continuous lengths
- Custom curving available to meet designer's requirements
- Heavy wall extruded aluminium construction.



Contents

Technical description.....3

Design.....3

Materials and surface treatment.....3

Model Types.....3

Accessories.....3

Installation.....3

Maintenance.....3

Environment.....3

Model Types4

High Throw Series (HT).....4

Order key.....5

Specification text..... 5

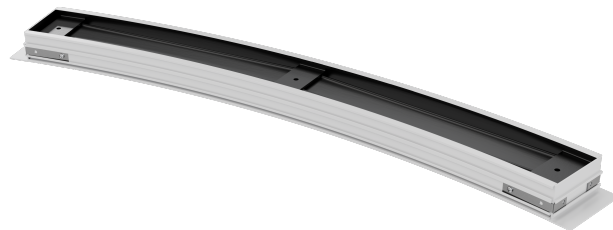
Technical Description

Design

FlowBar is an architecturally designed high capacity linear slot diffuser. It is designed to combine a high air handling capacity with maximum flexibility and is suitable for ceiling application. The flexibility of the system can blend into a design or provide contrast with its striking but simple design.

FlowBar is a flexible system that can provide straight lines or curves to blend with other architectural elements and enhance the overall concept of the project.

The FlowBar systems satisfy both the Architects and Engineer's requirements for designing an air distribution system that will maintain optimum room air conditions whilst being efficient yet inconspicuous



Material and Surface Treatment

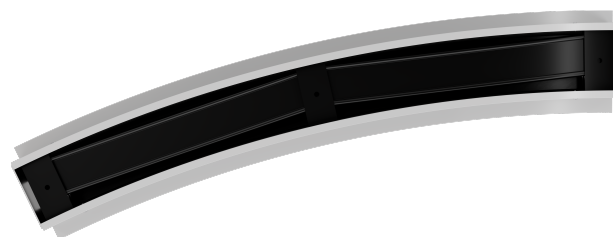
Manufactured from heavy wall extruded aluminium

Type 66

As Standard frame are polyester powder coated to RAL9010 – Matt (20%) finish to external frame surfaces. Polyester powder coated to RAL9005 matt (30%) finish to Internal surfaces.

Alternative standard RAL colours to select from:

- RAL 9016 Matt (20%) finish - White
- RAL 9003 Matt (40%) finish - White
- RAL 9006 Matt (40%) finish - Silver
- RAL 9005 Matt (30%) finish - Black



Type 22 & 11

As standard frames are polyester powder coated to RAL9005 matt (30%) finish to all surfaces. Other colours available to special order.

Installation

For our range of fixing details, please see our installation, operation & maintenance manual.

Maintenance

For maintenance guidelines please see our installation, operation & maintenance manual.

Environment

Our standard power coating process is suitable for a C3 Internal environment classification, ISO 12944-2. Design life 15 - 25 years.



FLOWBAR-C

Model Types

High Throw Series (HT)

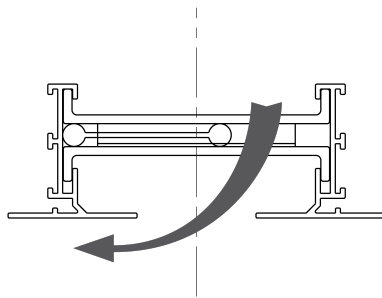
The High Throw series is primarily designed for ceiling applications and allows the air diffuser to become inconspicuous, whilst fully integrating into the ceiling system.

Integral pattern controllers are 600mm in length allowing the airstream to be directed left and right for horizontal and vertical airflow.

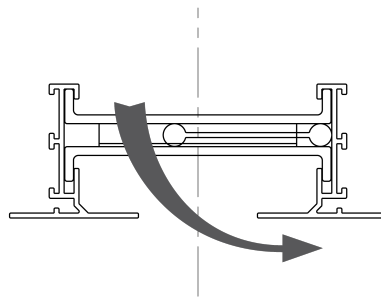
Configurations

- HT-10 / 25mm Slot
- HT-15 / 38mm Slot
- HT-20 / 51mm Slot

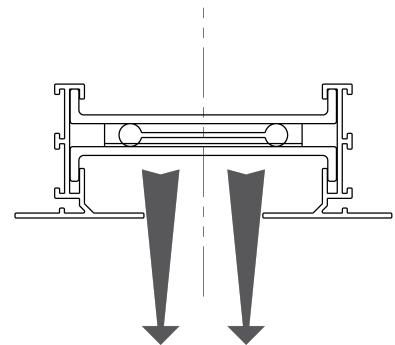
Pattern Controller Setting



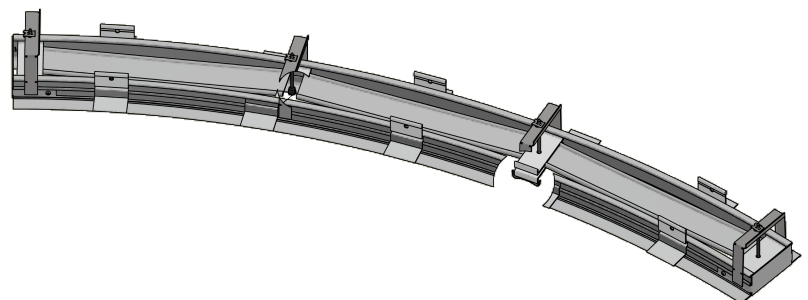
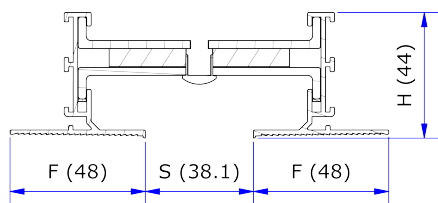
Horizontal Left



Horizontal Right



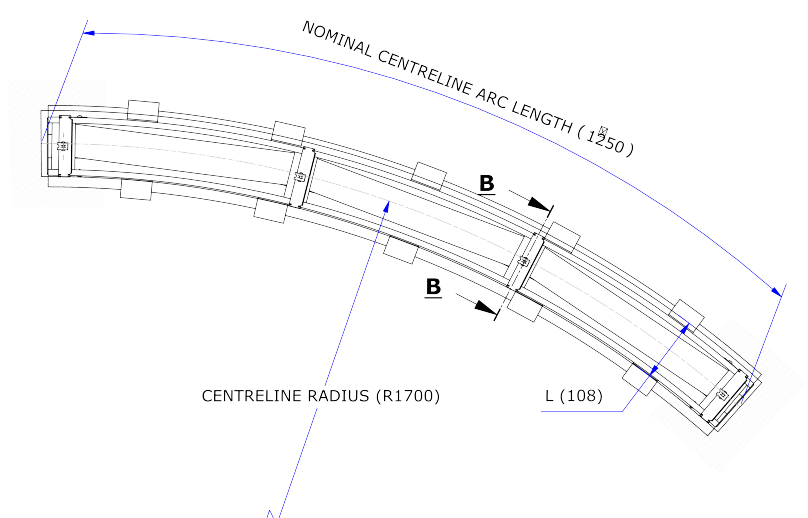
Vertical



HT High Throw - Border 11		
Slot	Width	Min Radius (mm)
FL10	25	800
FL15	38	1200
FL20	51	2100

HT High Throw - Border 22		
Slot	Width	Min Radius (mm)
FL10	25	1700
FL15	38	1700
FL20	51	45000

HT High Throw - Border 66		
Slot	Width	Min Radius (mm)
FL10	25	800
FL15	38	1200
FL20	51	2100



Order Key

Composite Reference: FLOWBAR/22/HT/20/EP2/H3/F6/2400/1200/9005/9005

Diffuser Order Key

Order example:

FLOWBAR-C

1 2 3 4 5 6 7 8 9 10

Frame Type:

11	Narrow Frame border
22	Shallow Plaster frame border
66	Surface Mounted frame border

Model:

HT	High Throw
----	------------

Width:

FL-10	25mm slot
FL-15	38mm slot
FL-20	51mm slot

End Border:

E0	No Ends
E1	End Border One Side (66 only)
E2	End Borders Both Sides (66 only)
EP1	End Plate One Side
EP2	End Plate Both Sides

Diffuser Fixing Method:

H2	Hard Ceiling Clip
H3	Hard Ceiling Clip
WC3	Wall Clip

Plenum Fixing Method:

NF	None
F6	U-Bracket fixing

Centre Line Radius:

Value (mm)	Please see minimum radius
------------	---------------------------

Length:

>500mm	Lengths available in 1mm increments
--------	-------------------------------------

Frame Finish

9010	White RAL 9010 Matt (20%) finish (standard finish type 66)
9005	Black RAL 9005 Matt (30%) finish (standard Finish Type 22,11)
9006	Silver RAL 9006 Matt (40%) finish
9016	White RAL 9016 Matt (20%) finish
9003	White RAL 9003 Matt (40%) finish
SPC	Other colours available to special order

Blade Finish:

9005	Black RAL 9005 Matt (30%) finish
	Other colours available to special order

Specification Text

The FlowBar Curved series is primarily designed for ceiling applications and allows the air diffuser to become inconspicuous, whilst fully integrating into the ceiling system.

The Flowbar systems satisfy both architectural and engineering requirements for designing an air distribution system that will maintain optimum room air conditions whilst being an integral component of the architectural concept of the project.

Integral pattern controllers are 600mm in length allowing the airstream to be directed left and right for horizontal and vertical airflow.

Standard slot sizes are 25mm, 38mm and 51mm with single section lengths available up to 2400mm.

Frame styles 66, 22 and 11 flangeless are available.

Factory engineered plenum boxes are supplied to ensure a trouble free installation and to ensure published performance data is met. Plenums not provided by Waterloo may demonstrate performance variations.

Heavy wall extruded aluminium construction
Aerodynamic testing carried out in general accordance to BS EN 12238:2001 (Ventilation for buildings - Air terminal devices - Aerodynamic testing and rating for mixed flow applications).

Acoustic testing carried out in general accordance to BS EN ISO 5135:1999 acoustics. Determination of sound power levels of noise from air-terminal devices, air-terminal units, dampers and valves by measurement in a reverberation room.