

SD5

Installation - Maintenance

Health & Safety

Symbols in this user manual

Warning/Caution!



General

Please read this manual carefully in advance and make it accessible to all persons involved in a suitable and appropriate place. We point out that not observing the instructions in this document may affect the warranty.

It is not permissible to make changes or modify this product other than those specified in this document.

Personnel

Work should be carried out by a competent person.

PPE



Appropriate personal protective equipment should be used. All operatives should follow guidance for the specific building site. We recommend the following: Safety shoes or boots, work gloves, eye protection, helmet, high viz clothing, hearing protection, face mask.

Handling and Storage

No special precautions are required when handling air diffusers, but they should always be treated with care. The products do not fall within the scope of COSHH regulations. Diffusers should be stored in a dry ambient location and protected from dust & impact damage.

Maintenance

These are static units without moving parts therefore maintenance is confined to cleaning.

To remove significant amounts of lint etc from the unit a vacuum cleaner with a soft brush head may be used.

Powder coated surfaces should be washed with a warm water solution of mild detergent or suitable proprietary cleaning agent.

Abrasive cleaners or those containing ketones, esters, acids, alkali or alcohol should not be used.

Installation

SD5/S installation with SDVPS plenum

Items 2,3 & 4 supplied loose for site assembly

- Fix the diffuser using the supplied central fixing bolt (3) & plastic washer (2) to the plenum crossbar (figure 2)
- The diffuser face will vary for the different suspended ceiling frame options (as per below details).
- Cover screw head with decorative cap (4)

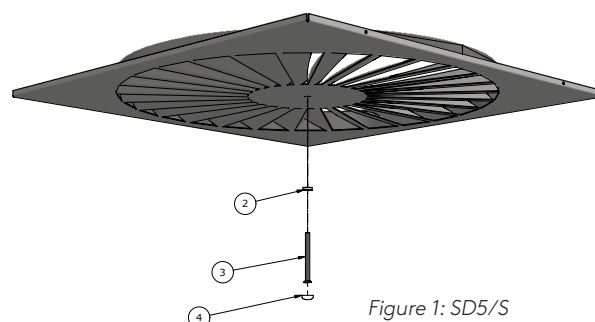


Figure 1: SD5/S

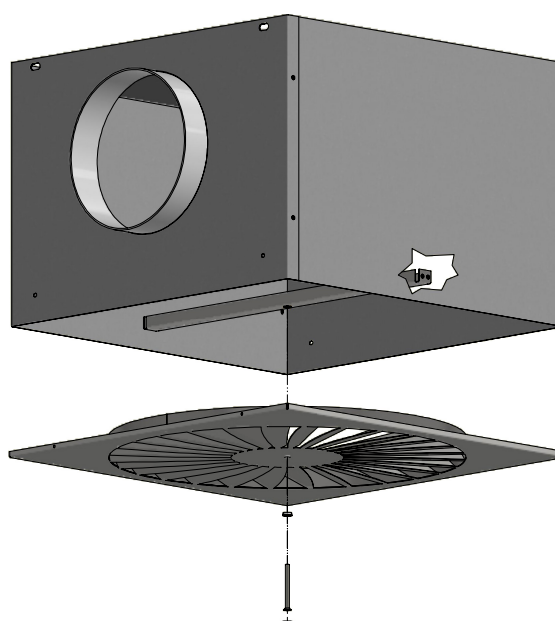
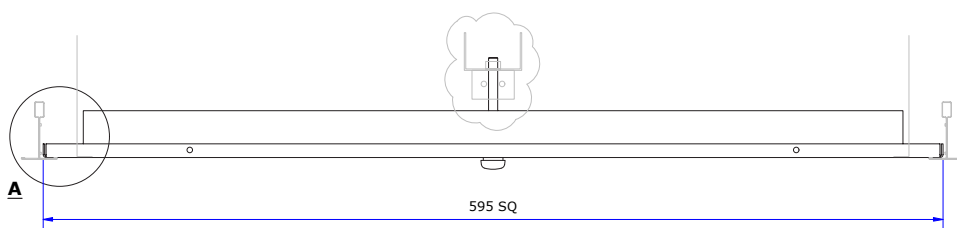
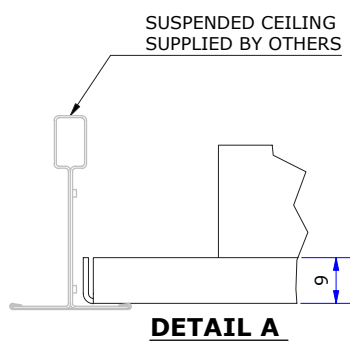


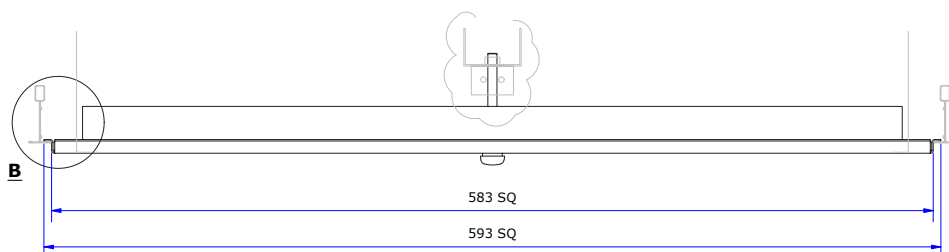
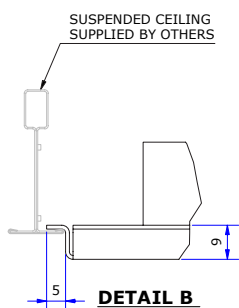
Figure 2: SD5/S with SDVPS Plenum

Integration with suspended ceiling system

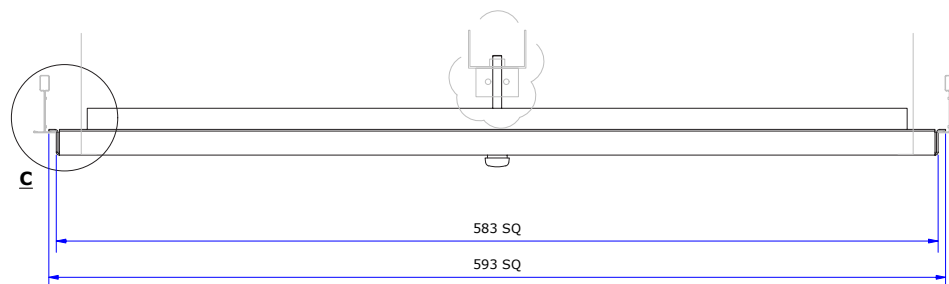
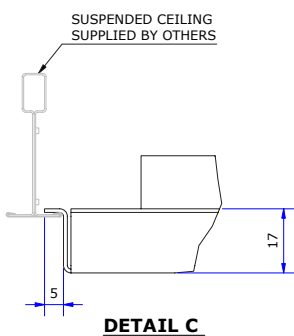
SD5/S/L



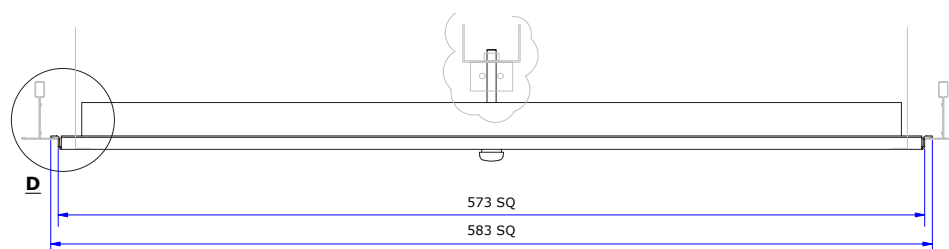
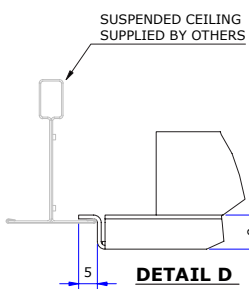
SD5/S/T8-15



SD5/S/T16-15

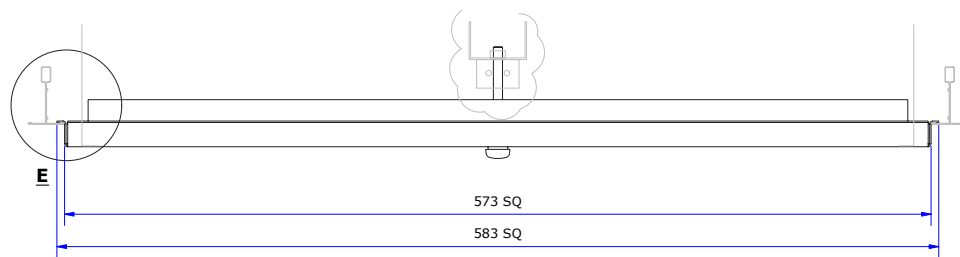
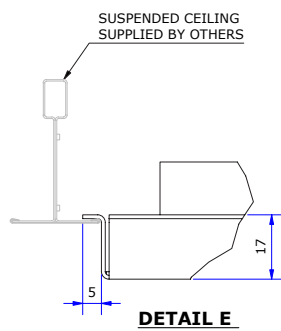


SD5/S/T8-24

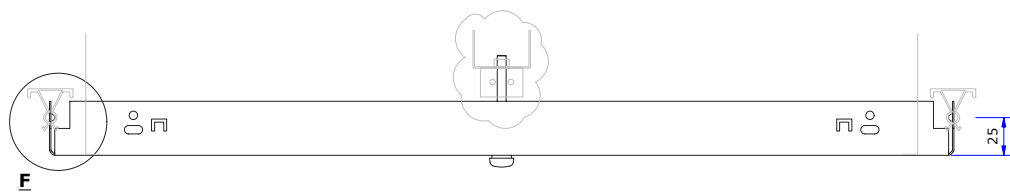
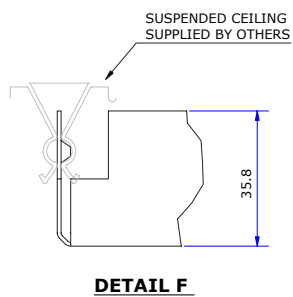


Integration with suspended ceiling system

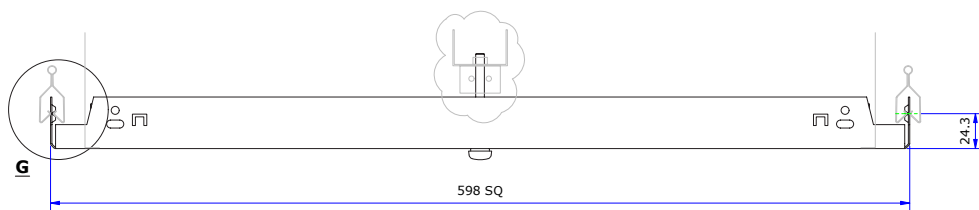
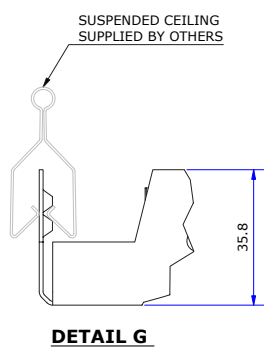
SD5/S/T16-24



SD5/S/C120



SD5/S/C150



SD5/C installation with SDVPC plenum

Items 2,3 & 4 supplied loose for site assembly

- Form opening in plasterboard ceiling according to dimensions in the table (Figure 5).
- Place diffuser neck into the opening
- Fix the diffuser using the supplied central fixing bolt (3) & plastic washer (2) to the plenum crossbar. (Figure 4).
- Cover screw head with decorative cap (3)

| Diffuser Size | Nominal Cut Out |
|---------------|-----------------|
| 300 | 270 Ø |
| 400 | 370 Ø |
| 500 | 470 Ø |
| 600 | 560 Ø |

Figure 5: Table of opening cut out sizes

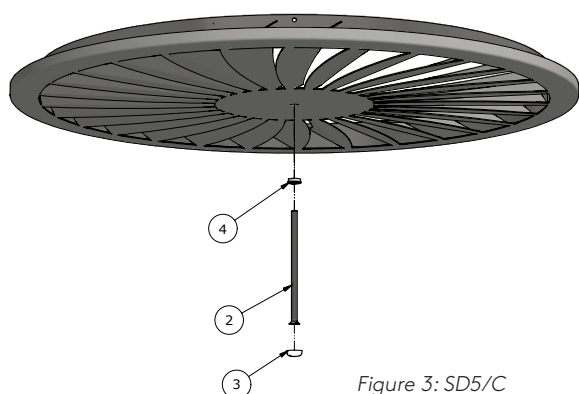


Figure 3: SD5/C

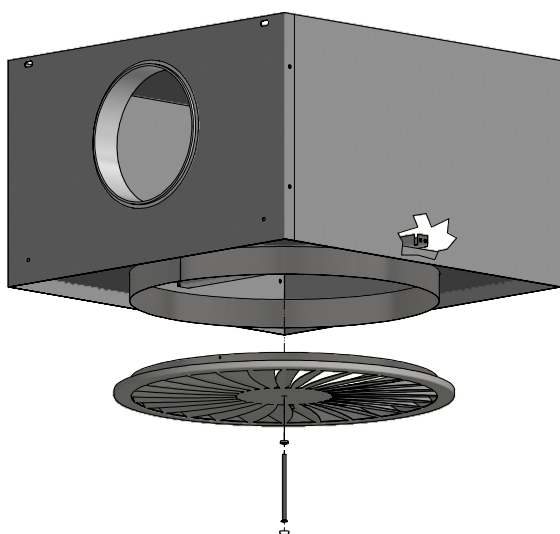
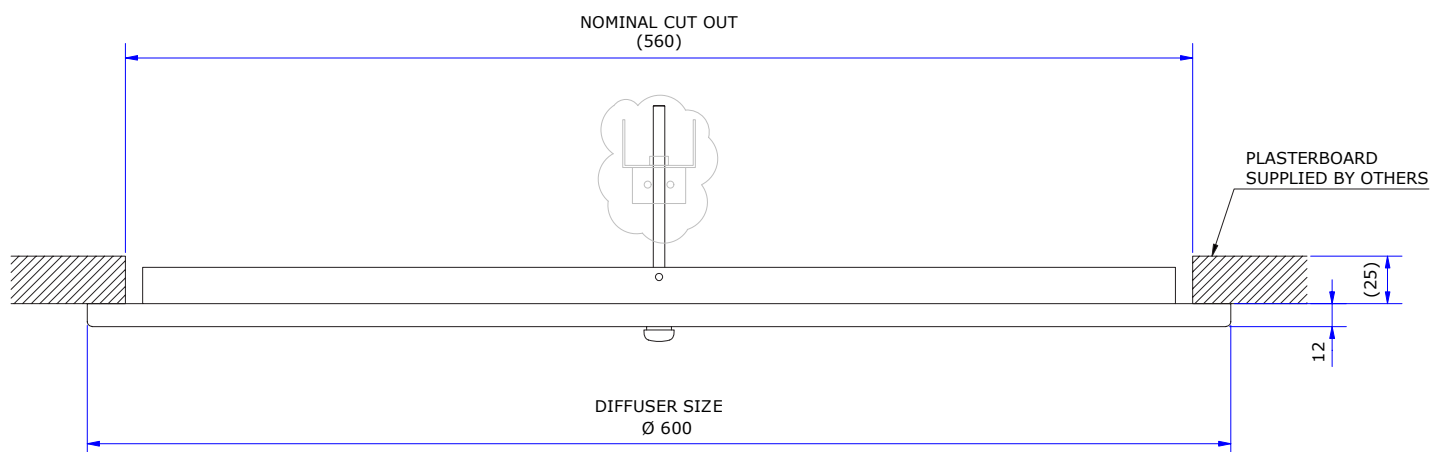


Figure 4: SD5/C with SDPVC Plenum



SD5/C installation with CPB circular plenum

Items 2,3 & 4 supplied loose for site assembly

- Fix the diffuser using the supplied central fixing bolt (2) & plastic washer (4) to the plenum crossbar (figure 6)
- Cover screw head with decorative cap (3)

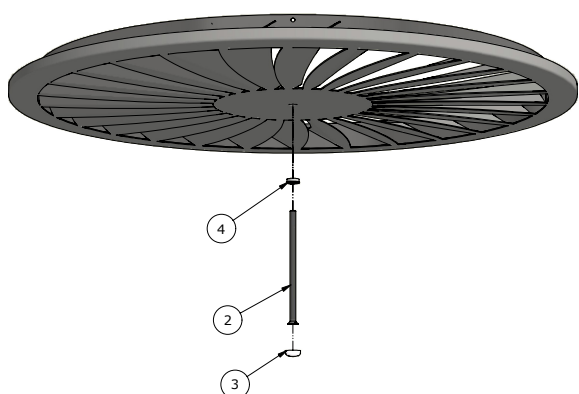


Figure 6: SD5/C

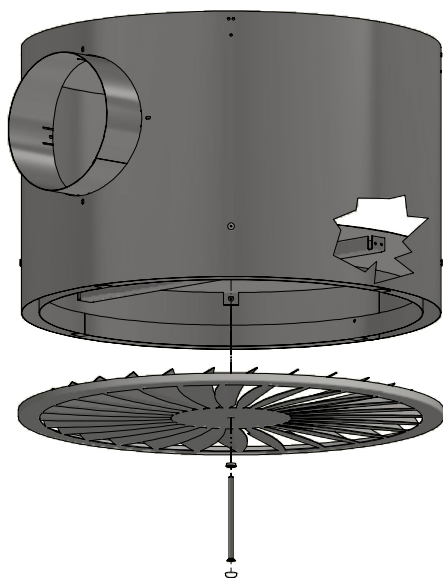


Figure 7: SD5/C with CPB plenum

SD5/C installation with Extract collar

- Form opening in plasterboard ceiling according to dimensions in the table (Figure 5).
- Fix the diffuser using the supplied central fixing bolt (2) & plastic washer (4) to the collar crossbar (figure 8)
- Cover screw head with decorative cap (3)

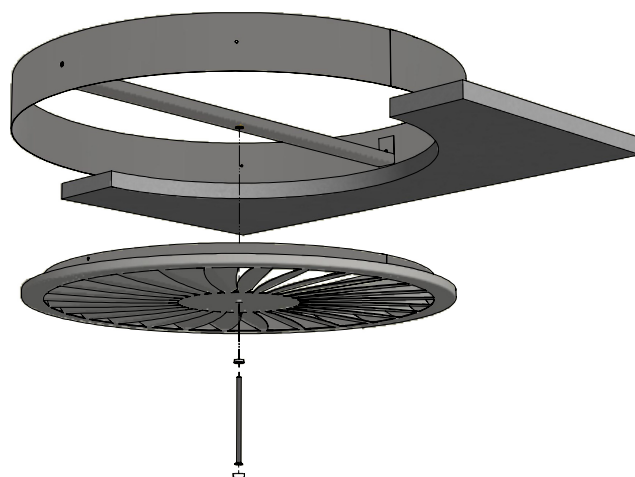


Figure 8: SD5/C with fixing collar in a solid ceiling application

| Diffuser Size | Nominal Cut Out |
|---------------|-----------------|
| 300 | 270 Ø |
| 400 | 370 Ø |
| 500 | 470 Ø |
| 600 | 560 Ø |

Figure 5: Table of opening cut out sizes.

SD5/S Light Baffle assembly & installation

- Rivet Item (2) to Item (1) using provided rivets (3) as figure 9
- Check orientation of legs
- Lay on back of diffuser as figure 10

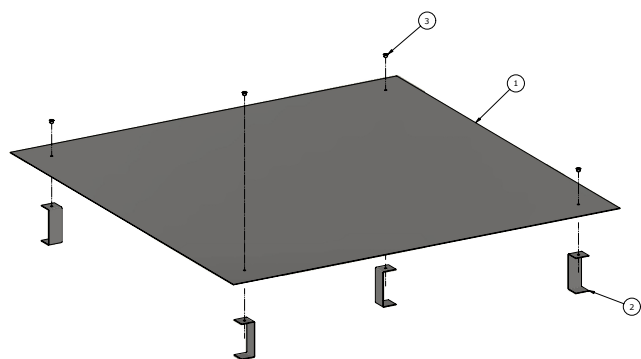


Figure 9: SD5/S Light Baffle Plate/Leg for Square Swirl

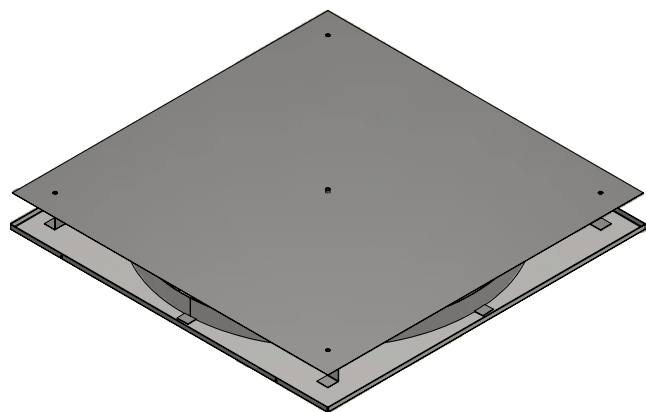


Figure 10: SD5/S Light Baffle Installation to SD5/S

SD5/C Light Baffle assembly & installation

- Rivet Item (2) to Item (1) using provided rivets (3) as figure 11
- Check orientation of legs
- Lay inside extract fixing collar
- Rivet light baffle to extract collar as in figure 12

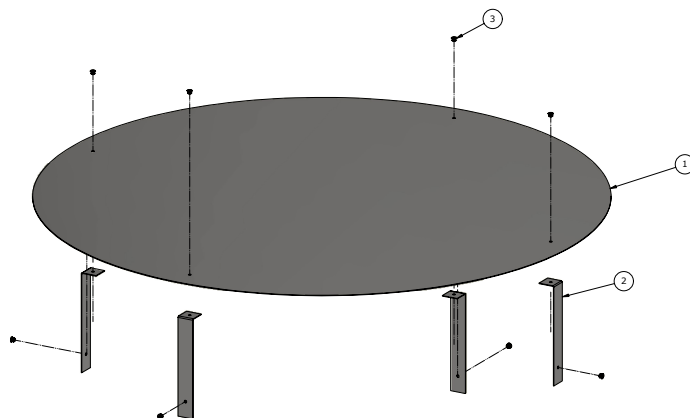


Figure 11: SD5/C Light Baffle Installation to SD5/C

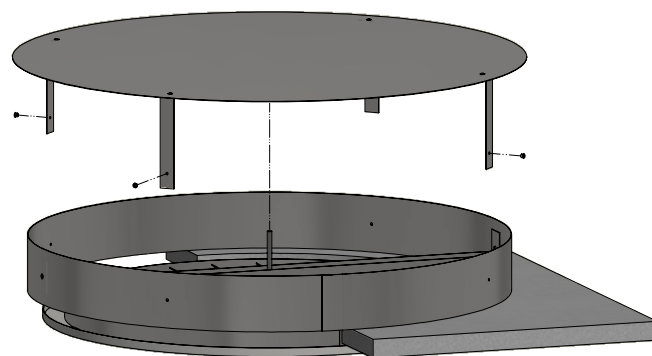


Figure 12: Light Baffle Installation to SD5/C