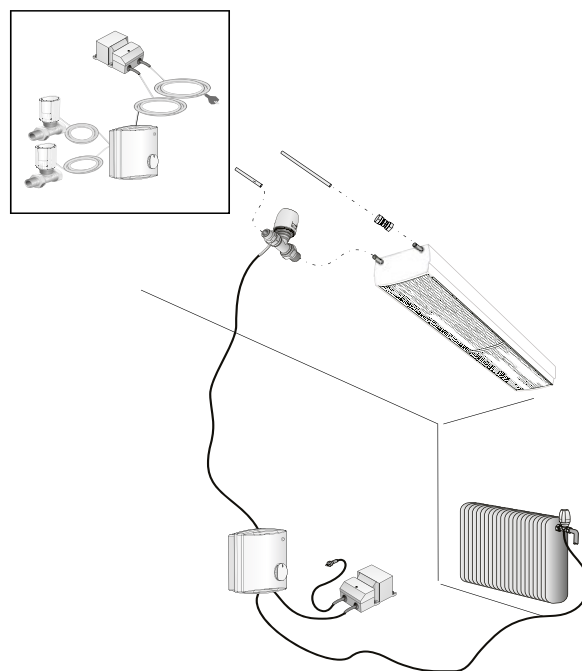
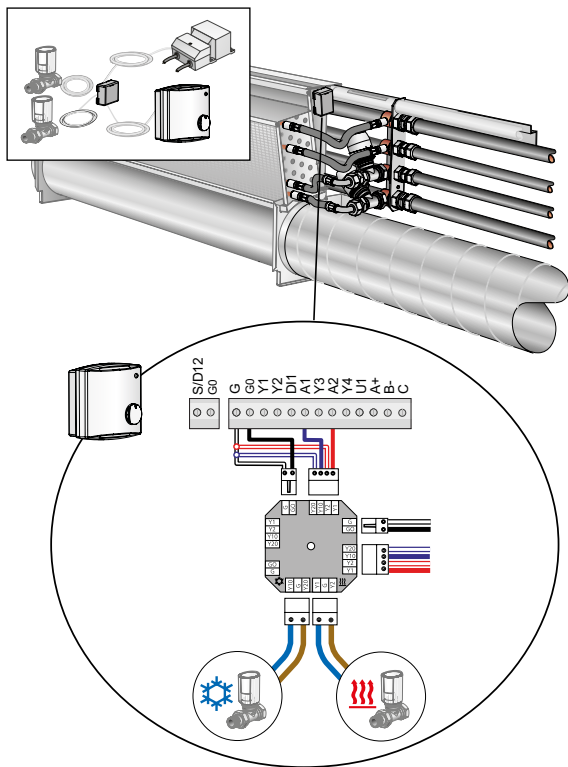


# LUNA RE e

Installation

2025-05-06

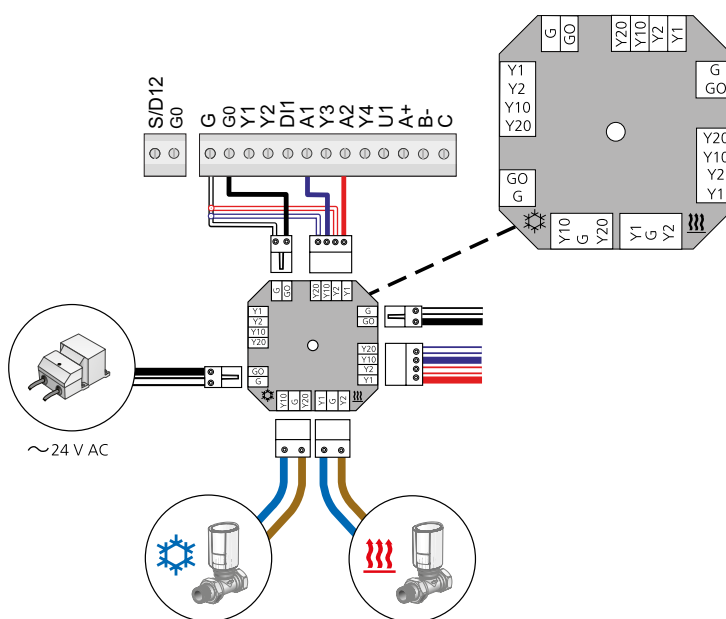
Art. 94242896

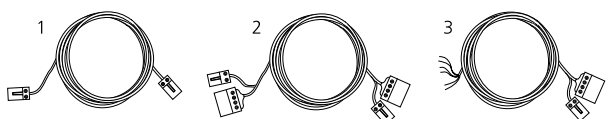
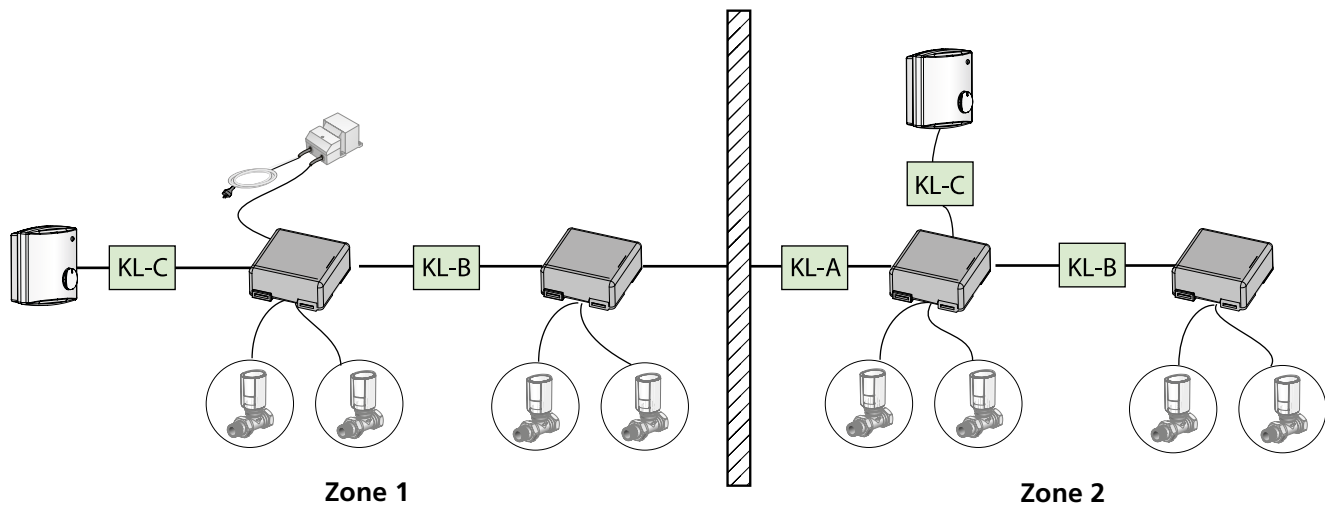


## LUNA e RE-1



S/D12	➤ Sensor (ext. NTC) / DI2 door/window contact or condensation switch)
G0	➤
G	➤ 24 V Power supply
G0	➤ 0 Vac
Y1	➤ 0...10 V, VAV control out
Y2	➤ 0...10 V, fan speed out
DI1	➤ PIR / card switch day/night
A1	➤ 24 VAC 1A, cooling out
Y3	➤ 0...10 V, cooling out
A2	➤ 24 VAC 1A, heating out
Y4	➤ 0...10 V, heating out
U1	➤ Potentiometer
A+	RS 485
B-	RS 485
C	RS 485 Common





Pos.	Type	Description
1	KL-A	Power cable
2	KL-B	Signal and Power cable
3	KL-C	Regulator cable

LUNA e RE-S / LUNA e RE-CCO

