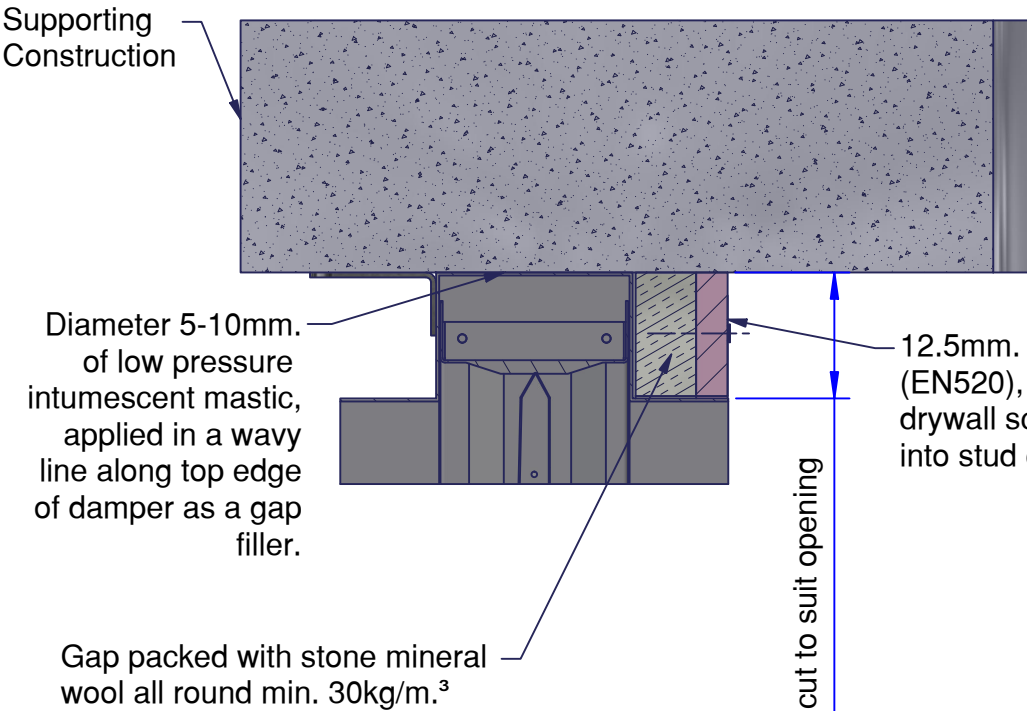


VERTICAL BLADES

Damper can be installed with the blades in the vertical orientation with the actuator mounted at the bottom. For cleat locations of motors mounted on the bottom refer to drawing AA-SS-2011.

SECTION A-A



Dampers supplied with cleats welded to side flanges to assist with installation only

2-off 12.5mm gypsum fire boards type F (EN520) both sides

Stone wall min 30kg/m³ at least 40mm thick

UTD 52 stud channel

Interface shroud

SECTION B-B

12.5mm. thick 150mm gypsum fire boards type F (EN520) on sides and bottom, fixed with min Ø 4mm drywall screws at least 60mm long (@300 ctrs) into stud channels.

on actuator side only up to 55mm. infill

SECTION C-C

DWFX-F angle flange (welded to damper casing) on sides and bottom fixed with min Ø 4mm drywall screws at least 50mm long (@150mm. ctrs) into stud channel.

12.5mm. thick 150mm gypsum fire boards type F (EN520) on sides and bottom, fixed with min Ø 4mm drywall screws at least 60mm long (@300 ctrs) into stud channels.

5-30mm. infill on non-drive side & bottom.

min 100mm thickness



SCAN ME

Please refer to the DoP for latest classifications for CE/UKCA compliance and the Installation, Operation and Maintenance Guide



© Swegon Air Management Limited
South Street, Whitstable, Kent CT5 3DU
Tel: +44 (0)1227 276100
Email: actionair@swegon.com
www.swegon.com/uk

Installation Detail

If your proposed installation details differ from that shown here, please discuss this with the authority having jurisdiction, referencing this documentation.

Deviation from this drawing requires approval of the relevant authority.

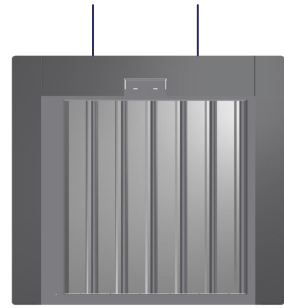
Connecting ductwork omitted for clarity. Ductwork must be independently supported. There must be an appropriate break-away joint between the damper and the connecting ductwork on both sides of the installation.

A minimum of 200mm between fire dampers installed in separate ducts and 75mm between fire damper and construction elements/edges needs to be observed unless otherwise specified in the drawing.

K	ECN3002	MJB	06-08-25
J	ECN2277	JPM	18/05/23
I	ECN2249	JPM	06/07/22
H	ECN2227	JPM	29/04/22
G	ECN5134	MJB	05-02-21
F	ECN1936	MJB	01-07-19
E	ECN1928	MJB	14-05-19
D	ECN1922	MJB	12-04-19
C	ECN1821	N.H	08/03/18
B	ECN1820	MJB	06-03-18
A	ECN1770	MJB	20-02-18
Rev:	Comments:	By:	Date:
Drawn By:	S.Wehrle	Date:	07/11/2016
Checked By:	A. Hill	Date:	06/08/2025
Approved By:	S. Gore	Date:	06/08/2025

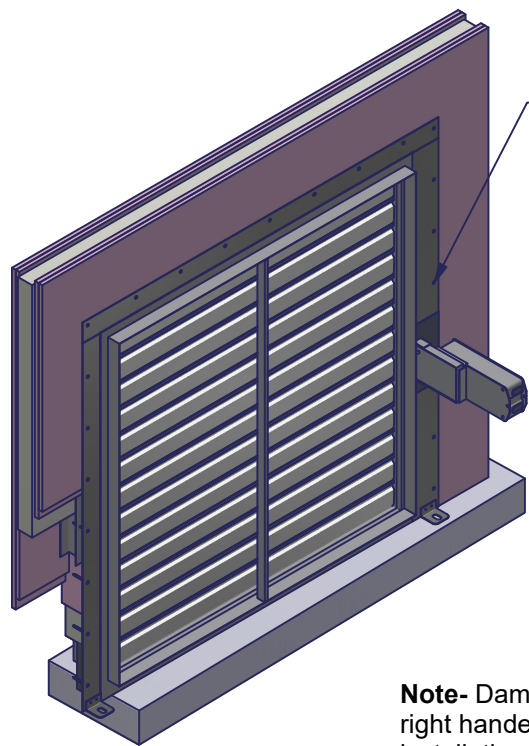
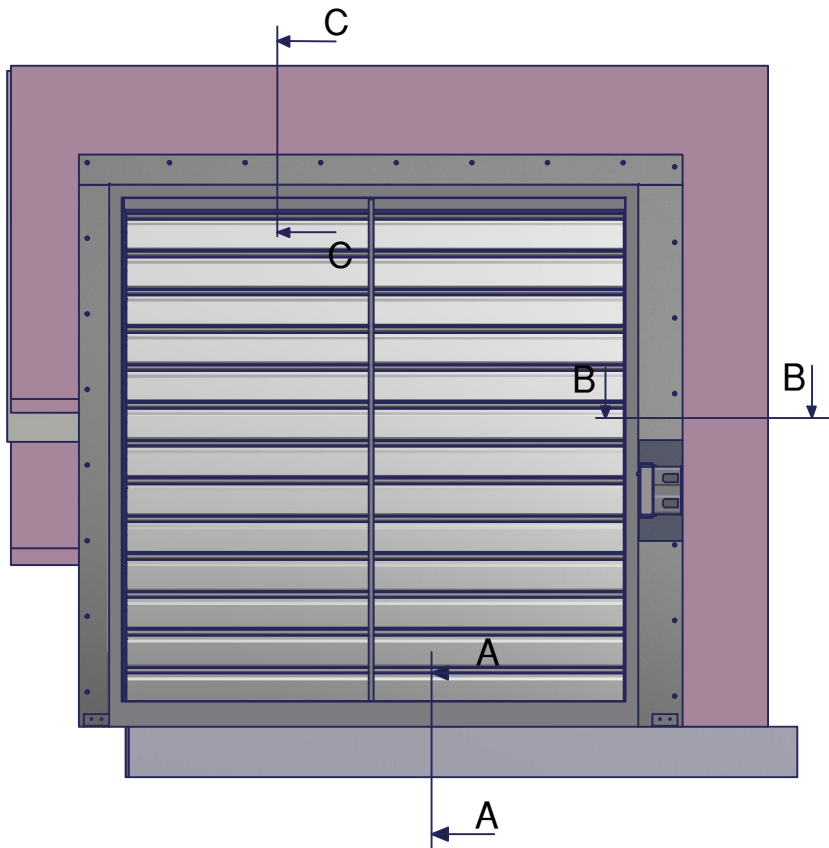
Description:
VERTICAL APPLICATION
SMOKE SHIELD DWFX-3F IN
PLASTERBOARD WALL AGAINST
SUPPORTING CONSTRUCTION
Damper Size Range (mm)
200 x 200 to 1000 x 1000

Reference No:	Sheet	Rev
AAF11945	1 of 3	K



VERTICAL BLADES

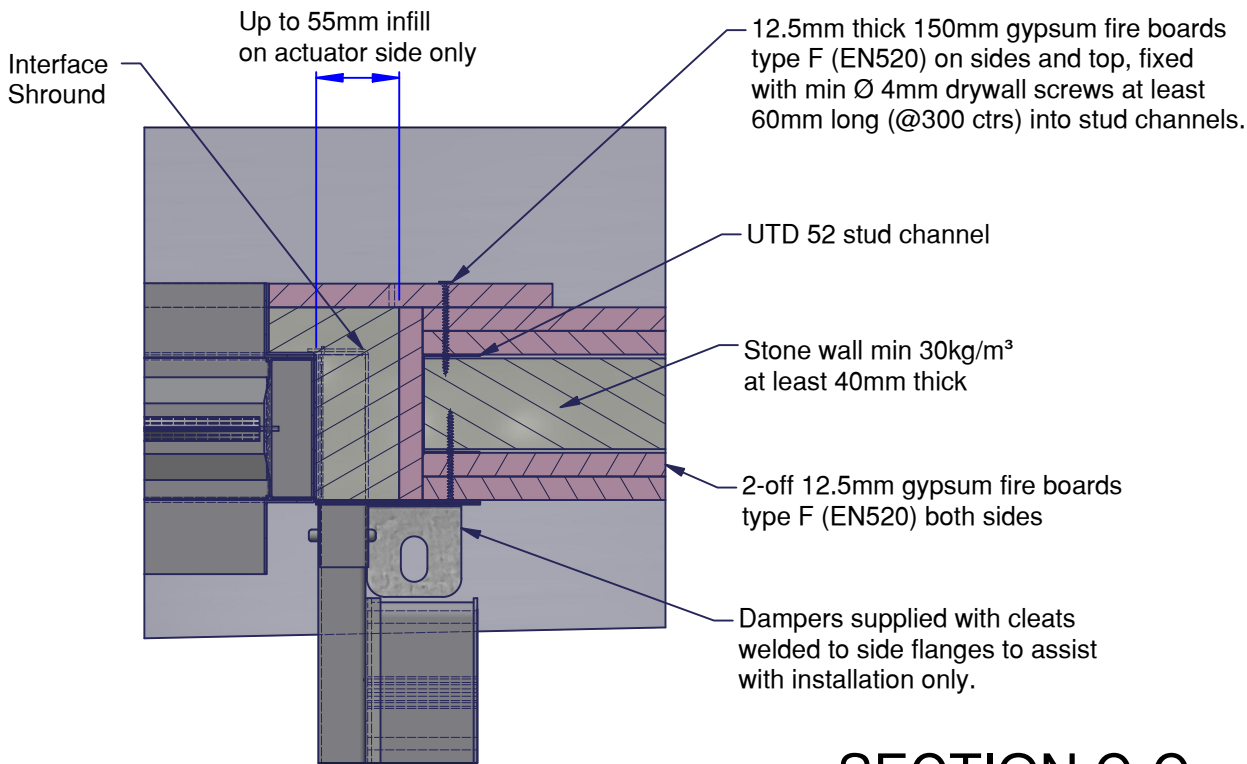
Damper can be installed with the blades in the vertical orientation with the actuator mounted at the top. For cleat locations of motors mounted on the top refer to drawing AA-SS-2011.



DWFX-F angle flange (welded to damper casing) on sides and top fixed with min Ø 4mm drywall screws at least 50mm long (@150mm. ctrs) into stud channel.

Diameter 5-10mm of low pressure intumescent mastic, applied in a wavy line along the bottom edge of the damper as a gap filler.

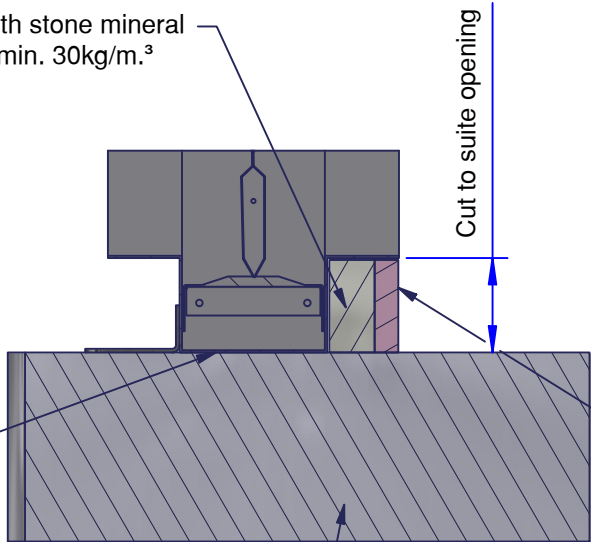
Note- Damper manufactured as right handed and turned 180° for installation.



SECTION B-B

SECTION A-A

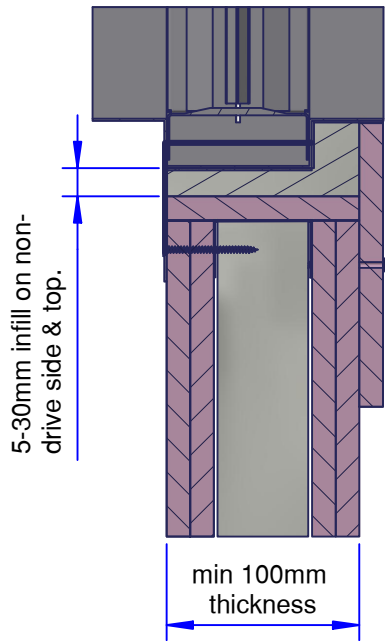
Gap packed with stone mineral wool all round min. 30kg/m.³



Supporting Construction

12.5mm gypsum fire board type F (EN520), fixed with min Ø 4mm drywall screws at least 40mm long into stud channel at ends.

SECTION C-C



SCAN ME

Please refer to the DoP for latest classifications for CE/UKCA compliance and the Installation, Operation and Maintenance Guide



actionair

by Swegon

© Swegon Air Management Limited
South Street, Whitstable, Kent CT5 3DU
Tel: +44 (0)1227 276100
Email: actionair@swegon.com
www.swegon.com/uk

Installation Detail

If your proposed installation details differ from that shown here, please discuss this with the authority having jurisdiction, referencing this documentation.

Deviation from this drawing requires approval of the relevant authority.

Connecting ductwork omitted for clarity. Ductwork must be independently supported. There must be an appropriate break-away joint between the damper and the connecting ductwork on both sides of the installation.

A minimum of 200mm between fire dampers installed in separate ducts and 75mm between fire damper and construction elements/edges needs to be observed unless otherwise specified in the drawing.

K	ECN3002	MJB	06-08-25
J	ECN2277	JPM	18/05/23
I	ECN2249	JPM	06/07/22
H	ECN2227	JPM	29/04/22
G	ECN5134	MJB	05-02-21
F	ECN1936	MJB	01-07-19
E	ECN1928	MJB	14-05-19
D	ECN1922	MJB	12-04-19
C	ECN1821	N.H	08/03/18
B	ECN1820	MJB	06-03-18
A	ECN1770	MJB	20-02-18

Rev: Comments: By: Date:

Drawn By: S.Wehrle Date: 07/11/2016

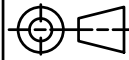
Checked By: A. Hill Date: 06/08/2025

Approved By: S. Gore Date: 06/08/2025

Description:
VERTICAL APPLICATION
SMOKE SHIELD DWFX-3F IN
PLASTERBOARD WALL AGAINST
SUPPORTING CONSTRUCTION

Damper Size Range (mm)
200 x 200 to 1000 x 1000

Reference No: AAF11945	Sheet 2 of 3	Rev K
---------------------------	-----------------	----------

Drawing No: AAF11945	Sheet 3 of 3	Rev K	 Third Angle Projection	A3
--------------------------------	------------------------	-----------------	--	-----------

All dimensions in mm. **Do NOT** scale from drawing. If in doubt **ASK!****actionair**
by Swegon

© Swegon Air Management Limited
South Street, Whitstable, Kent CT5 3DU
Tel: +44 (0)1227 276100
Email: actionair@swegon.com
www.swegon.com/uk

Assembly Notes

Part No: N/A
Est Weight: N/A
Drawing notes & limits (unless otherwise stated)
No Decimal: $\pm 1.00\text{mm}$
One Decimal: $\pm 0.50\text{mm}$
Two Decimals: $\pm 0.25\text{mm}$
Three Decimals: $\pm 0.10\text{mm}$
Angles: ± 2.00 degrees

Critical dims and features shown in red and enclosed in box

Manufacturing Detail**Notes**

- Angle flanges on access side.
- 1.20mm x 60mm. x 78mm, N/D/S & bottom, 1.2mm x 88mm. 78mm. D/S (m/stl galv.) flange to damper casing welds must be 6-10mm stitch welds, 125mm (max) centres.
- Two cleats welded to side angles as shown.

K	ECN3002	MJB	06-08-25
J	ECN2277	JPM	18/05/23
I	ECN2249	JPM	06/07/22
H	ECN2227	JPM	13/04/22
G	ECN5134	MJB	05-02-21
F	ECN1936	MJB	01-07-19
E	ECN1928	MJB	14-05-19
D	ECN1922	MJB	12-04-19
C	ECN1821	N.H	08/03/18
B	ECN1820	MJB	06-03-18
A	ECN1770	MJB	20-02-18

Rev: Comments: By: Date:

Drawn By: S.Wehrle Date: 07/11/2016

Checked By: A. Hill Date: 06/08/2025

Approved By: S. Gore Date: 06/08/2025

Product: SS

Client: N/A

Project: N/A

Description:
SS damper manufacturing detail for DWFX-3F
installation in a plasterboard wall against a
supporting construction

Drawing No: AAF11945	Sheet 3 of 3	Rev K
--------------------------------	------------------------	-----------------



D

D

C

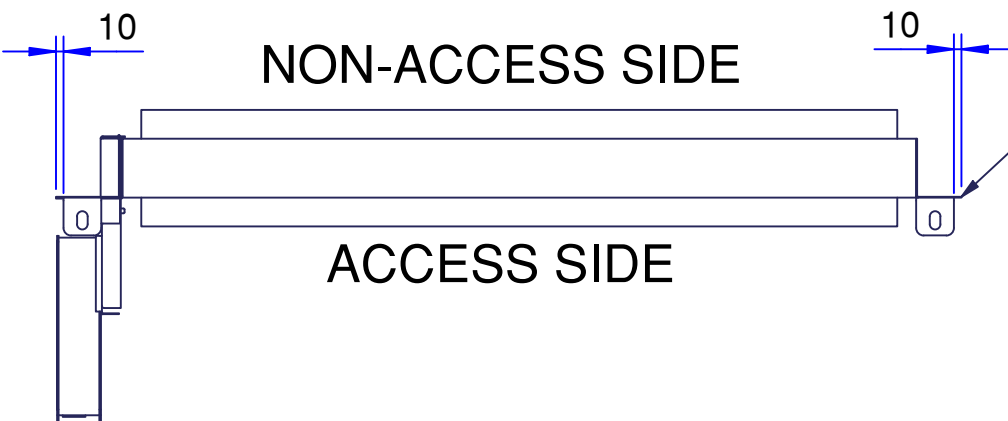
C

B

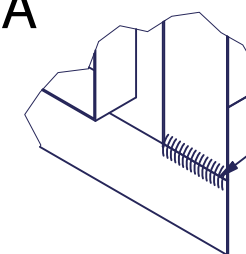
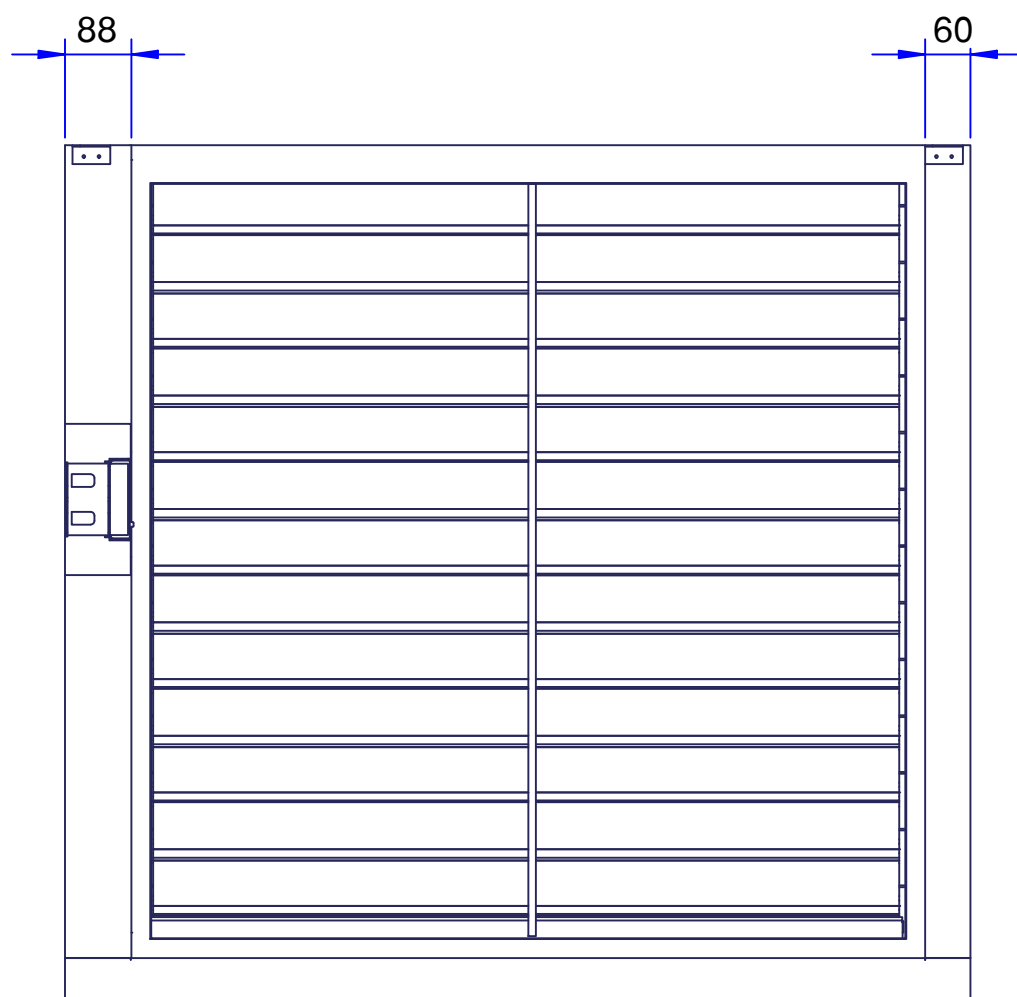
B

A

A

Three flange faces flush
with damper case

A

Seam weld join in flange
Typical two places

Two cleats (SF028)

All four corners to be fully
welded to the damper case

A



NON-ACCESS SIDE

