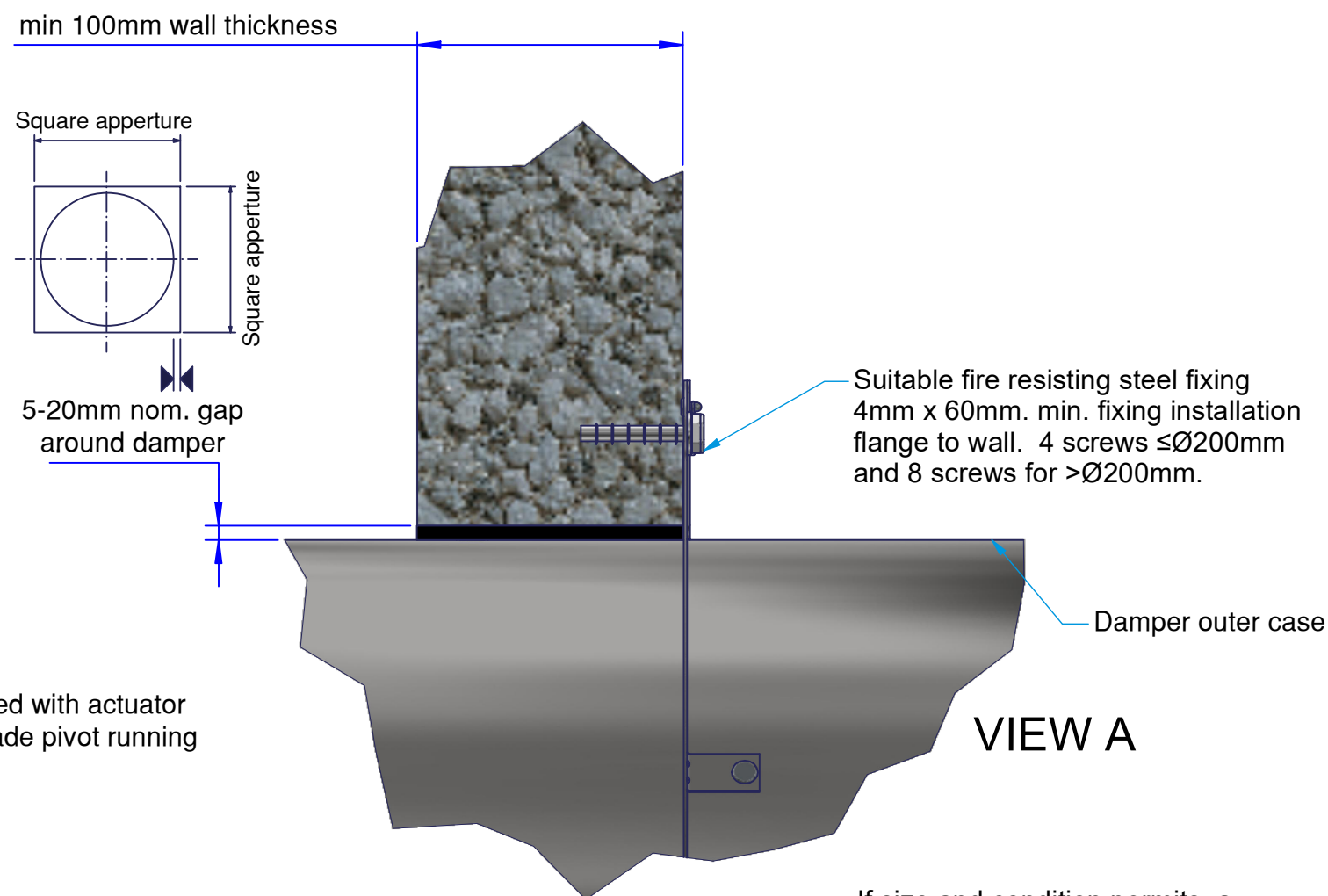
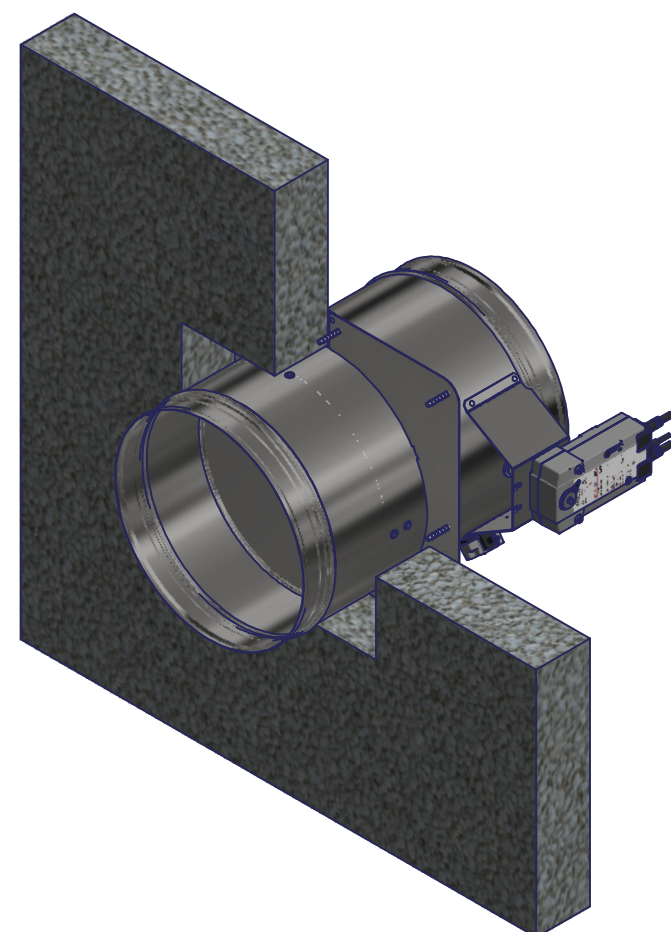


Actuator
Damper to be mounted with actuator
to left or right with blade pivot running
horizontally.

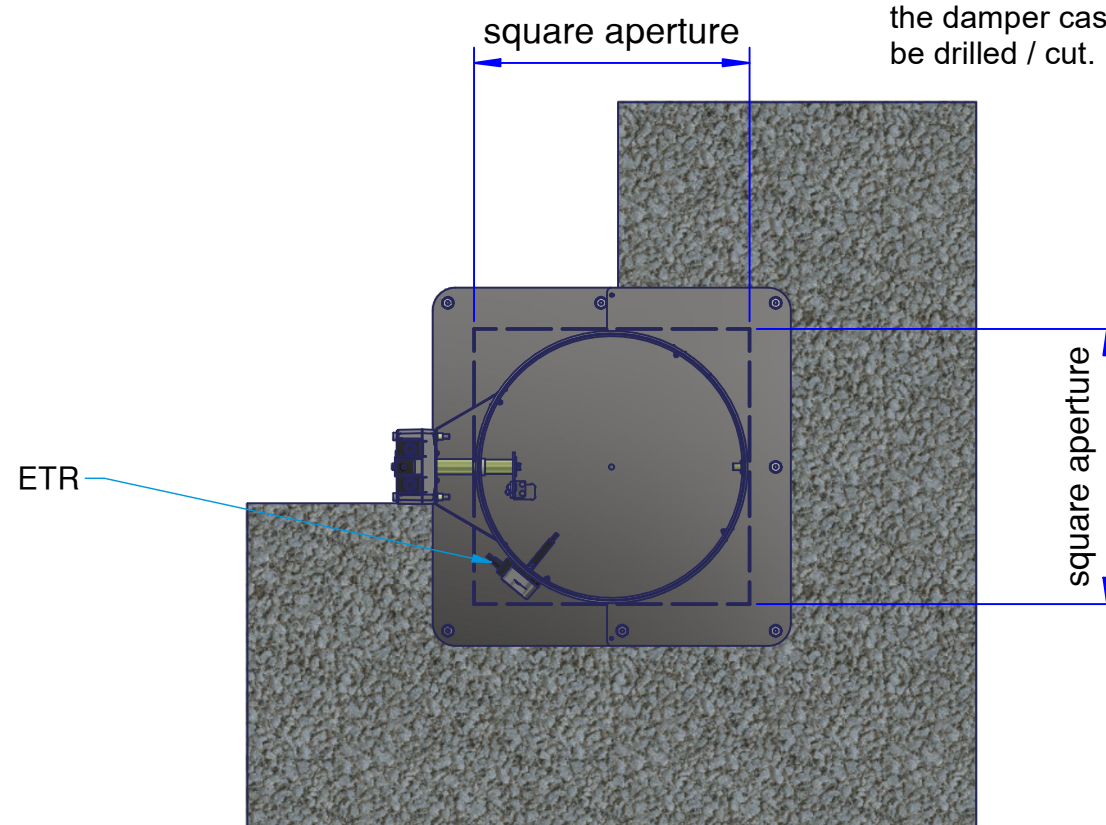
Installation flange

Block / masonry wall



VIEW A

If size and condition permits, a
circular hole 10-30mm larger than
the damper casing diameter can
be drilled / cut.



Installation Detail

If your proposed installation details differ from that shown here, please discuss this with the authority having jurisdiction, referencing this documentation.

Deviation from this drawing requires approval of the relevant authority.

Connecting ductwork omitted for clarity. Ductwork must be independently supported. There must be an appropriate break-away joint between the damper and the connecting ductwork on both sides of the installation.

A minimum of 200mm between fire dampers installed in separate ducts and 75mm between fire damper and construction elements/edges needs to be observed unless otherwise specified in the drawing.



SCAN ME

Please refer to the DoP
for latest classifications
for CE/UKCA
compliance and the
Installation, Operation
and Maintenance Guide

D	ECN2227	JPM	13/04/22
C	ECN1961	MJB	29-11-19
B	ECN1955	MJB	06-11-19
A	ECN1927	MJB	14-08-19
Rev:	Comments:	By:	Date:
Drawn By:	M. Bushell	Date:	22/05/2019
Checked By:	Kimberley.M	Date:	13/04/2022
Approved By:	Gore.S	Date:	13/04/2022

Description:

VERTICAL APPLICATION
CSS CIRCULAR SMOKE SHIELD
SIDE FIX - SINGLE PLATE

Damper Size Range (mm)
Ø100mm. - Ø355mm.

Reference No:	Sheet	Rev
AAF12822	1 of 1	D