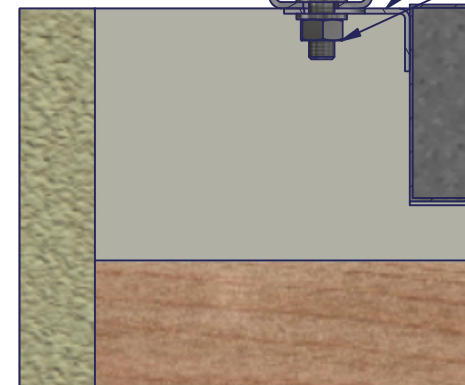


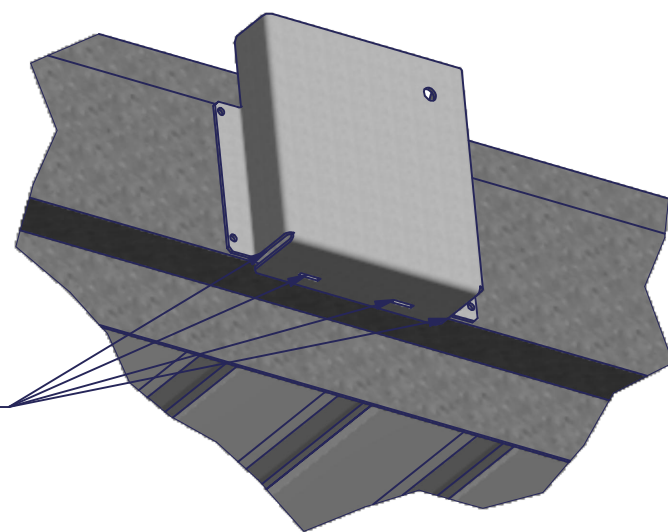
1.5mm. min. unistrut supporting damper either side, by others

Cleat

Damper bolted to unistrut via four cleats (min. M10).



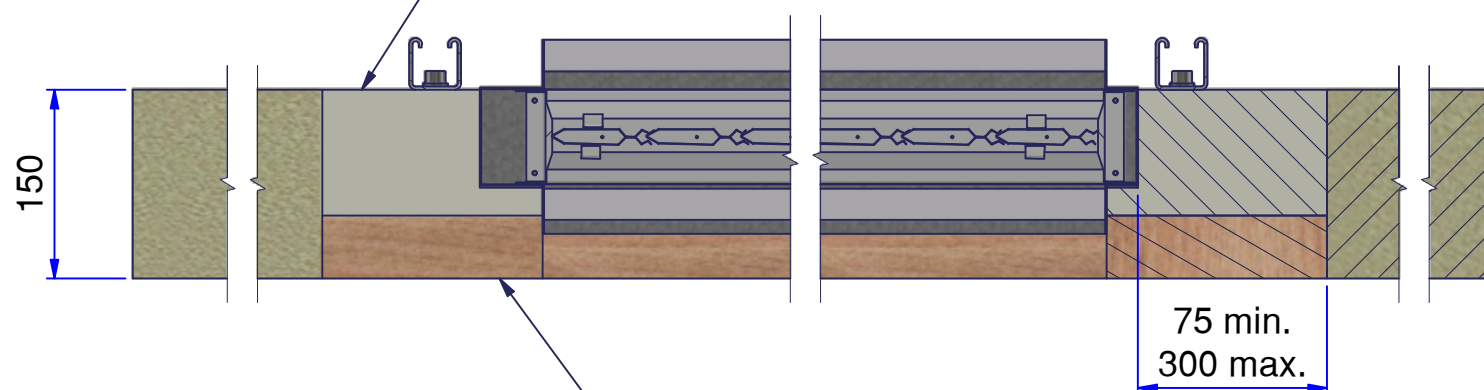
Section B-B
Damper fixing



Tape up underneath the damper interface shroud to protect against penetration of mortar into the interface shroud. It is important that no mortar enters the shroud.

Mortar sand and cement mix 4:1 to 100mm thickness. Fire refractory mortars can also be used (Key in penetration to manufacturers instructions).

Do not fill above damper casing

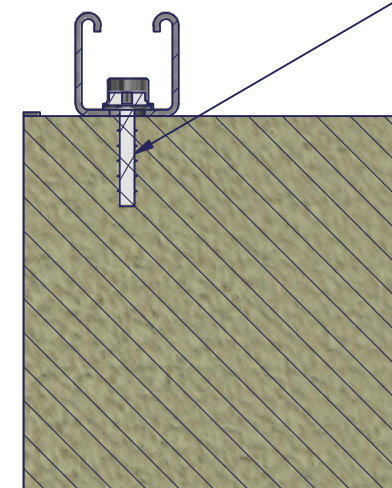


Shuttering, can be removed after setting.

Section A-A

Typically - Unistrut fixed to slab to support damper whilst mortar is setting.

This support can be removed after mortar has set.



Section C-C
Unistrut fixing

actionair
by Swegon

© Swegon Air Management Limited
South Street, Whitstable, Kent CT5 3DU
Tel: +44 (0)1227 276100
Email: actionair@swegon.com
www.swegon.com/uk

Installation Detail

If your proposed installation details differ from that shown here, please discuss this with the authority having jurisdiction, referencing this documentation.

Deviation from this drawing requires approval of the relevant authority.

Connecting ductwork omitted for clarity. Ductwork must be independently supported. There must be an appropriate break-away joint between the damper and the connecting ductwork on both sides of the installation.

A minimum of 200mm between fire dampers installed in separate ducts and 75mm between fire damper and construction elements/edges needs to be observed unless otherwise specified in the drawing.



SCAN ME

Please refer to the DoP for latest classifications for CE/UKCA compliance and the Installation, Operation and Maintenance Guide

B	ECN2227	MJB	13/04/22
A	ECN1932	MJB	05-11-20
Rev:	Comments:	By:	Date:
Drawn By:	M. Bushell	Date:	03/04/2018
Checked By:	Kimberley.M	Date:	13/04/2022
Approved By:	Gore.S	Date:	13/04/2022

Description:

HORIZONTAL APPLICATION
SMOKE SHIELD + COMPOUND
SEAL - SPAN, ACCESS SIDE
ABOVE

Damper Size Range (mm)
200 x 200 to 1000 x 1000

Reference No:	Sheet	Rev
AAF12368	1 of 2	B

For detailed installation, please view document ED-AA-4.

