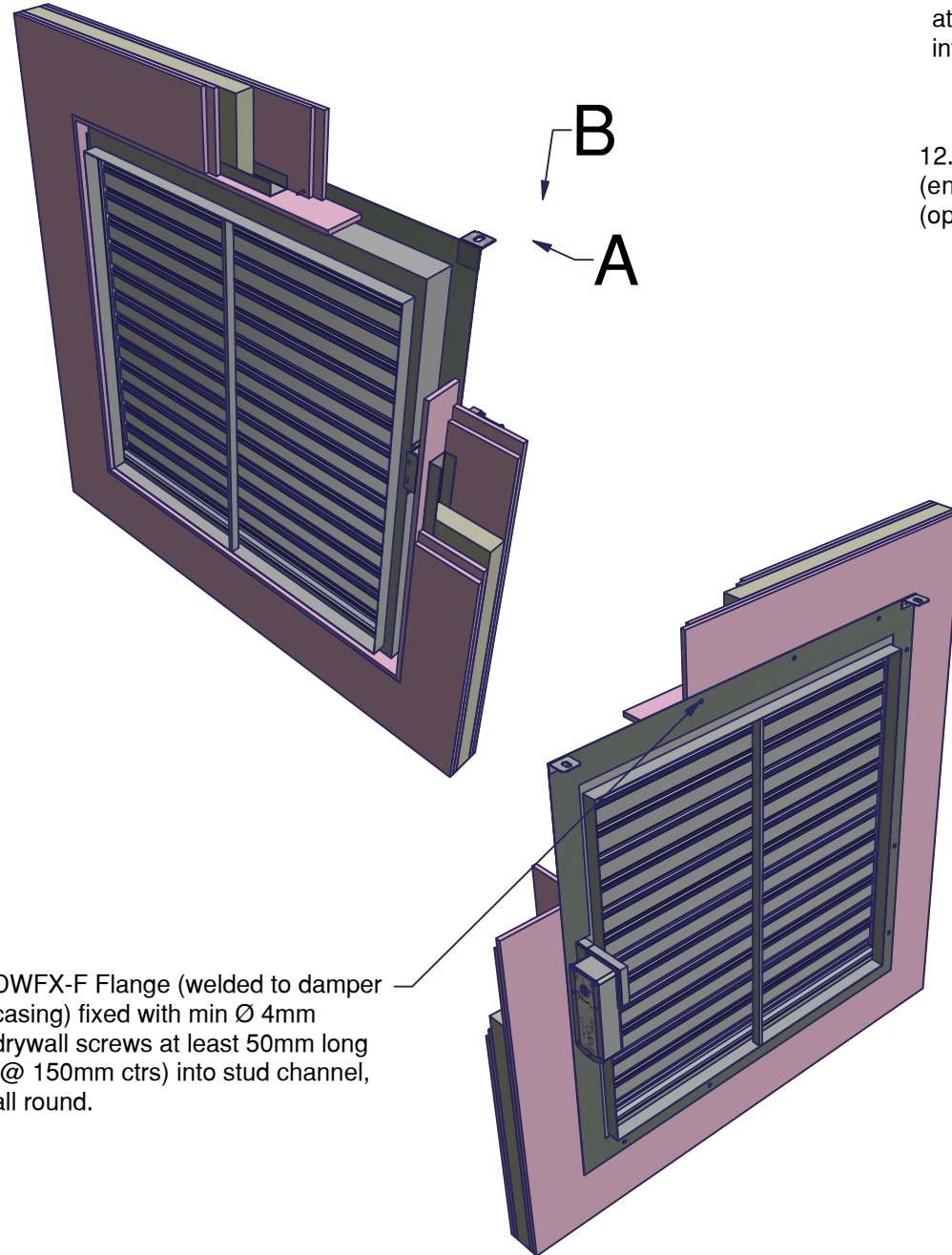


VERTICAL BLADES;

Damper can be installed with the blades in the vertical orientation with the actuator mounted at either the top or bottom. For cleat locations of motors mounted on top refer to drawing AA-SS-2005 and for motors mounted on the bottom refer to drawing AA-SS-2006.

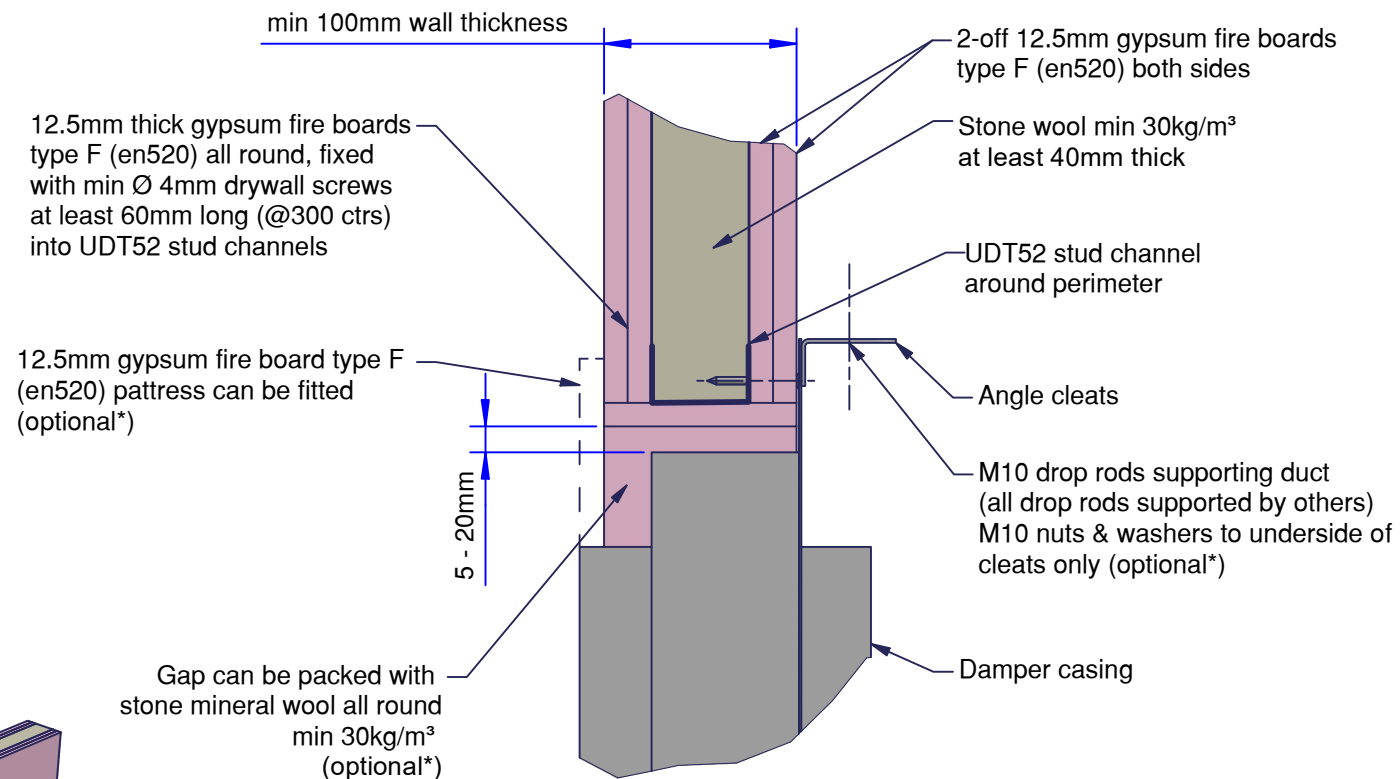


DWFX-F Flange (welded to damper casing) fixed with min Ø 4mm drywall screws at least 50mm long (@ 150mm ctrs) into stud channel, all round.

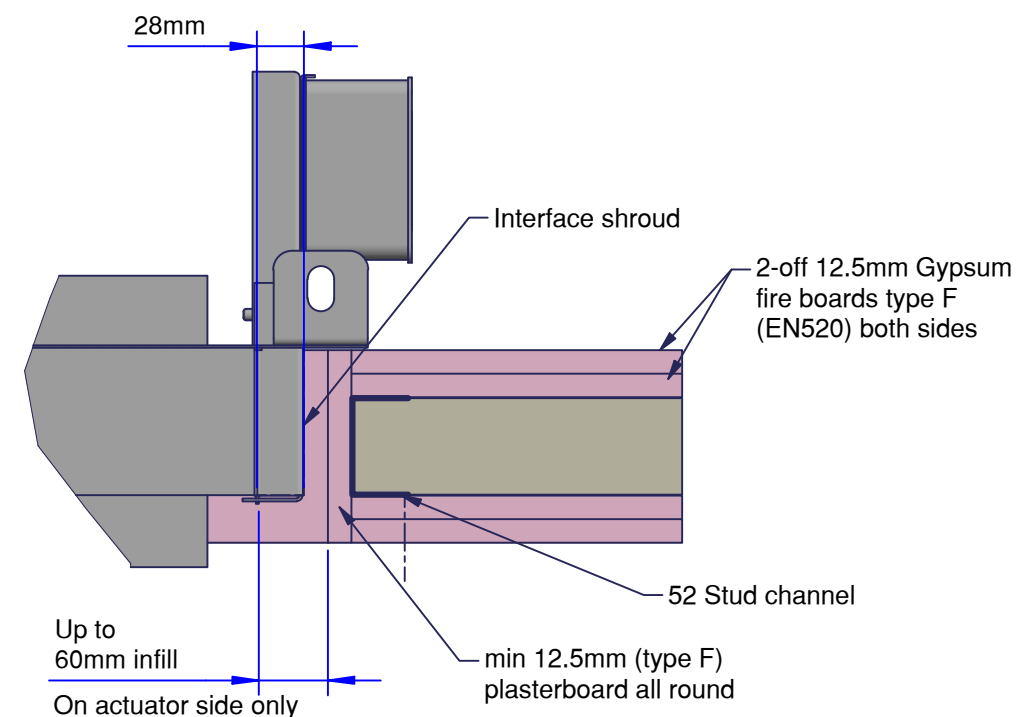
*The damper can be installed with or without drop rods as long as the wall is capable of carrying the load of the damper and with or without the pattress as shown.

The penetration seal can be either filled with a stonewool min30kg/m3 or an ablative coated batt as required or can be left unfilled.

Please see drawing AAF10704, page 2 for alternative configurations:



VIEW A



VIEW B
(SIDE DETAIL)

actionair

by Swegon

© Swegon Air Management Limited
South Street, Whitstable, Kent CT5 3DU
Tel: +44 (0)1227 276100
Email: actionair@swegon.com
www.swegon.com/uk

Installation Detail

If your proposed installation details differ from that shown here, please discuss this with the authority having jurisdiction, referencing this documentation.

Deviation from this drawing requires approval of the relevant authority.

Connecting ductwork omitted for clarity. Ductwork must be independently supported. There must be an appropriate break-away joint between the damper and the connecting ductwork on both sides of the installation.

A minimum of 200mm between fire dampers installed in separate ducts and 75mm between fire damper and construction elements/edges needs to be observed unless otherwise specified in the drawing.



SCAN ME

Please refer to the DoP for latest classifications for CE/UKCA compliance and the Installation, Operation and Maintenance Guide

G	ECN2227	JPM	29/04/22
F	ECN5134	MJB	05-02-21
E	EC1830	RTC	20/03/18
D	EC1770	MJB	20-02-18
Rev:	Comments:	By:	Date:

Drawn By: J.Mount Date: 27/04/2022

Checked By: M.Kimberley Date: 29/04/2022

Approved By: S.Gore Date: 29/04/2022

Description:

**VERTICAL APPLICATION
SMOKE SHIELD DWFX-F IN
PLASTERBOARD WALL**

Damper Size Range (mm)
200 x 200 to 1000 x 1000

Reference No: AAF10704	Sheet 1 of 2	Rev G
---------------------------	-----------------	----------



Installation Detail

If your proposed installation details differ from that shown here, please discuss this with the authority having jurisdiction, referencing this documentation.

Deviation from this drawing requires approval of the relevant authority.

Connecting ductwork omitted for clarity. Ductwork must be independently supported. There must be an appropriate break-away joint between the damper and the connecting ductwork on both sides of the installation.

A minimum of 200mm between fire dampers installed in separate ducts and 75mm between fire damper and construction elements/edges needs to be observed unless otherwise specified in the drawing.

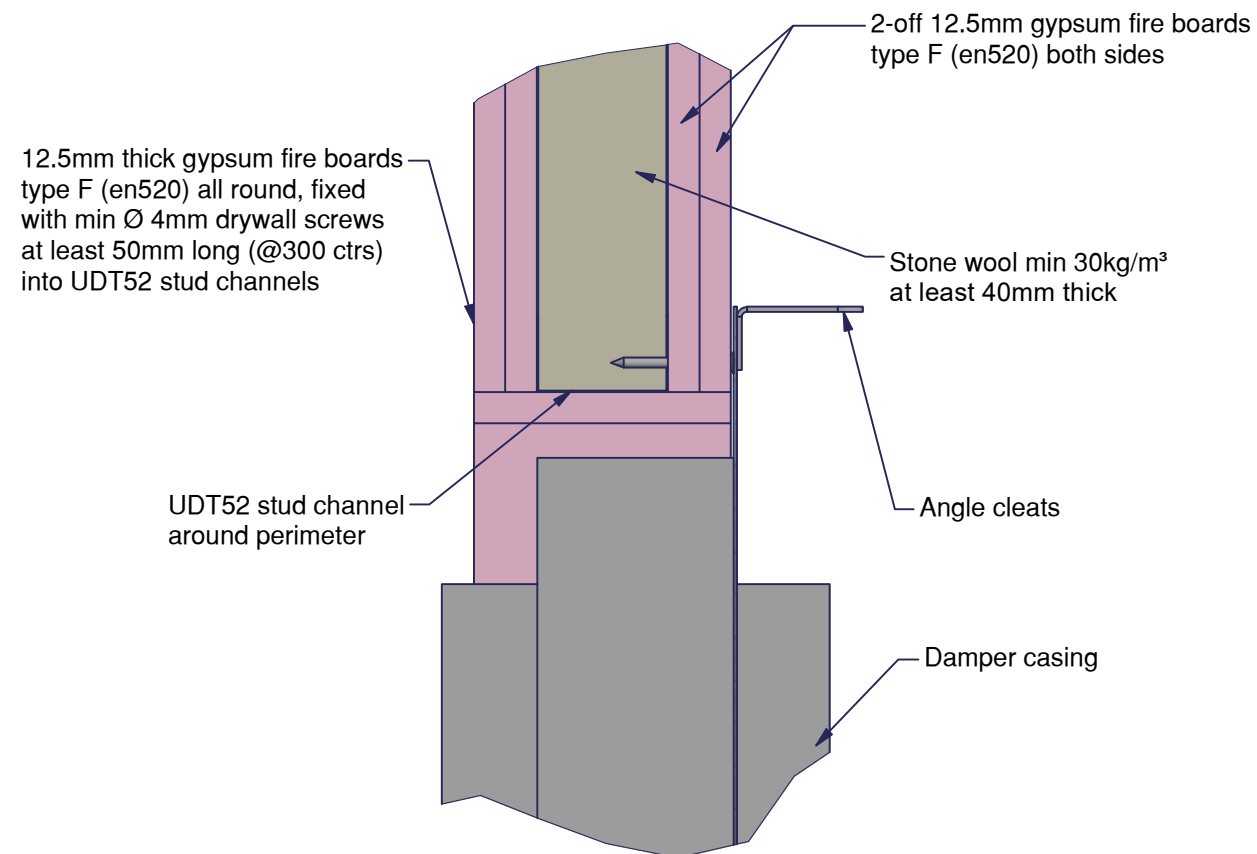


SCAN ME

Please refer to the DoP for latest classifications for CE/UKCA compliance and the Installation, Operation and Maintenance Guide

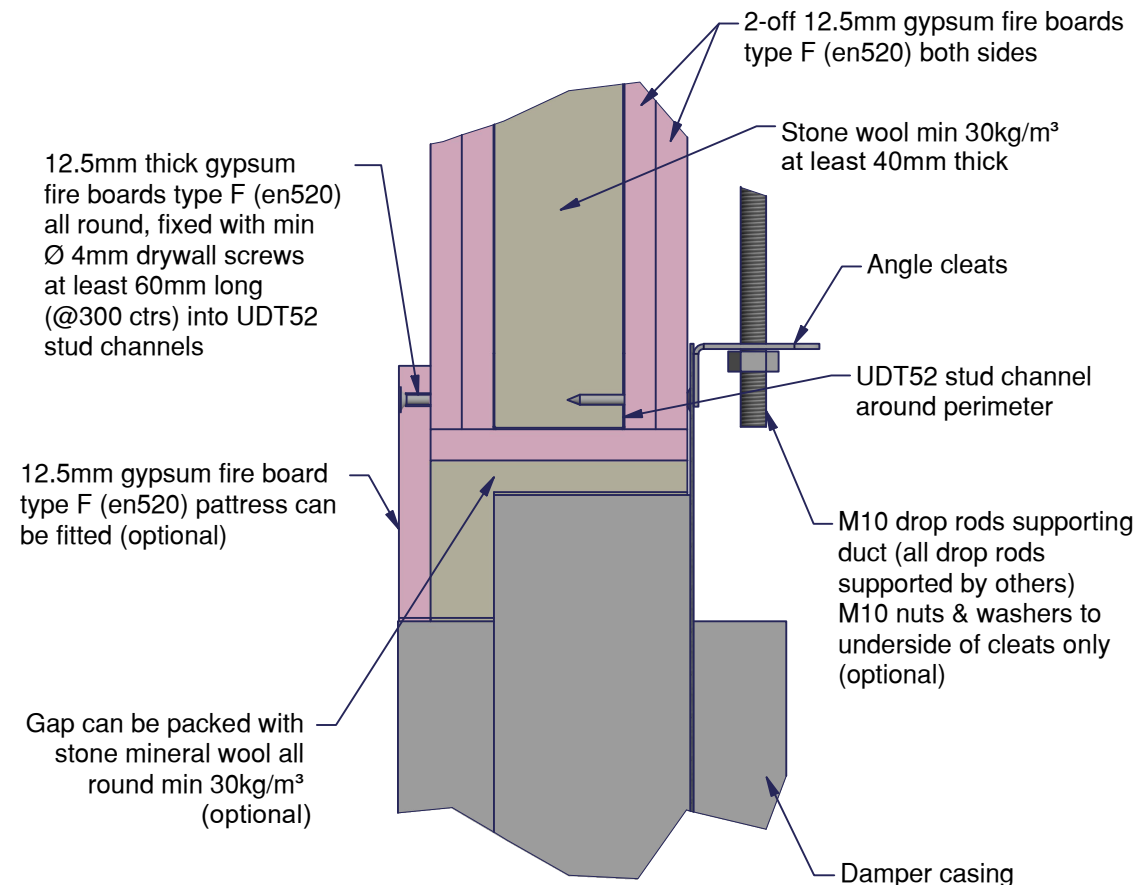
VIEW 1 Standard Single Side Fix

Pattress ✕
Insulation ✕
Droprods ✕



VIEW 2 Optional Elements of Penetration Seal (If required)

Pattress ✓
Insulation ✓
Droprods ✓



Damper Installation Configuration Options

Pattress	Insulation	Droprods
✕	✕	✕
✓	✕	✕
✕	✓	✕
✕	✕	✓
✓	✓	✕
✕	✓	✓
✓	✕	✓
✓	✓	✓



Rev:	Comments:	By:	Date:
Drawn By:	J.Mount	Date:	27/04/2022
Checked By:	M.Kimberley	Date:	29/04/2022
Approved By:	S.Gore	Date:	29/04/2022

Description:

VERTICAL APPLICATION
SMOKE SHIELD DWFX-F IN
PLASTERBOARD WALL

Damper Size Range (mm)
200 x 200 to 1000 x 1000

Reference No:	Sheet	Rev
AAF10704	2 of 2	G