

# GLOBAL PX

Quick Guide

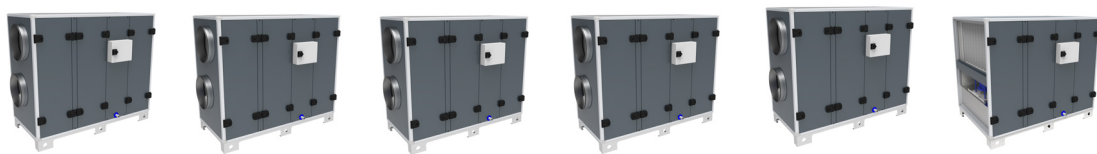


Overview

GLOBAL PX

Air handling units for small to  
medium airflows

- Standard equipment
- Accessory
- ✘ Not available

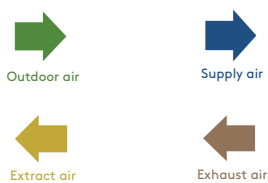


	GLOBAL PX 03	GLOBAL PX 05	GLOBAL PX 06	GLOBAL PX 08	GLOBAL PX 10	GLOBAL PX 12
--	--------------	--------------	--------------	--------------	--------------	--------------

Nominal air volume		1060 m <sup>3</sup> /h		1680 m <sup>3</sup> /h	1860 m <sup>3</sup> /h	2300 m <sup>3</sup> /h
		294 l/s		467 l/s	517 l/s	640 l/s
Pre filter G4		○		○	○	○
Replacement filter kit		510121		510121	510122	510124
Filter type		Bag		Bag	Bag	Bag
Filter Class Supply EN16890		ePM1 70%		ePM1 70%	ePM1 70%	ePM1 70%
Filter Class Extract EN16890		ePM10 50%		ePM10 50%	ePM10 50%	ePM10 50%
Free cooling		●		●	●	●
External post heating or cooling (Water/DX)		○		○	○	○
Internal post heater		○		○	○	○
Post heating capacity 21°C		3.7 kW		5.8 kW	6.5 kW	8.1 kW
Electrical coil nominal capacity		3.0 kW		6.0 kW	6.0 kW	9.0 kW
3x400V electrical coil current		4.3 A		8.7 A	10.8 A	13.0 A
3x230V electrical coil current		7.5 A		15.1 A	18.8 A	22.6 A
External dampers		○		○	○	○
Power connection		1 x 230 V		1 x 230 V	1 x 230 V	1 x 230 V
Maximum current without accessories (Composite fans)		5.3 A		5.3 A	4.9 A	7.7 A

Ecodesign LOT6	Fan motor	Variable speed	Variable speed	Variable speed	Variable speed	Variable speed
	Heat exchanger efficiency D.B. (EN 308)					
	Heat exchanger efficiency W.B.					
	Casing radiated sound power level (LWA) in dB(A)					

Weight without accessories		295 kg		330 kg	385 kg	380 kg
Standard duct connection (mm)		Ø 315		Ø 400	Ø 400	1069 x 547
Slip clamp duct connection (mm)		✘		✘	✘	1100 x 600
Circular adapter duct connection (mm)		✘		✘	✘	Ø 400
Unit size (L x W x H) Without slip clamp (H: 75mm)		1680 x 1465 x 610		1680 x 1465 x 815	1680 x 1465 x 995	1680 x 1465 x 1182



<b>Article number (CID)</b> right / left - Composite fan right / left - Aluminum fan		885500 / 885501		885502 / 885503	885504 / 885505	885506 / 885507
		885524 / 885525		885526 / 885527	885528 / 885529	885530 / 885531

**CONTROLS** : All units are equipped with the smart control system TAC5 with optional connectivity by BACNET, Modbus RTU, TCP IP over Ethernet, TCP IP over Wifi, KNX.

**HARDWARE** : All units have a casing in RAL 7016 and are insulated with 50mm Rockwool and can be delivered as left or right units. Operating temperatures are from -20°C to +50°C



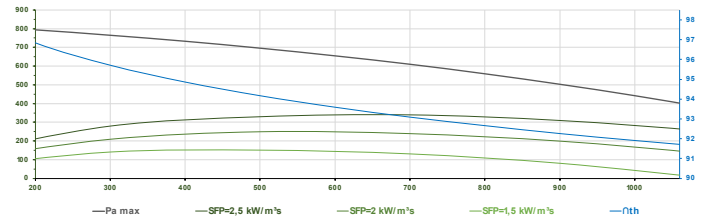
GLOBAL PX 13	GLOBAL PX 14	GLOBAL PX 16	GLOBAL PX 18	GLOBAL PX 20	GLOBAL PX 24	
2800 m³/h	3000 m³/h	3230 m³/h				Nominal air volume
778 l/s	833 l/s	897 l/s				
○	○	○				Pre filter G4
510124	510124	510136				Replacement filter kit
Bag	Bag	Bag				Filter type
ePM1 70%	ePM1 70%	ePM1 70%				Filter Class EN779 (supply/extract)
ePM10 50%	ePM10 50%	ePM10 50%				Filter Class EN16890 (supply/extract)
●	●	●				Free cooling
○	○	○				External post heating or cooling (Water/DX)
○	○	○				Internal post heater
9.7 kW	10.5 kW	11.4 kW				Post heating capacity 21°C
9.0 kW	9.0 kW	12.0 kW				Electrical coil nominal capacity
13.0 A	13.0 A	17.3 A				3x400V electrical coil current
22.6 A	22.6 A	30.1 A				3x230V electrical coil current
○	○	○				External dampers
1 x 230 V	1 x 230 V					Power connection
7.7 A	7.7 A	7.7 A				Maximum current without accessories (Composite fans)
Variable speed	Variable speed	Variable speed				Fan motor
						Heat exchanger efficiency D.B. (EN 308)
						Heat exchanger efficiency W.B.
						Casing radiated sound power level (LWA) in dB(A)
380 kg	425 kg	485 kg				Weight without accessories
1069 x 547	1269 x 547	1105 x 583				Standard duct connection (mm)
1100 x 600	1300 x 600	1600 x 600				Slip clamp duct connection (mm)
Ø 400	×	×				Circular adapter duct connection (mm)
1680 x 1465 x 1182	1680 x 1465 x 1382	1680 x 1465 x 1640				Unit size (L x W x H) Without slip clamp (H: 75mm)
885508/885509	885510/885511	885512/885513				<b>Article number (CID)</b> right/left - Premium efficiency right/left - Standard efficiency
885532/885533	885534/885535	885536/885537				

Ecodesign LOT6

# Selection guide - ERP2018 compliant operating range

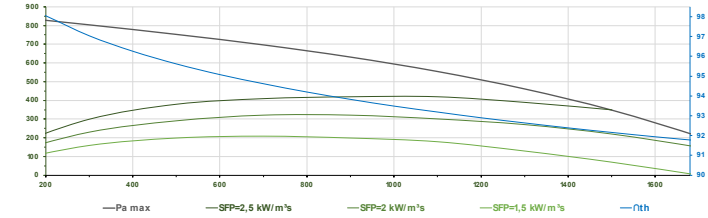
## GLOBAL PX 03

## GLOBAL PX 05



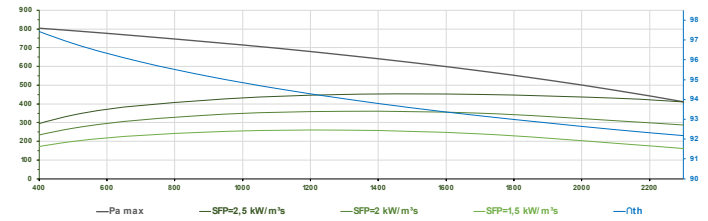
## GLOBAL PX 06

## GLOBAL PX 08



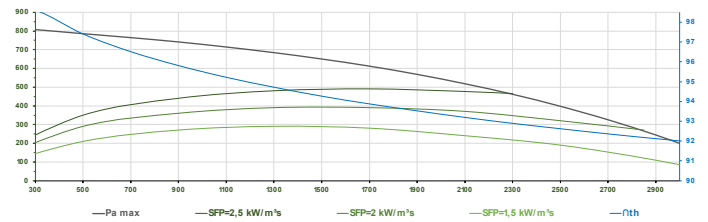
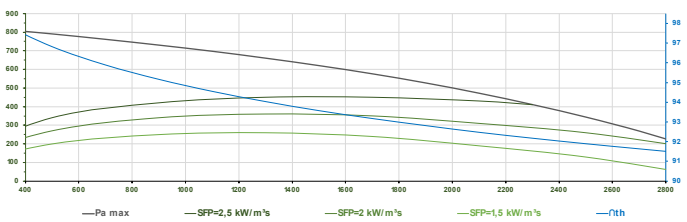
## GLOBAL PX 10

## GLOBAL PX 12



## GLOBAL PX 13

## GLOBAL PX 14



## GLOBAL PX 16

## GLOBAL PX 18

