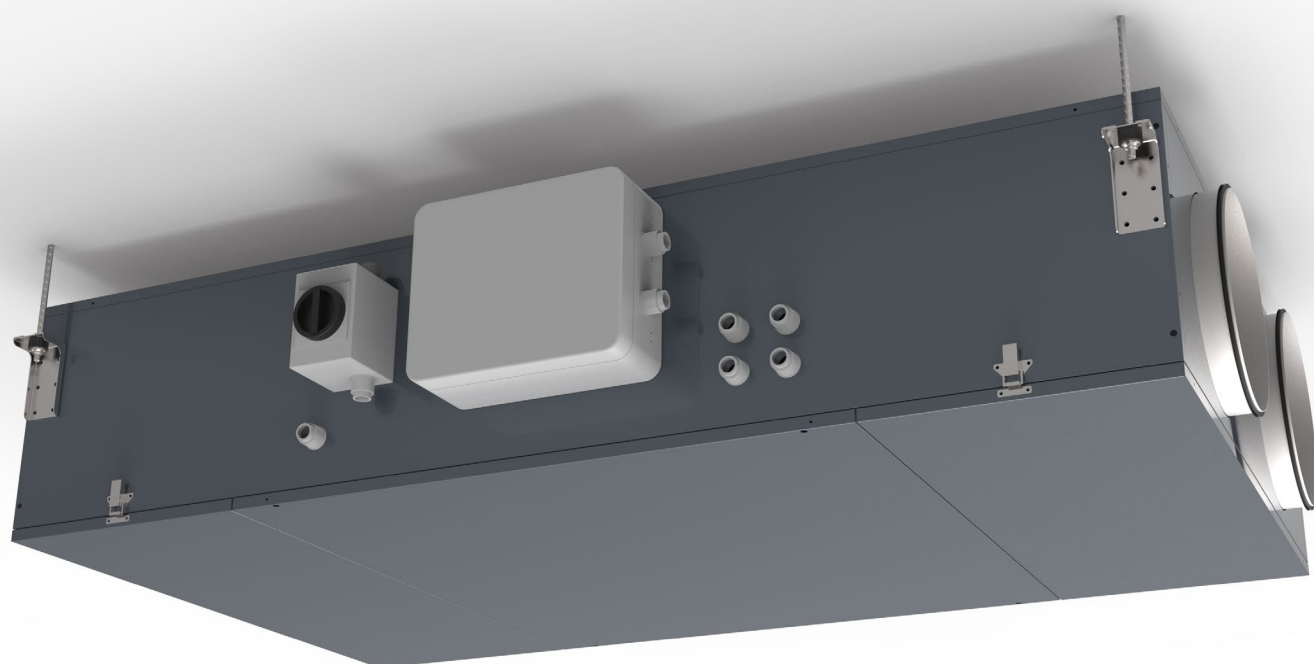


GLOBAL LP

Quick Guide



Overview

GLOBAL LP

Ceiling mounted

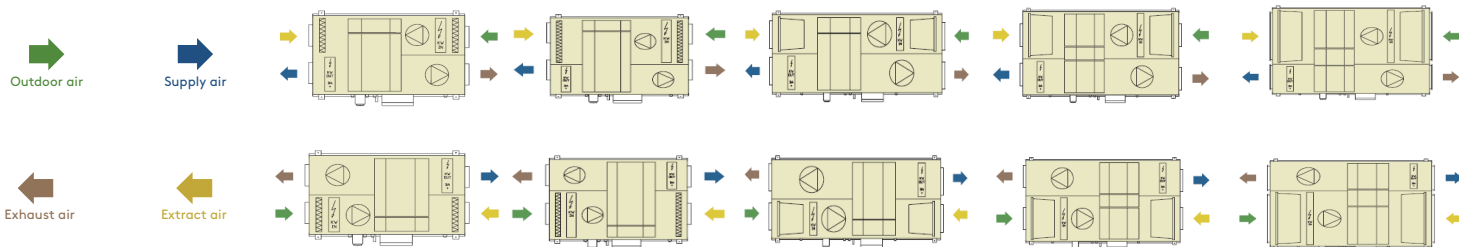
Air handling units for small to medium airflows

- Standard equipment
- Accessory
- ✕ Not available



	GLOBAL LP 02	GLOBAL LP 04	GLOBAL LP 06	GLOBAL LP 08	GLOBAL LP 10
Nominal air volume	100-580 m³/h	100-650 m³/h	200-1050 m³/h	200-1450 m³/h	250-1850 m³/h
	30-160 l/s	30-180 l/s	55-290 l/s	55-400 l/s	70-510 l/s
Pre filter G4	○	○	○	○	○
Filter Class (supply/extract)	M5/M5	M5/M5	F7/M5	F7/M5	F7/M5
Filter kit replacement article number	510134	510135	510129	510130	510131
Filter type	Minipleat	Minipleat	Bag	Bag	Bag
Supply air filter size (mm)	333 x 286 x 50	438 x 286 x 50	415 x 362 x 300	585 x 362 x 300	885 x 362 x 300
Extract air filter size (mm)	333 x 286 x 50	438 x 286 x 50	415 x 362 x 360	585 x 362 x 300	885 x 362 x 300
Free cooling	●	●	●	●	●
External post heating or cooling (Water/DX)	○	○	○	○	○
Internal post heater	○	○	○	○	○
Pre heating capacity 0°C	1,9 kW	2,2 kW	3,6 kW	4,9 kW	6,0 kW
Post heating capacity 21°C	0,9 kW	0,9 kW	1,4 kW	1,9 kW	2,77 kW
Electrical coil nominal capacity kW	3,0 kW	3,0 kW	4,5 kW	6,0 kW	6,0 kW
Electrical coil current (A)	13 A (1 x 230 V)	13 A (1 x 230 V)	6,5 A (3 x 400 V)	8,7 A (3 x 400 V)	8,7 A (3 x 400 V)
Power connection	1 x 230 V- 50 Hz	1 x 230 V- 50 Hz	1 x 230 V- 50 Hz	1 x 230 V- 50 Hz	1 x 230 V- 50 Hz
External dampers (accessories not factory mounted)	○	○	○	○	○
Recommended fuses	4 A/D-10000A-AC3	4 A/D-10000A-AC3	8 A/D-10000A-AC3	8 A/D-10000A-AC3	8 A/D-10000A-AC3
Maximum current without accessories	3,1	3,1	5,1	5,1	5,3
Fan motor	Variable speed drive	Variable speed drive	Variable speed drive	Variable speed drive	Variable speed drive
Heat exchanger efficiency D.B. (EN 308)	79%	79%	80%	80%	80%
Casing radiated sound power level (LWA) in dB(A)	TBC	TBC	TBC	TBC	TBC
Weight without accessories	105 kg	125 kg	195 kg	230 kg	270 kg
Standard duct connection Supply/Exhaust air (mm)	Ø200	Ø250	Ø315	Ø315	400 x 300
Standard duct connection Extract/Outdoor air (mm)	Ø200	Ø250	Ø315	Ø315	800 x 300
Unit size (L x W x H)	1300 x 740 x 350	1300 x 950 x 350	2100 x 900 x 435	2100 x 1150 x 435	2100 x 1450 x 435

Ecodesign LOT6



Article number (CID) right/left	886500/886501	886502/886503	886504/886505	886506/886507	886508/886509
--	----------------------	----------------------	----------------------	----------------------	----------------------

CONTROLS : All units are equipped with the smart control system TAC5 with optional connectivity by BACNET, Modbus RTU, TCP IP over Ethernet, TCP IP over Wifi, KNX.

HARDWARE : All units have a casing in RAL 7016 and are insulated with 50mm Rockwool and can be delivered as left or right units. Operating temperatures are from -20°C to +50°C



GLOBAL LP 12	GLOBAL LP 13	GLOBAL LP 14	GLOBAL LP 16
300-2200 m³/h	300-2600 m³/h	300-2900 m³/h	
80-610 l/s	80-720 l/s	80-800 l/s	
○	○	○	
F7/M5	F7/M5	F7/M5	
510132	510132	510133	
Bag	Bag	Bag	
882 x 438 x 300	882 x 438 x 300	1124 x 438 x 300	
882 x 438 x 300	882 x 438 x 300	1124 x 438 x 300	
●	●	●	
○	○	○	
○	○	○	
7,6 kW	8,8 kW	9,0 kW	
3,05 kW	4,21 kW	4,57 kW	
9,0 kW	9,0 kW	9,0 kW	
13 A (3 x 400 V)	13 A (3 x 400 V)	13 A (3 x 400 V)	
1 x 230 V- 50 Hz	1 x 230 V- 50 Hz	1 x 230 V- 50 Hz	
○	○	○	
10 A/D-10000A-AC3	10 A/D-10000A-AC3	10 A/D-10000A-AC3	
7,9	7,9	7,9	
VariableW speed drive	Variable speed drive	Variable speed drive	
81%	80%	81%	
TBC	TBC	TBC	
325 kg	325 kg	360 kg	
500 x 400	500 x 400	500 x 400	
800 x 400	800 x 400	1000 x 400	
2250 x 1550 x 510	2250 x 1550 x 510	2250 x 190 x 510	
8865018/886519	886510/886511	886512/886513	

AVAILABLE SOON

ACCESSORIES



MOTORIZED DAMPERS

Motorised dampers (on/off or spring return) can be mounted directly onto the unit.



INTERNAL HEATING COILS

Internal post or pre-heating coils (water or electrical) can be pre-installed inside of the units. Available in both 3x400V and 3x230V power supply.



TOUCHSCREEN INTERFACE

An intuitive touchscreen controller with extensive and complete commissioning menu.



NETWORK COMMUNICATION

Optional communication solutions are available for BACnet, Modbus, KNX and Wifi protocols.

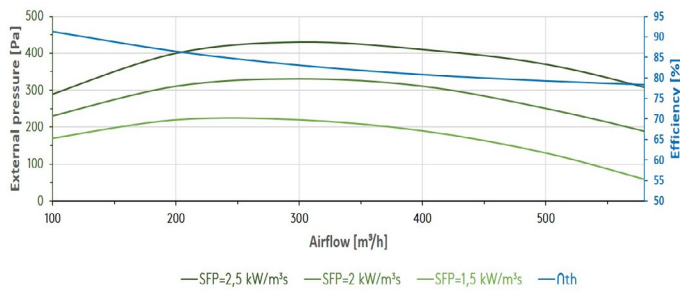


EC FANS

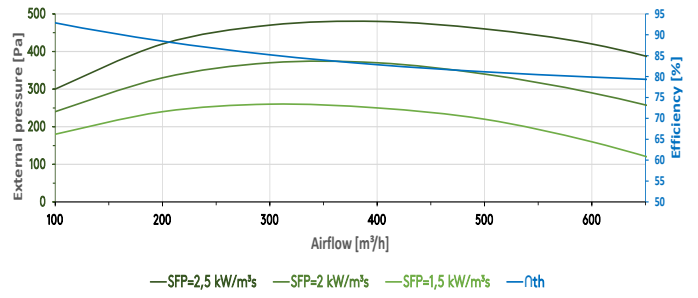
The EC fans are available in both an energy saving composite version as the traditional aluminum version

Selection guide - ERP2018 compliant operating range

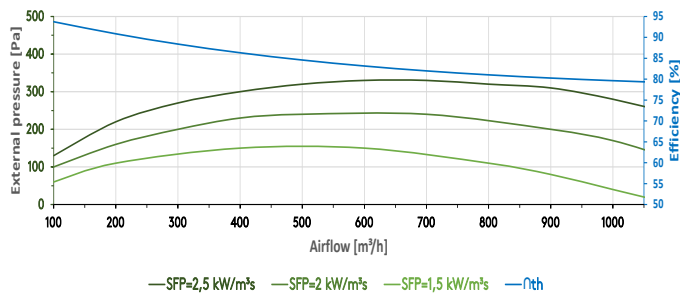
GLOBAL LP 02



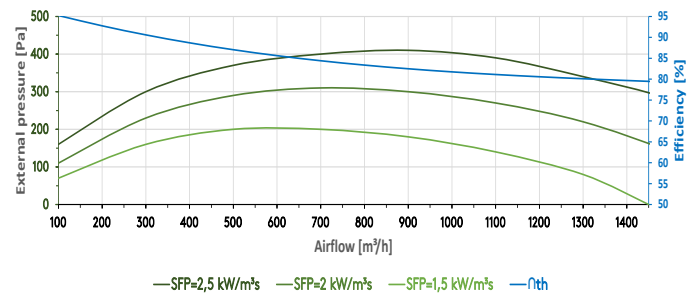
GLOBAL LP 04



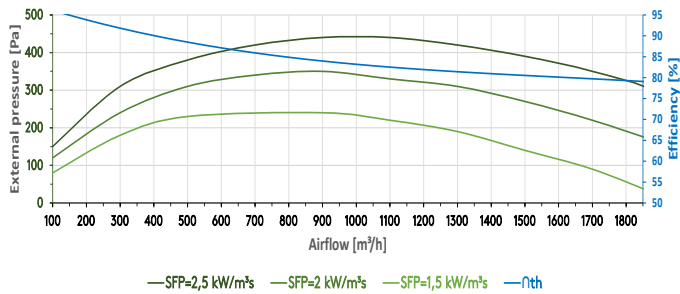
GLOBAL LP 06



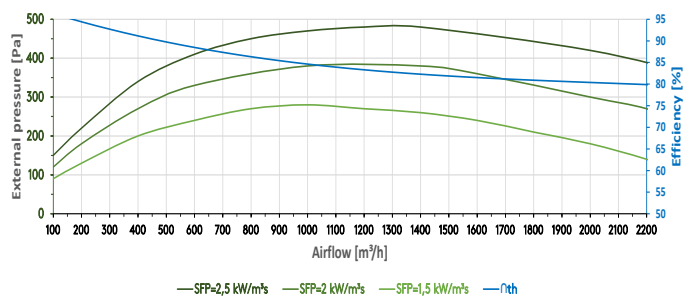
GLOBAL LP 08



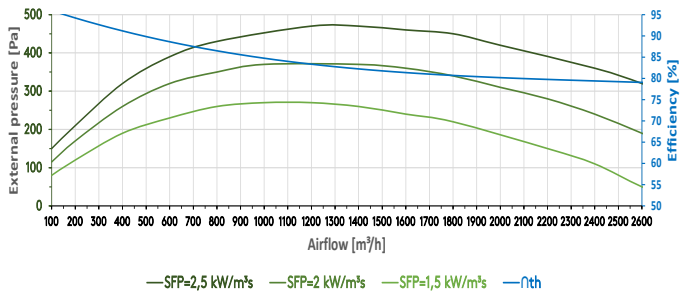
GLOBAL LP 10



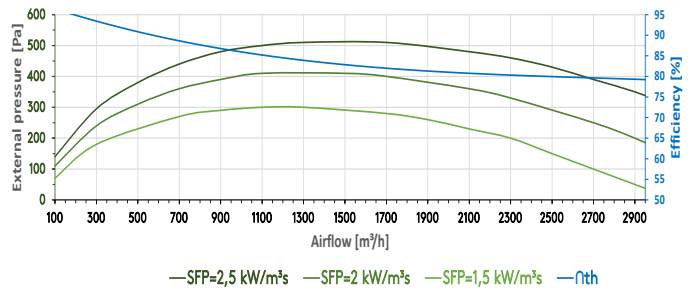
GLOBAL LP 12



GLOBAL LP 13



GLOBAL LP 14



GLOBAL LP 16 - AVAILABLE SOON